

FILED CMO
RECEIVED

JUL 9 1985

COUNTY SURVEYOR
DOUGLAS COUNTY, OREGON
CMO

SURVEY OF
SECTION 20, T20S, R7W, W.M.
DOUGLAS COUNTY, OREGON
FOR
INTERNATIONAL PAPER COMPANY
BY
ROBERTS SURVEYING INC.
29 WEST 29TH STREET
EUGENE, OREGON 97405
JUNE 8, 1985

"A" C.S. 1/16 CORNER SECTION 20
SET 2 1/2" x 30" ALUMINUM PIPE AND CAP
(PURPLE M.M. BURIED UNDER PIPE)
36" FIR STUMP, S71°E, 5.6' TO 5/8" PIN
42" FIR STUMP, N30°W, 40.2' TO 5/8" PIN

"E" C.E. 1/16 CORNER SECTION 20
SET 2 1/2" x 30" ALUMINUM PIPE AND CAP
(PURPLE M.M. BURIED UNDER PIPE)
OLSON'S 1" PIPE BEARS S5°38'45"W, 5.30'
52" FIR STUMP, S83°E, 24.0' TO 5/8" PIN
54" FIR STUMP, N44°W, 33.0' TO 5/8" PIN

NORTH 1/4 CORNER SECTION 20
FD. 1966 DOUGLAS COUNTY BRASS CAP
42" FIR STUMP, N50°W, 23.1' (SCAR VIS.), 1891 B.T.
58" FIR STUMP, S32°E, 19.1' (NO MARKS), 1891 B.T.
24" FIR STUMP, S38°W, 40.3' (SCRIBE VIS.), 1966 C.S.B.T.
36" FIR STUMP, N09°W, 44.1' (SCRIBE VIS.), 1966 C.S.B.T.

N.E. CORNER SECTION 20
FD. 1966 DOUGLAS COUNTY BRASS CAP
50" FIR SNAG, N10°E, 27.0' (SCAR VIS.), 1891 B.T.
10" FIR SNAG, N08°E, 9.3' (SCRIBE VIS.), 1966 C.S.B.T.
36" FIR STUMP, S38°E, 38.3' (SCRIBE VIS.), 1983 B.T.

"B" CENTER 1/4 CORNER SECTION 20
SET 2 1/2" x 30" ALUMINUM PIPE AND CAP
(PURPLE M.M. BURIED UNDER PIPE)
6" FIR, S52°W, 12.9' (SCRIBED/PAINTED RED)
8" FIR, N52°W, 17.1' (SCRIBED/PAINTED RED)

"F" S.E. 1/16 CORNER SECTION 20
SET 2 1/2" BRASS CAP IN ROCK FACE
OLSON'S 1" PIPE BEARS S7°13'30"E, 3.17'
15" FIR, S30°E, 18.8' (SCRIBED/PAINTED RED)
38" FIR STUMP, S65°W, 24.0' TO 5/8" PIN

"C" C.N. 1/16 CORNER SECTION 20
SET 2 1/2" x 30" ALUMINUM PIPE AND CAP
(PURPLE M.M. BURIED UNDER PIPE)
OLSON'S 1" PIPE BEARS S12°22'45"W, 2.61'
6" FIR, N25°E, 10.2' (SCRIBED/PAINTED RED)
7" FIR, S41°W, 12.2' (SCRIBED/PAINTED RED)

"G" SOUTH 1/16 CORNER SECTION 20
SET 2 1/2" x 30" ALUMINUM PIPE AND CAP
(PURPLE M.M. BURIED UNDER PIPE)
OLSON'S 1" PIPE BEARS S0°57'15"E, 1.44'
6" FIR, S79°E, 29.7' (SCRIBED/PAINTED RED)
6" FIR, N18°E, 70.9' (SCRIBED/PAINTED RED)

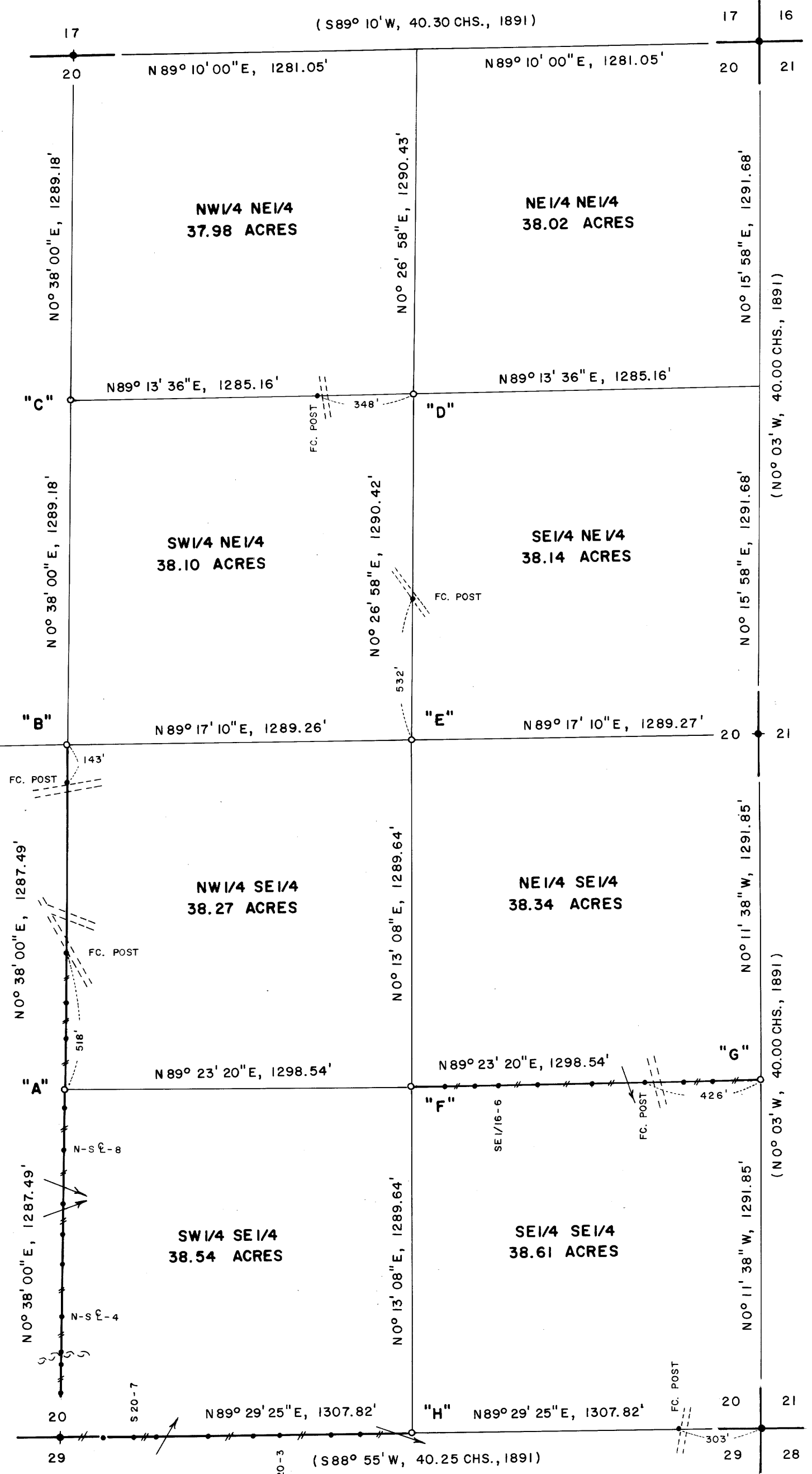
"D" N.E. 1/16 CORNER SECTION 20
SET 2 1/2" x 30" ALUMINUM PIPE AND CAP
(PURPLE M.M. BURIED UNDER PIPE)
OLSON'S 1" PIPE BEARS S9°14'15"E, 5.50'
26" FIR STUMP, S83°W, 5.0' TO 5/8" PIN
32" FIR STUMP, N08°W, 13.2' TO 5/8" PIN

"H" EAST 1/16 CORNER SECTION 20
SET 2 1/2" x 30" ALUMINUM PIPE AND CAP
(PURPLE M.M. BURIED UNDER PIPE)
11" HEMLOCK, S12°W, 39.7' (SCRIBED/PAINTED)
36" FIR, N27°E, 42.1' (SCRIBED/PAINTED)

WEST 1/4 CORNER SECTION 20
FD. 1960 G.L.O. BRASS CAP
36" FIR STUMP, N73°W, 31.4' (SCRIBE VIS.), 1966 C.S.B.T.
SET 6" FIR, S87°E, 24.1' (SCRIBED/PAINTED RED)

NARRATIVE

I, LES ROBERTS, REGISTERED PROFESSIONAL LAND SURVEYOR DO CERTIFY THAT I HAVE CORRECTLY SURVEYED SECTION 20 IN ACCORDANCE TO THE MANUAL OF INSTRUCTIONS FOR THE SURVEY OF THE PUBLIC LANDS OF THE UNITED STATES. THE CENTER 1/4 CORNER WAS SET AT THE INTERSECTION OF THE N-S AND E-W CENTERLINES OF SECTION 20. THE SOUTH 1/16 CORNER BETWEEN SECTIONS 20 AND 21 AND THE EAST 1/16 CORNER BETWEEN SECTIONS 20 AND 29 WERE SET HALFWAY BETWEEN THE S.E. CORNER OF SECTION 20 AND THE EAST 1/4 CORNER AND THE SOUTH 1/4 CORNER OF SECTION 20 RESPECTIVELY. THE C.S. 1/16 CORNER AND THE C.E. 1/16 CORNER WERE SET HALFWAY BETWEEN THE CENTER 1/4 CORNER AND THE SOUTH 1/4 & EAST 1/4 CORNERS OF SECTION 20 RESPECTIVELY. THE C.N. 1/16 CORNER WAS SET HALFWAY BETWEEN THE CENTER 1/4 CORNER AND THE NORTH 1/4 CORNER OF SECTION 20. THE N.E. 1/16 CORNER AND THE S.E. 1/16 CORNER WERE SET AT THE INTERSECTION OF THE N-S AND E-W CENTERLINES OF THE N.E. 1/4 AND OF THE S.E. 1/4 RESPECTIVELY. A CLOSED MEANDER TRANSIT AND E.D.M. TRAVERSE WAS RUN BETWEEN ALL FOUND CORNERS AND USED FOR CONTROL. A CLOSED MEANDER TRANSIT AND E.D.M. TRAVERSE WAS RUN ALONG THE PROPERTY LINES TO BE BLAZED AND POSTED. OFFSETS WERE COMPUTED FROM THIS MEANDER TRAVERSE TO THE TRUE PROPERTY LINE. PROPERTY LINES WERE MARKED WITH RED PAINTED BLAZES, RED RIBBON, YELLOW INTERNATIONAL PAPER PROPERTY LINE SIGNS, FLUORESCENT ORANGE MAGNETIC MARKERS AND 1/2" x 60" IRON REBAR WITH ALUMINUM CAPS, LOCATED AS SHOWN. IRON REBAR AND BURIED MAGNETIC MARKERS ARE REFERENCED BY A 3" x 3" ALUMINUM TAG NAILED TO A NEARBY TREE. TAG NOTES BEARING AND DISTANCE FROM TREE TO IRON ROD OR BURIED MAGNETIC MARKER. METAL FENCE POSTS WERE PLACED AT ALL INTERNATIONAL PAPER PROPERTY LINE ROAD X-INGS AS SHOWN. 1" IRON PIPES SET BY LEON OLSON IN C.S. NO. 54-37 WERE TIED AS NOTED.



LEGEND

- CORNERS FOUND AND USED FOR CONTROL
- o CORNERS SET, 2 1/2" x 30" ALUMINUM PIPE & CAP. CAP STAMPED S-T-R, DATE AND P.L.S. NO. 1039
- LINES MARKED AND BLAZED THIS SURVEY
- () DATA OF RECORD, 1891 G.L.O. SURVEY
- BASIS OF BEARING, EAST 1/2 OF NORTH LINE FROM 1891 G.L.O. SURVEY
- DISTANCE TO B.T.'S ARE CENTER MEASURE
- (M.M.) INDICATES LOCATION OF BURIED MAGNETIC MARKERS. MARKERS ARE FLUORESCENT ORANGE IN COLOR AND ARE BURIED, 12" TO 18" DEEP, ALONG LINE AS SHOWN.
- ALL NEW B.T.'S ARE SCRIBED AND HAVE AN ALUMINUM WASHER STAMPED "P.L.S. 1039" NAILED TO LOWER BLAZE. SCRIBED BLAZES ARE PAINTED RED.
- ALL NEW B.T.'S HAVE A 6" STEEL SPIKE DRIVEN INTO THE CENTER OF THE TREE TO SERVE AS A CHAINING POINT FOR MEASURED DISTANCES.
- SCALE 1" = 400'

LOCATION OF MAGNETIC MARKERS		
S1/16 COR.	0'	WEST (M.M. & FC. POST)
SE1/16-1	176'	WEST (M.M.)
SE1/16-2	278'	WEST (M.M. & REBAR)
SE1/16-3	426'	WEST (M.M. & FC. POST)
SE1/16-4	627'	WEST (M.M.)
SE1/16-5	830'	WEST (M.M. & REBAR)
SE1/16-6	978'	WEST (M.M.)
SE1/16-7	1062'	WEST (M.M. & REBAR)
SE1/16-8	1182'	WEST (M.M.)
SE1/16 COR.	1299'	WEST (FC. POST)

REGISTERED PROFESSIONAL LAND SURVEYOR
Les Roberts
L. D. ROBERTS
1985

SOUTH 1/4 CORNER SECTION 20
FD. "T" IRON SET IN C.S. M20-38, DATED 1961
26" FIR, N25°W, 21.0' (SCAR VIS.), 1961 B.T.
35" FIR, S34°W, 32.0' (SCAR VIS.), 1961 B.T.
SET 2 1/2" x 30" ALUMINUM PIPE AND CAP
(PURPLE M.M. BURIED UNDER PIPE)

S.E. CORNER SECTION 20
FD. 1968 DOUGLAS COUNTY BRASS CAP & "T" IRON
26" CEDAR SNAG, N17°W, 61.2' (NO MARKS), 1961 B.T.
18" DOWNED FIR, S86°W, 95.0' (SCRIBE VIS.), 1966 C.S.B.T.
24" HEMLOCK STUMP, N81°W, 64.9' TO 5/8" ROD, 1966 C.S.B.T.
72" FIR STUMP, S87°E, 121.0' TO 5/8" ROD, 1968 C.S.B.T.

COUNTY SURVEYORS FILE DATA
DO NOT REMOVE FROM OFFICE

EAST 1/4 CORNER SECTION 20
FD. 1966 DOUGLAS COUNTY BRASS CAP
56" FIR STUMP, N78°E, 25.1' TO 5/8" ROD, 1968 C.S.B.T.
60" FIR STUMP, N77°W, 56.6' TO 5/8" ROD, 1968 C.S.B.T.

LOCATION OF MAGNETIC MARKERS		
E1/16 COR.	0'	WEST (M.M. & FC. POST)
S20-1	188'	WEST (M.M.)
S20-2	300'	WEST (M.M. & REBAR)
S20-3	490'	WEST (M.M.)
S20-4	591'	WEST (M.M. & REBAR)
S20-5	755'	WEST (M.M.)
S20-6	950'	WEST (M.M. & REBAR)
S20-7	1029'	WEST (M.M.)
S20-8	1143'	WEST (M.M.)
S1/4 COR.	1308'	WEST (M.M. & FC. POST)
N-S E-1	163'	NORTH (M.M.)
N-S E-2	270'	NORTH (M.M.)
N-S E-3	310'	NORTH (M.M. & REBAR)
N-S E-4	450'	NORTH (M.M.)
N-S E-5	648'	NORTH (M.M. & REBAR)
N-S E-6	756'	NORTH (M.M.)
N-S E-7	871'	NORTH (M.M. & REBAR)
N-S E-8	1072'	NORTH (M.M. & REBAR)
N-S E-9	1230'	NORTH (M.M.)
C.S. 1/16	1287'	NORTH (M.M. & FC. POST)
N-S E-11	1485'	NORTH (M.M.)
N-S E-12	1622'	NORTH (M.M. & REBAR)
N-S E-13	1805'	NORTH (FC. POST)
N-S E-15	2432'	NORTH (FC. POST)
C1/4 COR.	2575'	NORTH (M.M. & FC. POST)

C.S. File 63/118
Map File M-99-7