

FILED CMO
RECEIVED *fl*
OCT 21 1985

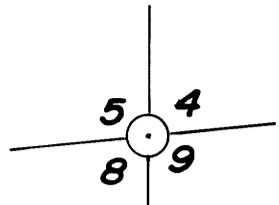
COUNTY SURVEYOR
DOUGLAS COUNTY, ORE
CMO

MAP FILE M.22-4.3



SECTION CORNER 4, 5, 8, 9

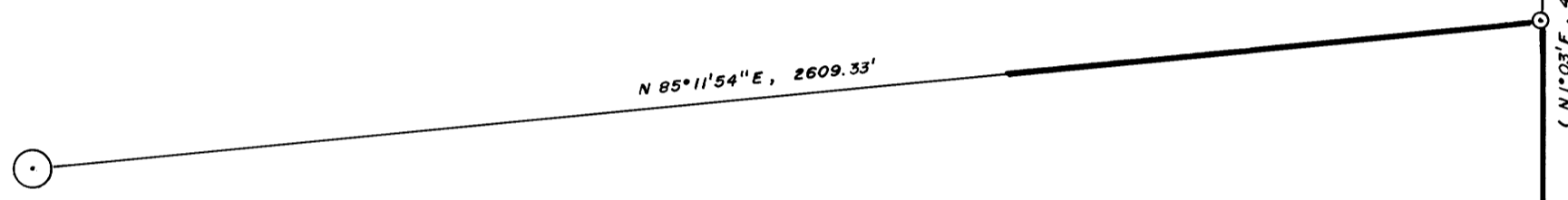
FOUND: 2-1/2" IRON PIPE WITH B.L.M. BRASS CAP "1959"
36" FIR STUMP, N15-3/4E, 26.9' (DIST. TO "W" NAIL)
33" FIR STUMP, N43-1/4E, 43.1' (CTR. MEASURE)
20" FIR, S42-1/2E, 37.1' (DIST. TO "W" NAIL)
30" FIR, S19-3/4E, 36.8' (CTR. MEASURE)
15" FIR, S8-1/2W, 12.2' (DIST. TO "W" NAIL)
13" FIR, S57W, 23.1' (CTR. MEASURE)
24" FIR, N82-3/4W, 42.6' (CTR. MEASURE)



N 1/16 CORNER 8 & 9

SET: 5/8" X 36" REBAR WITH YELLOW PLASTIC
CAP MARKED "BAKER 1978"
14" CEDAR, S70E, 34.5' (SCRIBED N1/16 S9 BT)
20" HEMLOCK, S46-1/2W, 15.6' (SCRIBED N1/16 S8 BT)

NOTE: DISTANCES TO "W" NAIL IN LOWER BLAZE

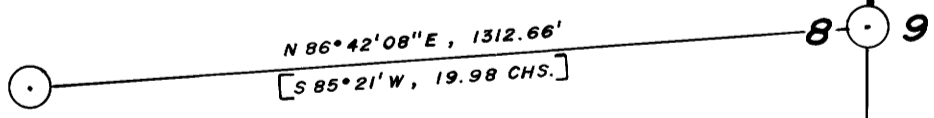


CN 1/16 CORNER SECTION 8

FOUND: 5/8" IRON ROD (C.S. FILE NO. M56-17)
24" CEDAR STUMP, N86-1/2E, 30.9' (DIST. TO "W" NAIL)
10" HEMLOCK STUMP, S31E, 39.7' (DIST. TO "W" NAIL)
46" FIR STUMP, S39E, 19.2' (DIST. TO "W" NAIL)

CE 1/16 CORNER SECTION 8

FOUND: 5/8" REBAR
24" FIR, N46-3/4E, 11.7' (DIST. TO "W" NAIL)
34" FIR STUMP, N25-3/4W, 38.6' (DIST. TO "W" NAIL)



1/4 CORNER 8 & 9

FOUND: 2-1/2" IRON PIPE WITH B.L.M. BRASS CAP "1959"
11" FIR, N75E, 18.5' (CLOSED FACE)
22" FIR, N70W, 29.3' (CLOSED FACE)

— NARRATIVE —

THIS SURVEY WAS MADE IN SEPTEMBER AND OCTOBER, 1985 BY DANIEL W. BAKER OF PEEL BAKER LAND SURVEYING INC., 1262 LAWRENCE - SUITE 4, EUGENE, OREGON. THE PURPOSE OF THIS SURVEY WAS TO ESTABLISH THE NORTH 1/16 CORNER BETWEEN SECTIONS 8 & 9, T26S, R2W, W.M. AND TO BLAZE THE LINE BETWEEN SAID 1/16 CORNER AND THE EAST 1/4 CORNER OF SECTION 8. A KERN K1M THEODOLITE AND DM 502 E.D.M. WERE USED TO PERFORM THIS SURVEY. A RANDOM TRANSIT TRAVERSE, WITH A MINIMUM ERROR OF CLOSURE OF 1/15,000', WAS RUN BETWEEN FOUND CORNERS FOR CONTROL. BEARINGS WERE BASED ON THE EAST LINE OF SECTION 8 AS ESTABLISHED IN 1959 B.L.M. SURVEY. OFFSETS FROM THE RANDOM LINE TO THE TRUE PROPERTY LINE WERE CALCULATED AND USED TO DETERMINE THE POSITION OF THE TRUE LINE. THE TRUE PROPERTY LINE WAS MARKED IN THE FIELD BY BLAZING TREES (BLAZES NOTCHED AND PAINTED RED) ON BOTH SIDES OF THE TRUE LINE. THE NORTH 1/16 CORNER 8 & 9 WAS SET AT MIDPOINT BETWEEN 1/4 CORNER 8 & 9 AND SECTION CORNER 4, 5, 8, 9 AND MONUMENTED BY A 5/8" X 36" REBAR WITH YELLOW PLASTIC CAP MARKED "BAKER 1978". THE EASTERLY 925 FT. OF THE EAST - WEST CENTERLINE OF THE NE 1/4 WAS ALSO BLAZED AND PAINTED.

BASIS OF BEARING: EAST LINE OF SECTION 8 AS ESTABLISHED IN 1959 B.L.M. SURVEY

SCALE: 1" = 300'

FOR ALL BEARING TREES SET IN THIS SURVEY, DISTANCES WERE MEASURED TO A "W" NAIL DRIVEN IN LOWER BLAZE, BEARINGS ARE MAGNETIC, VAR. 20°

- CORNERS FOUND
- CORNER SET THIS SURVEY
- LINE MARKED WITH NOTCHED BLAZES (PAINTED RED)
- () RECORD DATA, B.L.M. 1959
- [] RECORD DATA C.S. FILE NO. 51 / 86

Daniel W. Baker
DANIEL W. BAKER
REGISTERED PROFESSIONAL SURVEYOR
NOV 1985

**SURVEY IN
NE 1/4 SEC. 8, T26S, R2W, W.M.
DOUGLAS COUNTY, OREGON**

FOR
WEYERHAEUSER COMPANY
BY
PEEL BAKER LAND SURVEYING INC.
OCTOBER 10, 1985

COUNTY SURVEYORS FILE DATA
DO NOT REMOVE FROM OFFICE

MAP FILE M.22-4.3