

FILED *CMO*
RECEIVED *SL*

081 2 1985

COUNTY SURVEYOR
DOUGLAS COUNTY, ORE.
CMO

BOUNDARY LINE ADJUSTMENT
SURVEY

NW 1/4 SEC. 9 T 27 S R 6 W, WM

SURVEY FOR BLAKE CONN

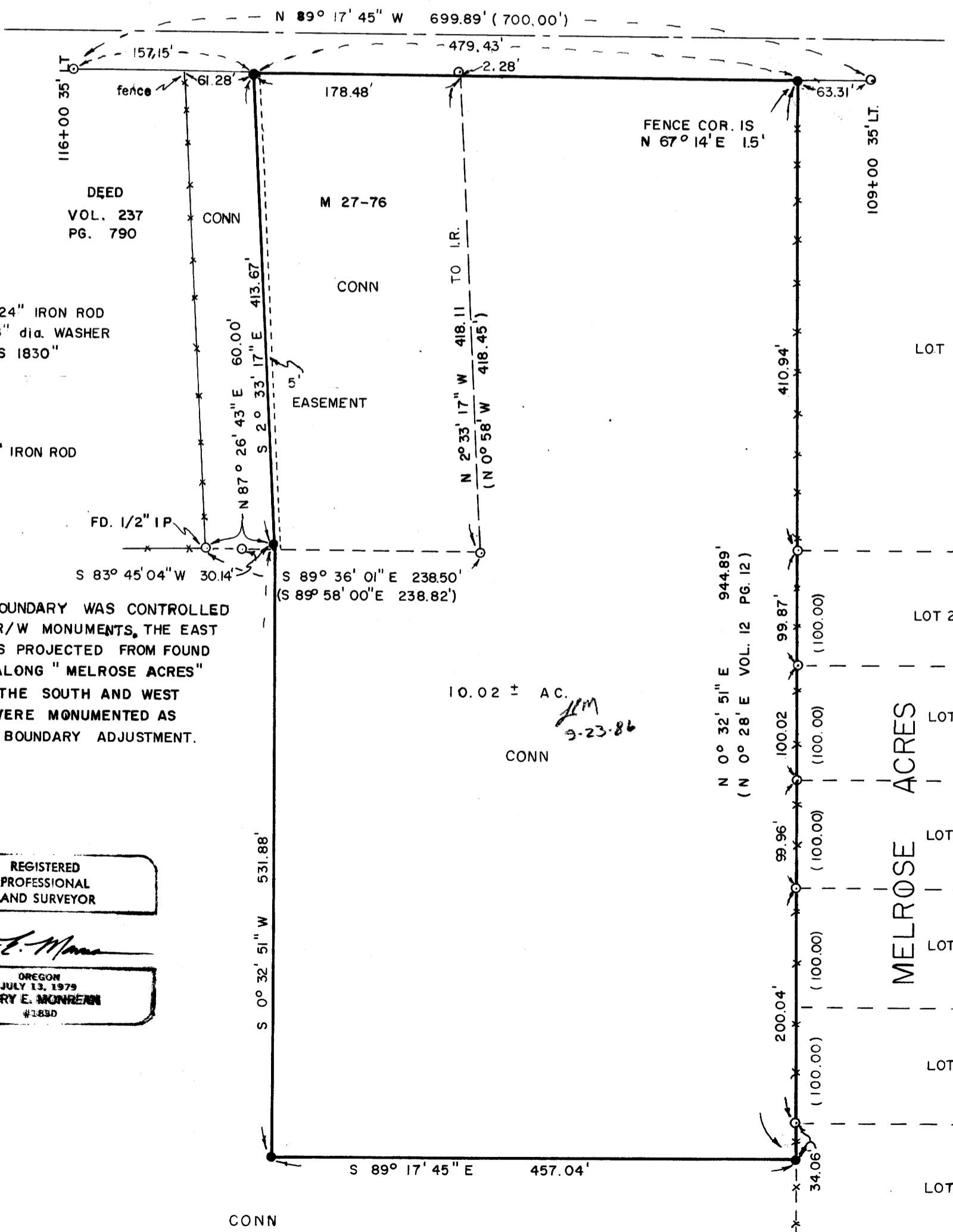
AUGUST 18, 1985

SURVEY BY LARRY E. MONREAN LS 1830
1422 SE COURT ST.
ROSEBURG, OR. 97470

SCALE 1" = 100'



BASE BEARING CO. RD. NO. 13 70' R/W



LEGEND

● SET 1/2" X 24" IRON ROD
WITH 1 3/8" dia. WASHER
MARKED "LS 1830"

○ FOUND 5/8" IRON ROD

NARRATIVE

THE NORTH BOUNDARY WAS CONTROLLED
BY COUNTY R/W MONUMENTS, THE EAST
BOUNDARY WAS PROJECTED FROM FOUND
MONUMENTS ALONG "MELROSE ACRES"
SUBDIVISION. THE SOUTH AND WEST
BOUNDARIES WERE MONUMENTED AS
NEEDED FOR BOUNDARY ADJUSTMENT.

REGISTERED
PROFESSIONAL
LAND SURVEYOR

Larry E. Monrean

OREGON
JULY 13, 1979
LARRY E. MONREAN
#1830

10.02 ± AC.
LM
9-23-86
CONN

