

Resurvey And Subdivision of Section 20, T31S, R3W, W. M., Oregon

For Roseburg Lumber Company

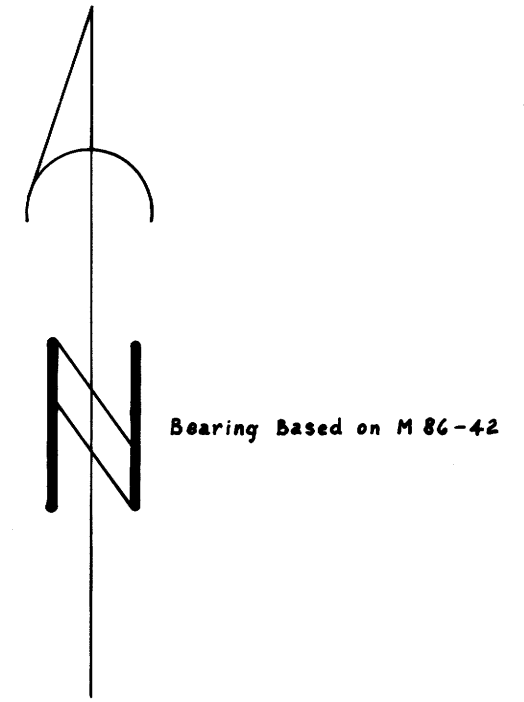
Scale: 1" = 400'

August 23, 1985

FILED ^{CMO}
RECEIVED

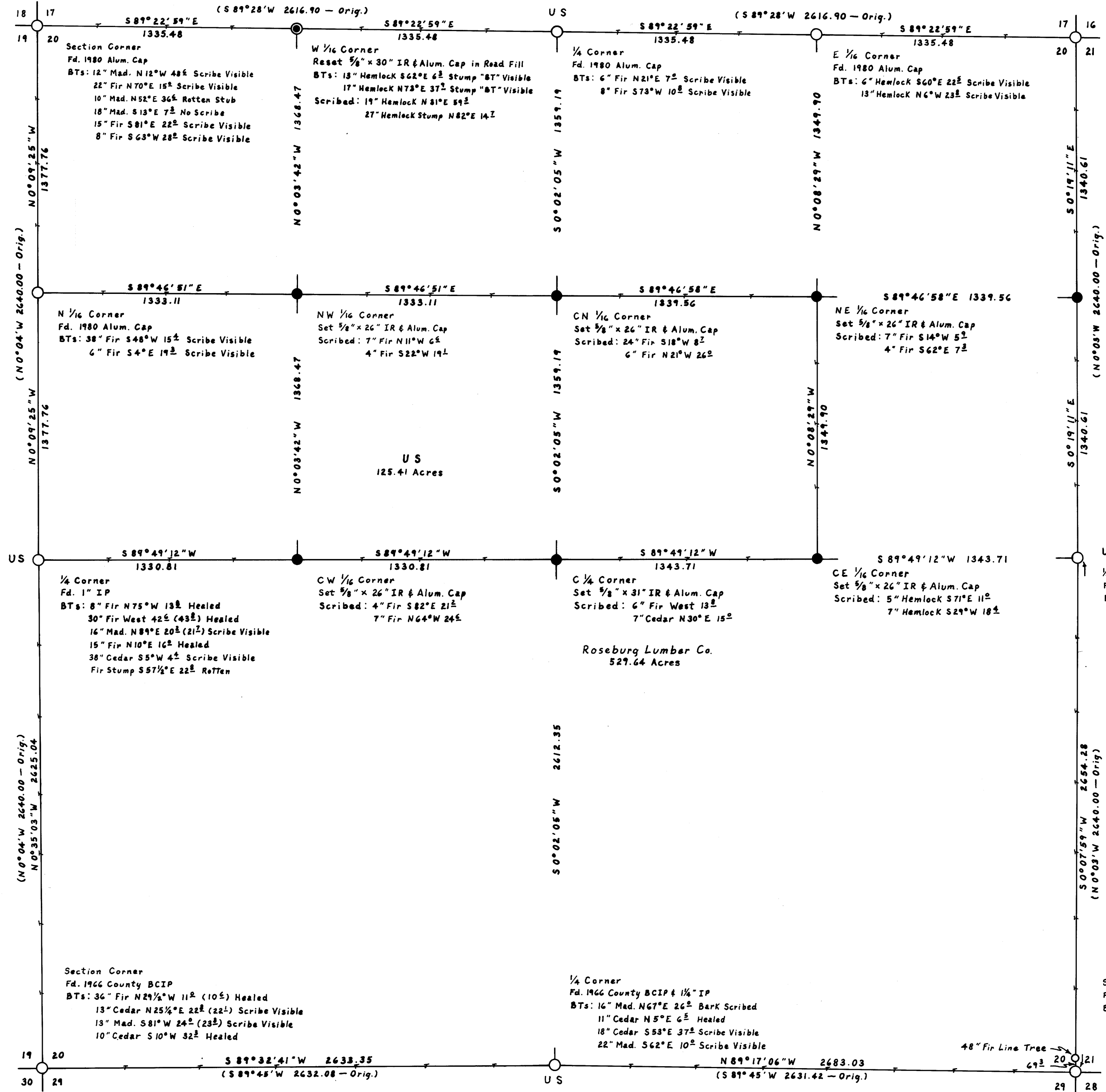
SEP 11 1985

COUNTY SURVEYOR
DOUGLAS COUNTY, ORE.
CMO



Legend

- Found Monument as Noted
- Set 3/8" IR & Alum. Cap Marked "LS 498"
- Reset Monument as Noted
- Section or Subdivision Line
- Line Referenced to Alum. Tags
- Record Data



I ran a closed traverse in Section 20 using a Nikon NTD-4 total station. I achieved a precision of 1:64,680 and adjusted the traverse by the Crandall method. I set the corners by standard subdivision procedure based on the location of the existing monuments.

Howard W. Johnstone
P.O. Box 1088
Roseburg, Oregon

REGISTERED
PROFESSIONAL
LAND SURVEYOR

Howard W. Johnstone

OREGON
MAY 13, 1980
HOWARD W. JOHNSTONE
498

MAP FILE M. 22-36

M. 22-36