

**MENASHA CORPORATION**

IN  
SEC. 27 T22S. R12W W.M.

DATE: 7/26/85

DRAWN BY: MARK HOYE

SURVEY BY: DAVID KLAUSMAN

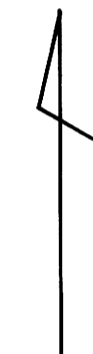
MENASHA CORPORATION

P.O. BOX 588

NORTH BEND, OREGON

LEGEND

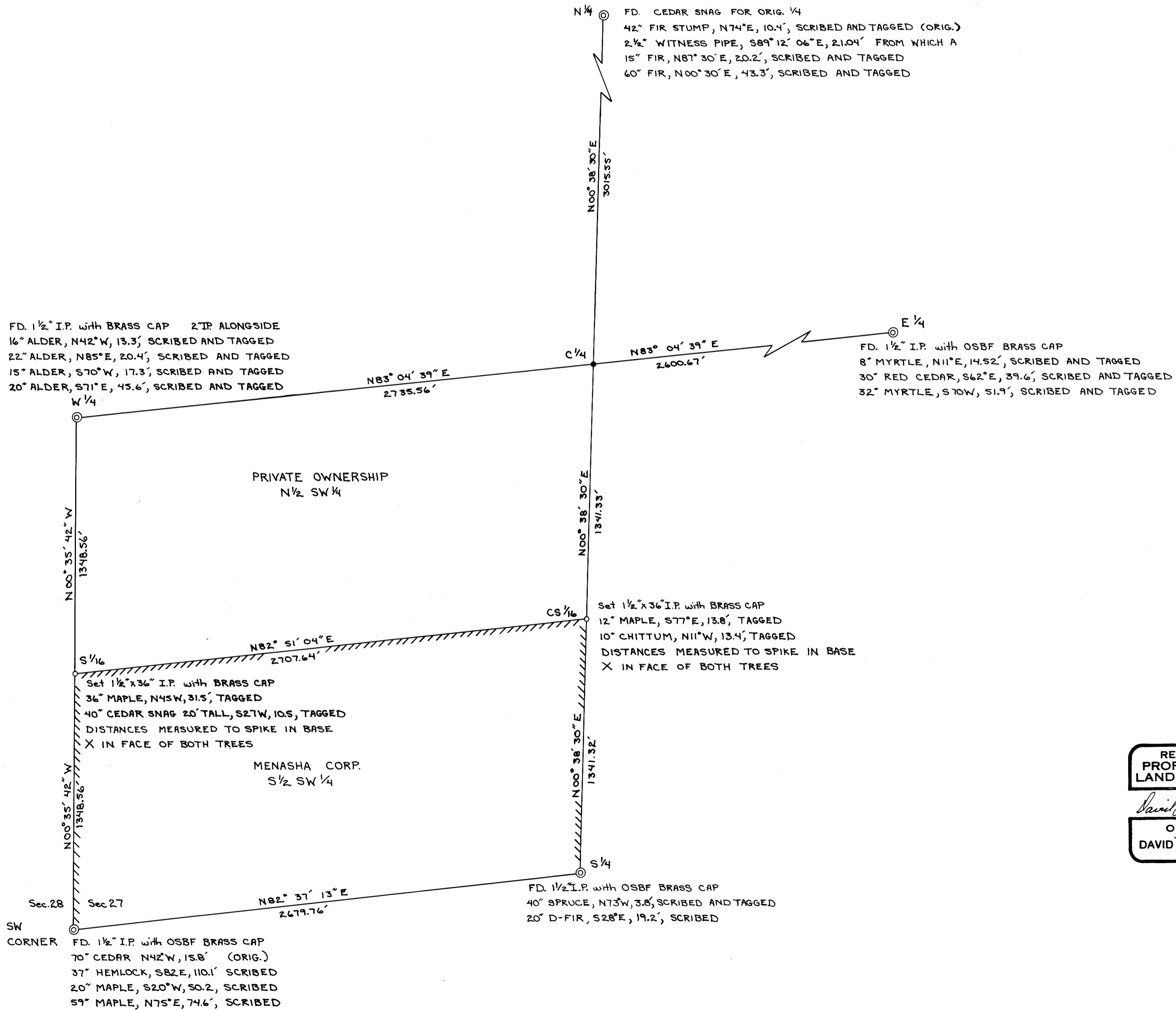
- ⊙ CORNERS FOUND
- CORNERS SET
- CORNERS CALCULATED
- LINES TRAVERSED
- //// LINES PAINTED + BLAZED



SCALE: 1"=400'

BASIS OF BEARING IS A SOLAR  
OBSERVATION TAKEN 7/10/85

FOR CORNER INFORMATION AND  
SURVEY REFERENCES, SEE THE  
ACCOMPANYING NARRATIVE



REGISTERED  
PROFESSIONAL  
LAND SURVEYOR

*David L. Klausman*

OREGON  
JULY 16, 1980  
DAVID L. KLAUSMAN  
2017

CS File 63/23 (4)  
Map File M99-22

CS File 63/23 (4)  
Map File M99-22

M 99-29



# MENASHA CORPORATION

FOREST PRODUCTS GROUP LAND & TIMBER DIVISION

FILED

RECEIVED

AUG 21 1985

July 26, 1985

Douglas County Surveyor  
Douglas County Courthouse  
Roseburg, Oregon

COUNTY SURVEYOR  
DOUGLAS COUNTY, ORE.

Dear Sir:

This survey was conducted for the purpose of establishing property lines in Section 27, T22S-R12W, W.M., Douglas County, Oregon. Refer to plat dated July 26, 1985.

This survey was started in May, 1985, and was completed in July, 1985. A Pentax 10-D total station was used to establish property lines and corner positions. Basis of bearing was a solar observation taken on July 10, 1985.

Survey References used were:

G.L.O. William Thiel	1889, Subdivisions
Warren Hootman	1959, C.S. File No. 51/61
Arnold Gibson	1969, C.S. File No. 55/101
Arnold Gibson	1972, Map File M42-76
John Powell	1973, C.S. File No. 56/25
Karen Reed	1980, C.S. File No. 61/6
Robert Ward	1981, Map File M92-58
Karen Reed	1982, C.S. File No. 62/1

I began this survey at the SW section corner of Section 27, Township 22S Range 12W where I found:



1 1/2" iron pipe with OSBF brass cap and the following bearing trees;

- 70" Cedar, N42°W, 15.8', (Orig.)
- 37" Hemlock, S82°E, 110.1, scribed
- 20" Maple, S20°W, 50.2', scribed
- 59" Maple, N75°E, 74.6', scribed

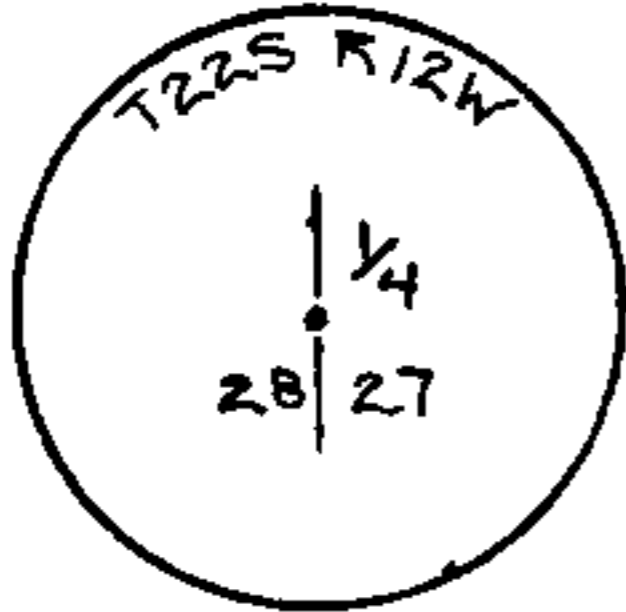
Map Ref. 288

FILED  
RECEIVED *JS*  
AUG 21 1985

Douglas County Surveyor  
July 26, 1985  
Page Two

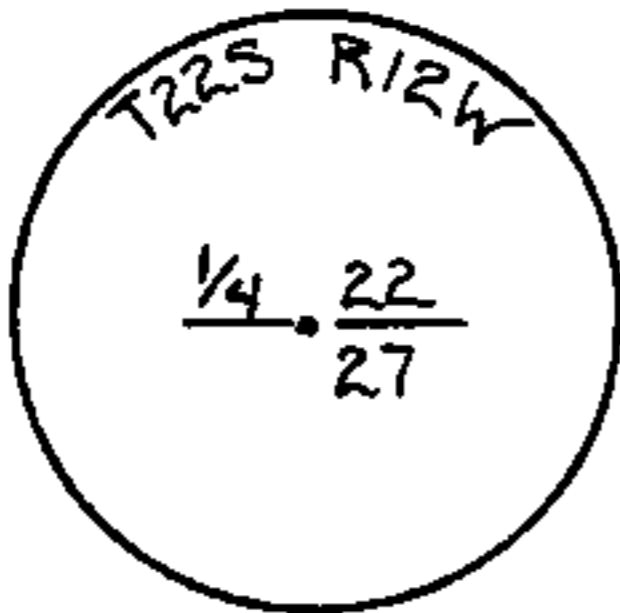
COUNTY SURVEYOR  
DOUGLAS COUNTY, ORE.

Thence on random line I traversed to the W 1/4 of Section 27 where I found:



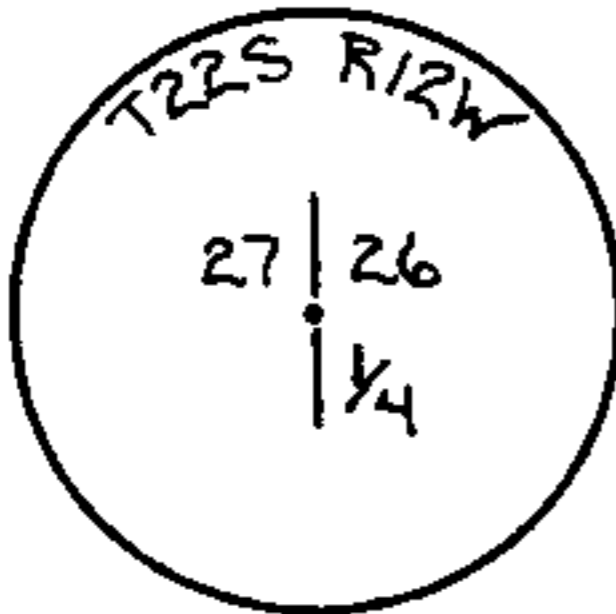
1 1/2" iron pipe with OSBF brass cap and the following bearing trees;  
16" Alder, N42°W, 13.3', scribed and tagged  
22" Alder, N85°E, 20.4', scribed and tagged  
15" Alder, S70°W, 17.3', scribed and tagged  
20" Alder, S71°E, 45.6', scribed and tagged

Thence on random line I traversed to the N1/4 of Section 27 where I found:



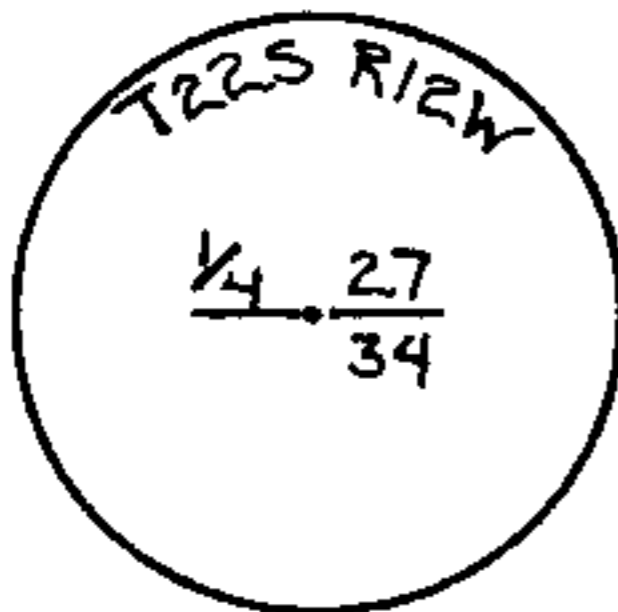
38" Cedar snag for original N1/4 with the following bearing tree;  
42" fir stump, N74°E, 10.4', scribed and tagged  
A 2 1/2" witness pipe bears S89 12' 06E, 21.04' from which the following bearing trees are;  
15" Fir, N87°30'E, 20.2', scribed and tagged  
60" Fir, N00°30'E, 43.3', scribed and tagged

Thence on random line I traversed to the E1/4 of Section 27 where I found:



1 1/2" iron pipe with OSBF brass cap and the following bearing trees;  
8" Myrtle, N11°E, 14.52', scribed and tagged  
30" Red cedar, S62°E, 39.6', scribed and tagged  
32" Myrtle, S70°W, 51.9', scribed and tagged

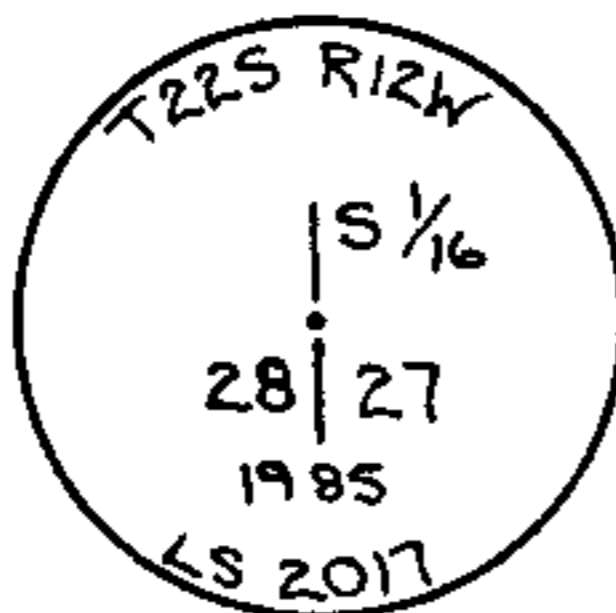
Thence on random line I traversed to the S1/4 of Section 27 where I found:



1 1/2" iron pipe with OSBF brass cap and the following bearing trees:  
40" Spruce, N73°W, 3.8', scribed and tagged  
20" D-fir, S28°E, 19.2', scribed

Thence on random line I traversed back to the SW section corner of Section 27, Township 22S Range 12W. I then calculated the position of the C1/4 and subdivided the SW1/4 of Section 27 T22S R12W using the 1973 BLM Manual of Surveying Instructions.

Beginning from the SW section corner of Section 27 Township 22S, Range 12W, I then surveyed on line N00°35' 42" W a distance of 1348.56' to the calculated position of the S1/16 west line of Section 27 where I set:



1 1/2" x 36" iron pipe with brass cap and the following bearing trees:  
36" Maple, N45°W, 31.5', tagged  
40" Cedar snag, 20' tall, S27°W, 10.5', tagged  
Distances are measured to a spike in the base and there is an X in the face of both trees.

C.S. File No. 63/238b

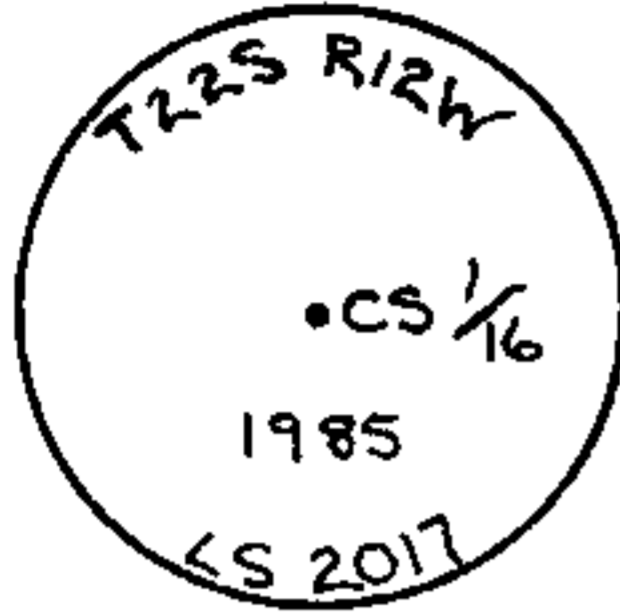
FILED  
RECEIVED *7/8*

AUG 21 1985

Douglas County Surveyor  
July 26, 1985  
Page Three

COUNTY SURVEYOR  
DOUGLAS COUNTY, ORE.

Thence on line I surveyed N82°51' 04" E a distance of 2707.64' to the calculated position of the CS 1/16 of Section 27 where I set:



1 1/2" x 36" iron pipe with brass cap and the following bearing trees:

12" Maple, S77°E, 13.8', tagged  
10" Chittum, N 11°W, 13.4', tagged  
Distances are measured to a spike in the base and there is an X in the face of both trees.

Thence on line I surveyed S00° 38' 30" W a distance of 1341.32' to the S1/4 Of Section 27, Township 22S, Range 12W.

This survey was performed with an error of closure of 1 part in 9100.

Respectfully Submitted  
for Record by,

David Klausman  
MENASHA CORPORATION  
P.O. Box 588  
North Bend, OR 97459

REGISTERED  
PROFESSIONAL  
LAND SURVEYOR

*David L. Klausman*

OREGON  
JULY 16, 1982  
DAVID L. KLAUSMAN  
2017

DK/cam  
Doc.0201L

C.S. File No. 63/230



# MENASHA CORPORATION

FOREST PRODUCTS GROUP, LAND & TIMBER DIVISION

FILED  
RECEIVED *JR*

AUG 21 1985

COUNTY SURVEYOR  
DOUGLAS COUNTY, ORE.

July 26, 1985

Douglas County Surveyor  
Douglas County Courthouse  
Roseburg, Oregon

Dear Sir:

This survey was conducted for the purpose of establishing property lines in Section 27, T22S-R12W, W.M., Douglas County, Oregon. Refer to plat dated July 26, 1985.

This survey was started in May, 1985, and was completed in July, 1985. A Pentax 10-D total station was used to establish property lines and corner positions. Basis of bearing was a solar observation taken on July 10, 1985.

Survey References used were:

G.L.O. William Thiel	1889, Subdivisions
Warren Hootman	1959, C.S. File No. 51/61
Arnold Gibson	1969, C.S. File No. 55/101
Arnold Gibson	1972, Map File M42-76
John Powell	1973, C.S. File No. 56/25
Karen Reed	1980, C.S. File No. 61/6
Robert Ward	1981, Map File M92-58
Karen Reed	1982, C.S. File No. 62/1

I began this survey at the SW section corner of Section 27, Township 22S Range 12W where I found:

1 1/2" iron pipe with OSBF brass cap and the following bearing trees;

- 70" Cedar, N42°W, 15.8', (Orig.)
- 37" Hemlock, S82°E, 110.1, scribed
- 20" Maple, S20°W, 50.2', scribed
- 59" Maple, N75°E, 74.6', scribed

FILED

RECEIVED

*zh*

AUG 21 1985

Douglas County Surveyor  
July 26, 1985  
Page Two

COUNTY SURVEYOR  
DOUGLAS COUNTY, ORE.

Thence on random line I traversed to the W 1/4 of Section 27 where I found:

1 1/2" iron pipe with OSBF brass cap and the following bearing trees;  
16" Alder, N42°W, 13.3', scribed and tagged  
22" Alder, N85°E, 20.4', scribed and tagged  
15" Alder, S70°W, 17.3', scribed and tagged  
20" Alder, S71°E, 45.6', scribed and tagged

Thence on random line I traversed to the N1/4 of Section 27 where I found:

38" Cedar snag for original N1/4 with the following bearing tree;  
42" fir stump, N74°E, 10.4', scribed and tagged  
A 2 1/2" witness pipe bears S89 12' 06E, 21.04' from which the following bearing trees are;  
15" Fir, N87°30'E, 20.2', scribed and tagged  
60" Fir, N00°30'E, 43.3', scribed and tagged

Thence on random line I traversed to the E1/4 of Section 27 where I found:

1 1/2" iron pipe with OSBF brass cap and the following bearing trees;  
8" Myrtle, N11°E, 14.52', scribed and tagged  
30" Red cedar, S62°E, 39.6', scribed and tagged  
32" Myrtle, S70°W, 51.9', scribed and tagged

Thence on random line I traversed to the S1/4 of Section 27 where I found:

1 1/2" iron pipe with OSBF brass cap and the following bearing trees:  
40" Spruce, N73°W, 3.8', scribed and tagged  
20" D-fir, S28°E, 19.2', scribed

Thence on random line I traversed back to the SW section corner of Section 27, Township 22S Range 12W. I then calculated the position of the C1/4 and subdivided the SW1/4 of Section 27 T22S R12W using the 1973 BLM Manual of Surveying Instructions.

Beginning from the SW section corner of Section 27 Township 22S, Range 12W, I then surveyed on line N00°35' 42" W a distance of 1348.56' to the calculated position of the S1/16 west line of Section 27 where I set:

1 1/2" x 36" iron pipe with brass cap and the following bearing trees:  
36" Maple, N45W, 31.5', tagged  
40" Cedar snag, 20' tall, S27W, 10.5', tagged  
Distances are measured to a spike in the base and there is an X in the face of both trees.

A.S. File No. 63/23e

FILED  
RECEIVED *JK*

AUG 21 1985

COUNTY SURVEYOR  
DOUGLAS COUNTY, ORE.

Douglas County Surveyor  
July 26, 1985  
Page Three

Thence on line I surveyed N82°51' 04" E a distance of 2707.64' to the calculated position of the CS 1/16 of Section 27 where I set:

1 1/2" x 36" iron pipe with brass cap and the following bearing trees:

12" Maple, S77°E, 13.8', tagged

10" Chittum, N 11°W, 13.4', tagged

Distances are measured to a spike in the base and there is an X in the face of both trees.

Thence on line I surveyed S00° 38' 30" W a distance of 1341.32' to the S1/4 Of Section 27, Township 22S, Range 12W.

This survey was performed with an error of closure of 1 part in 9100.

Respectfully Submitted  
for Record by,

David Klausman  
MENASHA CORPORATION  
P.O. Box 588  
North Bend, OR 97459



*David L. Klausman*



DK/cam  
Doc.0201L

A.S. File No. 63/23F