

SURVEY TO SET PROPERTY CORNERS
 SITUATED IN LOT 4 PHILLIPI ACRES
 IN THE W 1/2 OF SECTION 21, T. 26 S., R. 4 W., W.M.
 FOR: JAMES M. PATTON
 BY: AA SURVEYING SERVICE, INC.
 P.O. BOX 130 ROSEBURG, OR 97470

COUNTY SURVEYORS FILE DATA
DO NOT REMOVE FROM OFFICE

FILED CMO
 RECEIVED *h*

AUG 13 1985

COUNTY SURVEYOR
 DOUGLAS COUNTY, ORE.
 CMO

AUGUST 1985

SCALE: 1" = 50'

NARRATIVE

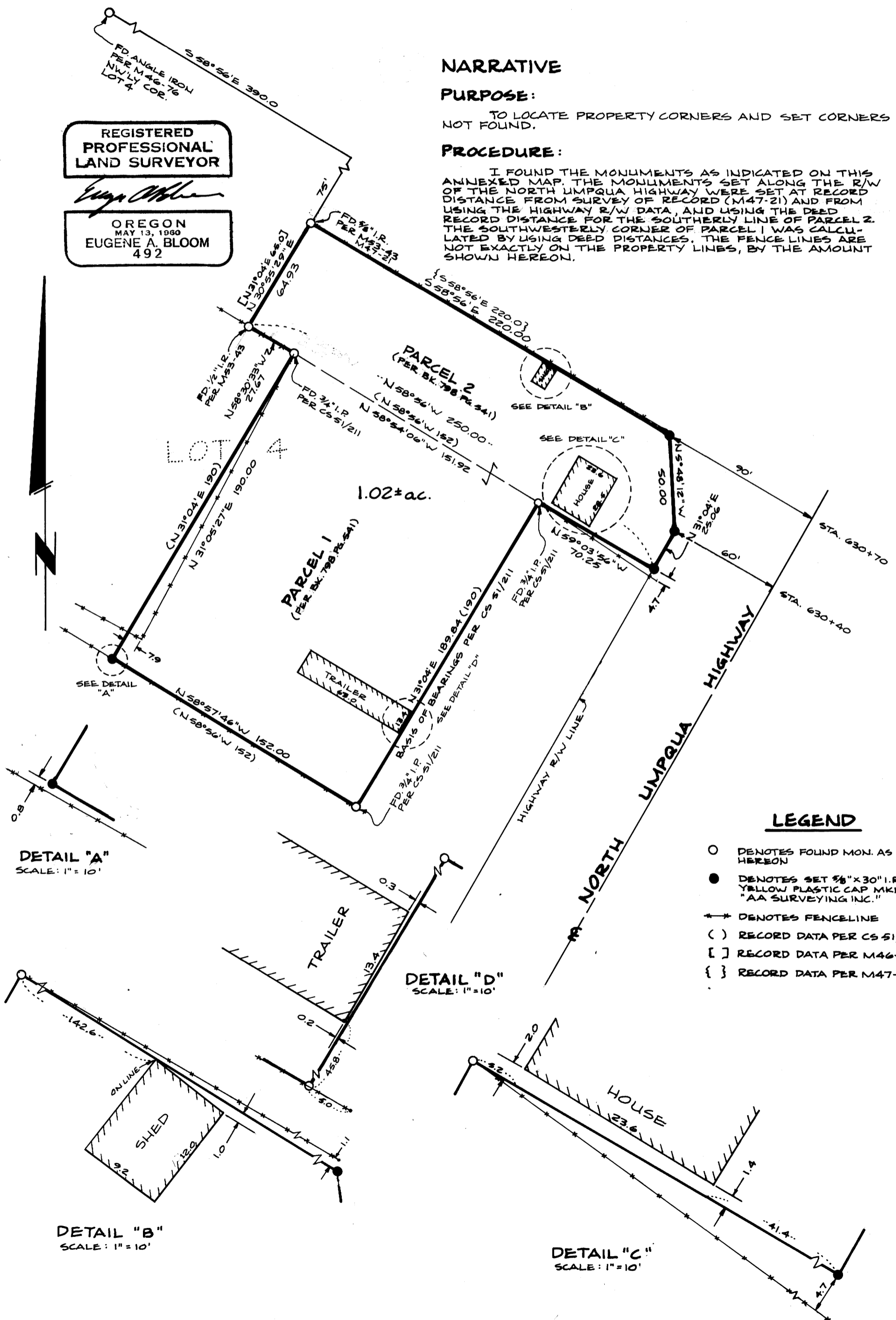
PURPOSE:

TO LOCATE PROPERTY CORNERS AND SET CORNERS NOT FOUND.

PROCEDURE:

I FOUND THE MONUMENTS AS INDICATED ON THIS ANNEXED MAP. THE MONUMENTS SET ALONG THE R/W OF THE NORTH UMPQUA HIGHWAY WERE SET AT RECORD DISTANCE FROM SURVEY OF RECORD (M47-21) AND FROM USING THE HIGHWAY R/W DATA, AND USING THE DEED RECORD DISTANCE FOR THE SOUTHERLY LINE OF PARCEL 2. THE SOUTHWESTERLY CORNER OF PARCEL 1 WAS CALCULATED BY USING DEED DISTANCES. THE FENCE LINES ARE NOT EXACTLY ON THE PROPERTY LINES, BY THE AMOUNT SHOWN HEREON.

REGISTERED PROFESSIONAL LAND SURVEYOR
Eugene A. Bloom
OREGON
 MAY 13, 1960
EUGENE A. BLOOM
 492



LEGEND

- DENOTES FOUND MON. AS SHOWN HEREON
- DENOTES SET 3/8" x 30" I.R. WITH YELLOW PLASTIC CAP MKD. "AA SURVEYING INC."
- DENOTES FENCELINE
- () RECORD DATA PER CS 51/211
- [] RECORD DATA PER M46-76
- { } RECORD DATA PER M47-21

DETAIL "A"
 SCALE: 1" = 10'

DETAIL "D"
 SCALE: 1" = 10'

DETAIL "B"
 SCALE: 1" = 10'

DETAIL "C"
 SCALE: 1" = 10'