

SURVEY FOR
U.S. FOREST SERVICE

RECEIVED

AUG 12 1985

LEGEND

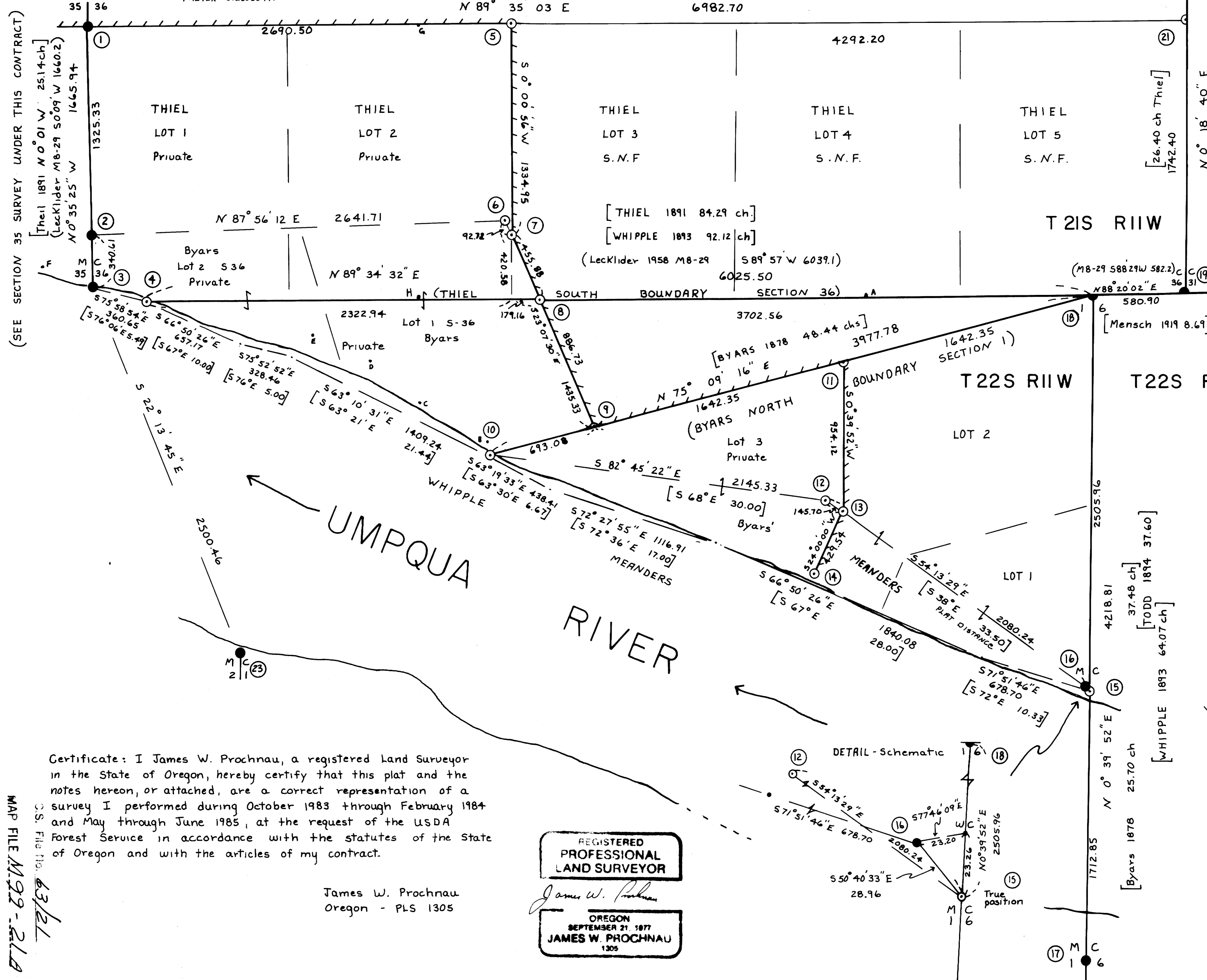
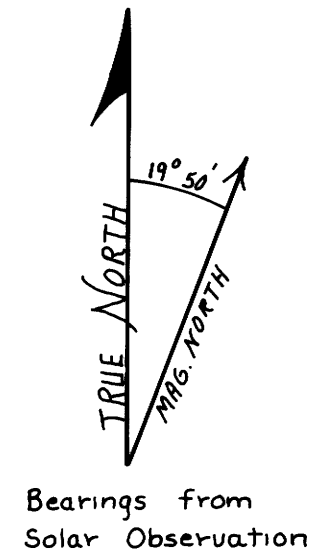
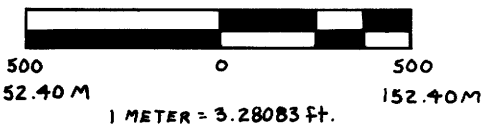
- Corner evidence found
 - Corner set by survey
 - Property line posted with 6' fiberglass posts with F.S. decals 54-2a or 1/2" x 5' rebar with F.S. signs 54-2.
 - () Bearings and distances of record from local surveys
 - [] Bearings and distances of record from GLO surveys
- S.N.F. Siuslaw National Forest

COUNTY SURVEYOR
DOUGLAS COUNTY, ORE
CMO

SMITH - UMP CADASTRAL
CONTRACT NO. 53-04T0-3-0935N
SECTION 36, T21S R11W, W. M.
SECTION 1, T22S R11W, W. M.
DOUGLAS COUNTY, OREGON

JULY 15, 1985

SCALE 1" = 500'



3206.31
N 0° 18' 40" E
(Lecklider M8-29 S 0° 27' W 3236.7)
[191 Mensch N 0° 06' W 48.72]

580.90
N 88° 20' 02" E 36
[Mensch 1919 8.69]

4218.81
37.48 ch
[TODD 1894 37.60]
[WHIPPLE 1893 64.07 ch]

1712.85
N 0° 39' 52" E
[Byars 1878 25.70 ch]

Narrative: This survey is a closed traverse made by Jackson & Prochnau, Inc., P.O. Box 177, Albany, Oregon 97321. Equipment used was a Wild T-16 theodolite with DI4 EDM and a Wild T-1 theodolite with citation 450 EDM.

This survey deals with a complex set of circumstances created by both unsurveyed land and an overlap between two original surveys. Work on this contract was initially begun in October 1983 and the majority completed in February 1984. Due to the above circumstances and the lack of supporting evidence for corners No. 1 and 3, our work in this area was suspended pending a BLM investigation.

History -

1874 - W.H. Byars meanders Umpqua River and surveys portions of T21, 22S R11W along the river, creating lots in Sections 35, 36 and Section 1.

1891 - William Thiel subdivides portions of T21S R11W North of river. Thiel surveys the South, East and West boundary of Section 36. In the course of his survey, Thiel discovers an error in Byars' computations, ignores Byars' corner to 36 (10), and sets his own corner (4). This creates a conflict in the lotting of 36 and a hiatus between the South boundary of 36 and the North boundary of Section 1 as surveyed by Byars.

1893 - William Whipple conducts an examination of Byars' meanders and East boundary of Section 1 and Thiels South boundary of 36.

1894 - Aurelius Todd retraces the East boundary of Section 1.

1919 - F. Mensch et al, re-establishes closing corner 36 31 (19) and resurveys the West boundary of T21S R11W.

1939 - Harold Lewis, PE 722, M11-70, monuments a position for the 1/4 35|36 (1), and apparently recovers Byars' MC 35|36 (3). The validity of corners 15 unclear due to the lack of supporting evidence.

1957-61 - G.R. Lecklider, PE 4079, surveys sections 36 and 1, M8-29 and CS # 51|215, recovering Lewis' 1/4 35|36 and the apparent MC 35|36.

1983-84 - This contract begins and is subsequently suspended.

1984 - BLM begins investigation under special instructions dated June 7, 1984, at the request of the USDA Forest Service. The investigation confirms the existence of both unsurveyed public land and a conflict between the Byars, Thiel surveys.

1985 - Contract work in this area resumes and is completed.

The results of the investigation and the ensuing recommendation on monumentation and boundary location were discussed at a meeting attended by representatives of our firm, the USFS and the BLM. In addition, the results of the investigation lent credibility to the two questionable corners 1 and 3 (per Lewis) and we concur with the BLM and accept the evidence found as the true positions.

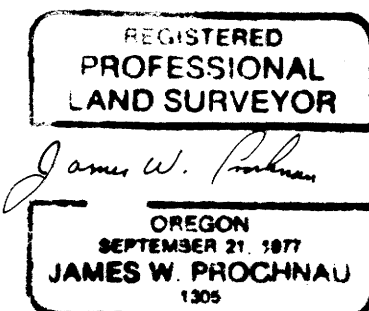
MONUMENTATION - Section 36 - NE cor. Lot 5 (2), at record 26.40 ch. (Thiel plat) North on line from 36|31 (19), to 1/4 31 only (22); NW cor. Lot 3 (5), at 60.00 ch. proportional measure West from NE Lots (2) to 1/4 35|36 (1) (Thiel plat.); 36 M Thiel (4), determined from Whipples adjusted record meanders between the MC 35|36 (3) and the recovered Whipple "X" (16), SW cor. Lot 3 (not set) at 60.00 ch proportional measure West from 36|31 (19), on line between 1|6 (18) and 36 M (4) (Thiel plat.); 36 M Byars (10), from Whipple adjusted record meanders as with (4); SE Lot 1 Byars (9) at 40.00 chs proportional measure East from 1|6 (18), toward 36 M (10) (Byars plat); NE Lot 1 Byars (6) at 40.00 ch. East departure from 5 1/16 35|36 (2) and 20.00 ch North latitude from SE Lot 1 (9) (Byars plat)

Section 1 - NW Lot 2 Byars (11), at 20.00 ch. proportional measure West from 1|6 (18) toward 36 M (10) (Byars plat); MC 1|6 (15) at 25.70 ch. proportional measure North from MC 1|6 (17) to 1|6 (18) using Todds 37.60 ch. + Byars 25.70 ch; Byars Angle Point (12) established from Byars adjusted record meanders between 36 Byars (10), and MC (15); Line between Lots 2 and 3 surveyed parallel to East boundary of T22S R11W (Byars plat) to a point on Byars adjusted meander line, (13), then perpendicular to the river to a witness point (14).

Copies of BLM correspondence and recommendations are filed with this survey.

Certificate: I James W. Prochnau, a registered Land Surveyor in the State of Oregon, hereby certify that this plat and the notes hereon, or attached, are a correct representation of a survey I performed during October 1983 through February 1984 and May through June 1985, at the request of the USDA Forest Service in accordance with the statutes of the State of Oregon and with the articles of my contract.

James W. Prochnau
Oregon - PLS 1305



MAP FILE M.99-21A

C.S. File No. 63121
MAP FILE M.99-21A