

COUNTY SURVEYORS FILE DATA
DO NOT REMOVE FROM OFFICE

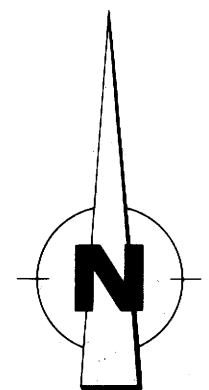
PROPERTY SURVEY
FOR
INTERNATIONAL PAPER CO.
S1/2 SECTION 34, T22S, R10W

FILED ✓
RECEIVED ✓
JAN 14 1985
COUNTY SURVEYOR
DOUGLAS COUNTY, ORE.
✓

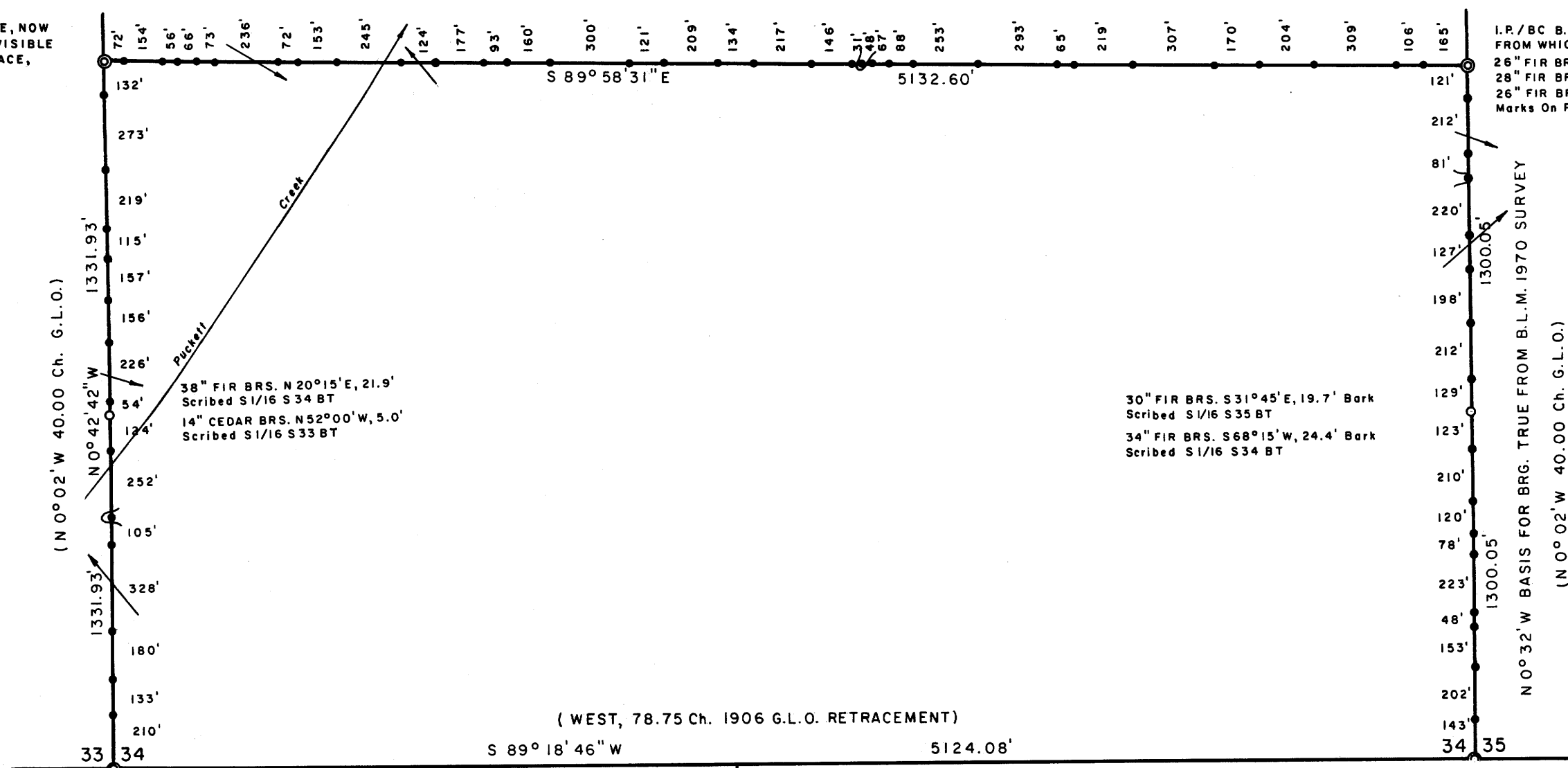
MAP FILE M 98 - 9

ORIGINAL 5" FIR CORNER TREE, NOW
16" DIA. WITH 1/4 S SCRIBING VISIBLE
ON PARTIALLY OPENED WEST FACE,
FROM WHICH I MARK NEW BT'S:
28" FIR BRS. N 57°30' E, 32.4'
Scribed 1/4 S 34 BT
24" FIR BRS. N 17°00' W, 8.2'
Scribed 1/4 S 33 BT

I.P./BC B.L.M. 1970
FROM WHICH:
26" FIR BRS. N 40° E, 35.0' Closed Face, B.L.M.
28" FIR BRS. N 79°30' W, 8.6' Closed Face, B.L.M.
26" FIR BRS. S 81° E, 15.8' Fragmentary Scribe
Marks On Partially Opened Face, No Record



SCALE 1" = 500'
JAN. 1985



I.P./BC O.S.B.F. 1962 RS 359
FROM WHICH:
40" FIR SNAG, 20' HIGH, BRS. N 15° E, 7.9' No Visible Scribe, Orig. BT
22" FIR BRS N 32° E, 17.8' Closed Face, O.S.B.F.
30" FIR STUMP BRS. S 55° W, 11.2' Closed Face, Orig. BT
26" FIR STUMP BRS. N 62° W, 122.1' Visible Scribe, O.S.B.F.

BRASS TABLET IN SOLID ROCK B.L.M. 1970
FROM WHICH:
ROOT HOLE BRS. N 80° E, 7.9' DOWN 30" FIR ALONGSIDE
Closed Face, Orig. BT
ROOT HOLE BRS. S 6° W, 9.9' DOWN 52" FIR ALONGSIDE
Fragmentary Scribe Marks On Partially Opened Face, Orig. BT
50" FIR BRS. N 6° E, 116.0', Closed Face, O.S.B.F.
30' BLUFF BRS. N 31° W, 15.0' Mkd. XBO On East Face, O.S.B.F.

LEGEND
CORNERS FOUND ©
SET 1/4 x 36" I.P.'S / STAMPED BRASS CAPS (PLS 497) ○
SET 1/2 x 60" I.R.'S / ATTACHED ALUMINUM PROPERTY
LINE SIGNS. LINES ARE ALSO MARKED WITH RED PAINT-
ED BLAZES AND RED RIBBON. —●—
(SURVEYS OF RECORD)

NARRATIVE
A CLOSED TRAVERSE WAS RUN AROUND THE SOUTH 1/2 OF SECTION
34 USING A KERN KI-SE/DM 502, AND THE SOUTH 1/16 CORNERS
WERE SET BY SINGLE PROPORTIONATE MEASUREMENT FROM THIS
TRAVERSE. OFFSETS WERE COMPUTED AND MADE TO THE TRUE PROP-
ERTY LINE.
DISTANCES ARE TAKEN TO A 50d NAIL IN THE CENTER OF EACH BEAR-
ING TREE.

REGISTERED
PROFESSIONAL
LAND SURVEYOR

Richard J. Hintz
OREGON
MAY 13, 1980
RICHARD J. HINTZ
497

RICHARD J. HINTZ
1890 N. 14th ST.
COOS BAY, OREGON

MAP FILE M 98 - 9