

**SURVEY TO MONUMENT A PARCEL IN BLOCK 13,
AMENDED MAP OF JONES ADDITION TO ROSEBURG ORE.
SITUATED IN THE NW 1/4 OF SEC. 18, T27S, R5W W.M.**

FOR: HUNTS CHAIN SAW
BY: AA SURVEYING SERVICE, INC. P.O. BOX 130 ROSEBURG, ORE. 97470

JUNE 1985

SCALE: 1" = 50'

COUNTY SURVEYORS FILE DATA
DO NOT REMOVE FROM OFFICE

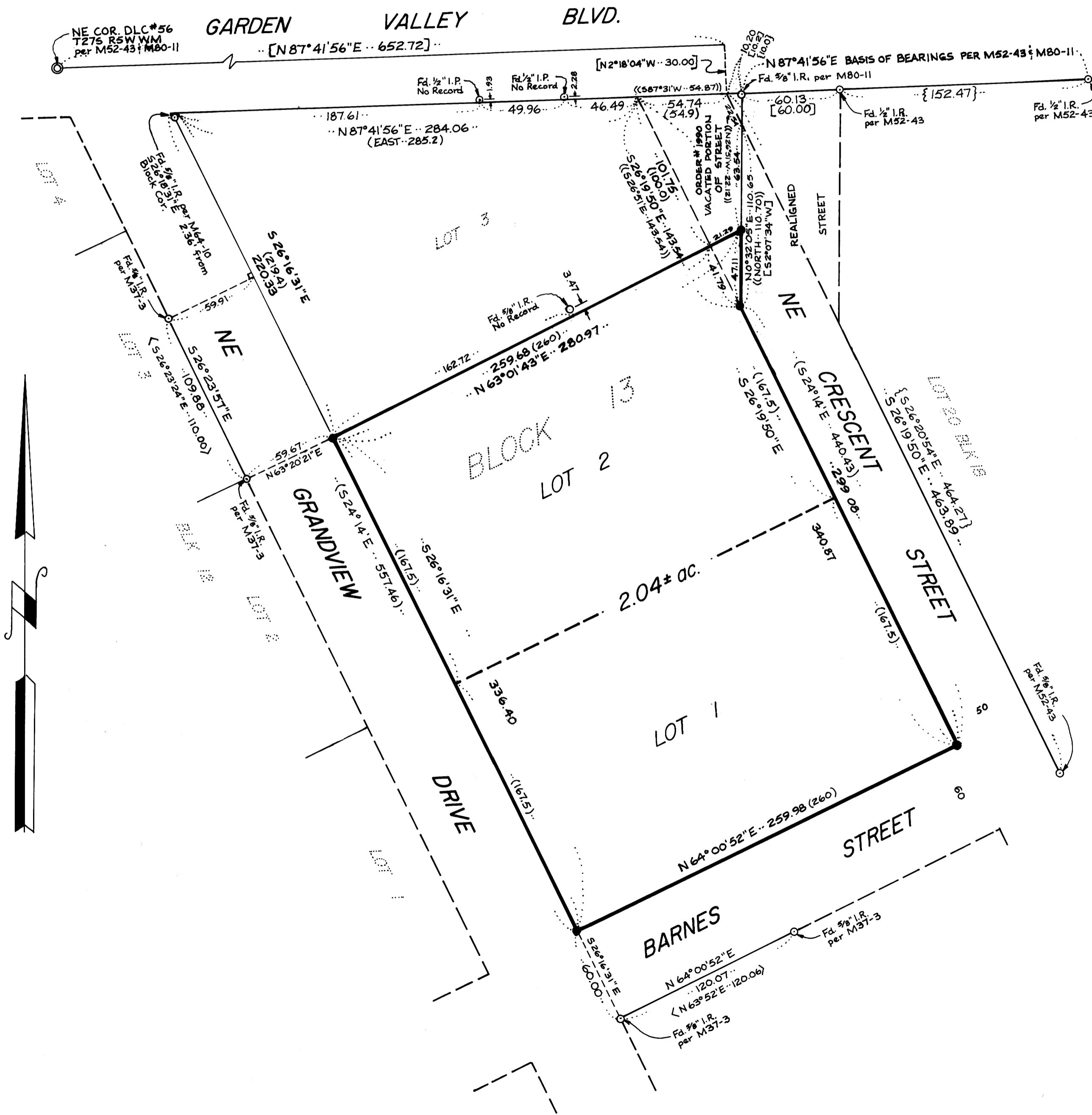
FILED CMO
RECEIVED 1/2

JUN 20 1985

COUNTY SURVEYOR
DOUGLAS COUNTY, ORE.

CMO

MAP FILE M.98-78



NARRATIVE

PROCEDURE: After a diligent search, the monuments so indicated on this map were found. I accepted the monument along the Northeastly line of Crescent Street and the Southeastly line of Barnes Street per M52-43 and M37-3 respectively. I accepted the North line of Block 13 as per M80-11 and M52-43, and the 3/8" Iron Rod near the NW corner of Block 13 as a point on the Northeastly line of Grandview Drive. I re-established the exterior corners of the original Block as shown, then established the Lot corners at the proportionate distances. I established the Vacated Portion of NE Crescent Street per City Ordinance No. 1990.

INSTRUMENT: TOPCON GTS-2

LEGEND

- ⊙ Denotes found mon. as shown hereon
- Denotes 3/8" x 30" Iron Rod Set with 1/4" yellow plastic cap marked: AA SURVEYING SERV.
- () Record per Amended Map Of Jones Addition To Roseburg (V3, P8)
- [] Record per M80-11
- { } Record per M52-43
- < > Record per M37-3
- ⟨ ⟩ Record per Roseburg City Ordinance No. 1990

REGISTERED
PROFESSIONAL
LAND SURVEYOR
David Stanger
DAVID STANGER

MAP FILE M.98-78