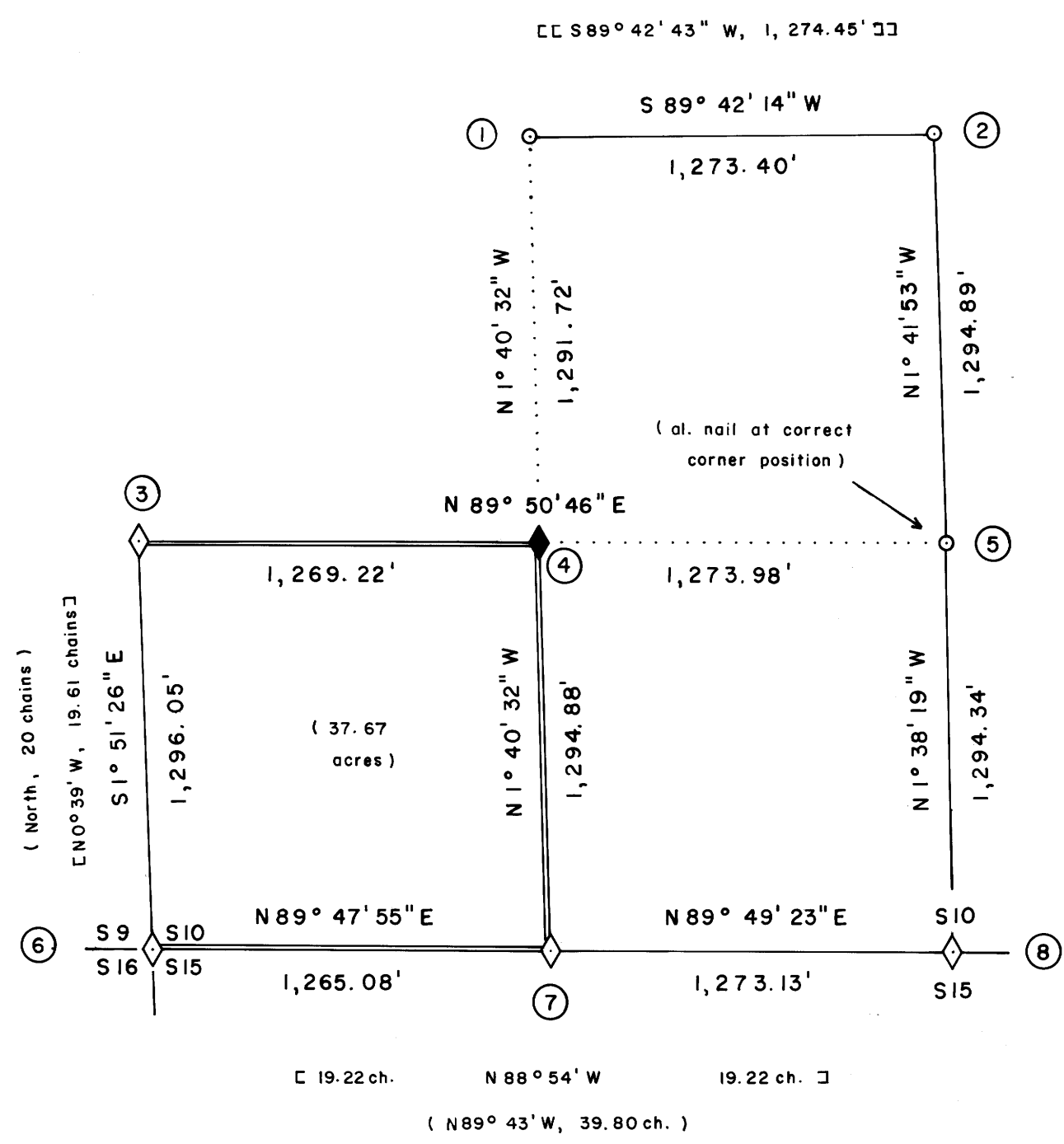


FILED CMO
 RECEIVED
 JUN 5 1985
 COUNTY OF DOUGLAS
 CLERK



- ⑥ SECTION CORNER S9/S10/S15/S16
 Found a 1958 B.L.M. BCIP, and the following accessories:
 14" fir bears S22°E, 52.5' (rec. = 52.8')
 Closed face (1958)
 19" fir stump, 3' tall, bears N36°W, 48.5'
 Closed face (1958)
 15" fir bears N17°E, 62.4'
 Closed face (1958)
 SW cedar BT not found
 Set: 5" fir bears S71°W, 34.9'
 Scribed: X BT
 12" fir bears N20°W, 18.1'
 Scribed: T28S R4W S9 BT
- ⑦ W 1/16 CORNER S10/S15
 Found a 1958 B.L.M. BCIP, and the following accessories:
 29" double cedar bears S5°30'W, 35.0'
 Closed face (1958)
 Root hole with down fir alongside, bears N60°45'W, 47.9'
 (rec. = 46.2')
 Set: 9" fir bears N42°W, 8.9'
 Scribed: W1/16 S10 BT
- ⑧ 1/4 CORNER S10/S15
 Found a 1958 B.L.M. BCIP, and the following accessories:
 34" fir bears S38°15'W, 35.6'
 Closed face (1958)
 19" fir bears N13°15'E, 41.9' (rec. = 41.2')
 Closed face (1958)

- LEGEND**
- ◊ corner set this survey
 - ◇ B.L.M. corner found and used for control
 - 5/8" iron rod, set by Burton Holt, P.L.S. 418, found and used for control
 - property line posted
 - () 1881 G.L.O. record course
 - ⊃ 1958 B.L.M. dependent resurvey record course
 - ⊂⊂ 1981 Burton Holt record course per M90-5, a survey filed in the Douglas County Surveyor's Office

- NOTES**
- 1) ACIP refers to a 2-1/2" aluminum cap set on a 7/8" x 36" iron pipe. The cap is stamped according to the description given in the 1973 B.L.M. Manual of Surveying Instructions, Chapter IV. It is also stamped PLS 1988.
 - 2) B.L.M. BCIP refers to a 3-1/4" brass cap set on a 2-1/2" galvanized iron pipe.
 - 3) All bearings to corner accessories were taken with a hand compass. Mean magnetic variation equals 19° 45' E.
 - 4) Distances to bearing trees are taken to the side and center of the tree, one foot above the root crown.
 - 5) This survey was run with a Topcon GTS-2.

SURVEY NARRATIVE

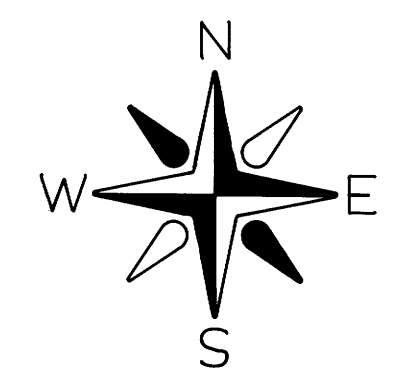
This survey was conducted to establish the property line for Champion International Corporation, in Sec. 10, T28S, R4W, W.M., Douglas County, Oregon. Basis of bearing was obtained from a bearing between the C1/4 corner Sec. 10 and the S1/4 corner Sec. 10 (S 1° 40' 06" E), as shown on a 1981 Burton Holt survey of Sec. 10, T28S, R4W, on file in the Douglas County Surveyor's Office (M90-5).

Sec. 10 was originally surveyed by William H. Byars, in 1881. The B.L.M. ran a dependent resurvey on the exterior lines of Sec. 10, in 1958. In 1981, Burton Holt, PLS 418, subdivided portions of Sec. 10.

Controlling corners used, were proportioned and set by the B.L.M. or Burton Holt. An aluminum nail, set in a stump by Holt, marks the correct position of the CS 1/16 corner of Sec. 10. An iron rod was used to reference the nail. The SW 1/16 corner was set at the intersection of lines connecting opposite 1/16 corners.

All traverses run were closed, loops with a minimum acceptable error of closure of one part in 4,000. Property lines were posted with 5' steel fence posts with attached "Champion" tags. Line was also blazed and flagged.

RONALD G. GEISLER
 Oregon P.L.S. 1988.
 P.O. Box 1328
 Roseburg, Oregon 97470



SCALE: 1" = 500'

- ① CW 1/16 CORNER S10
 Found a 5/8" iron rod, set in 1981 by Holt, and the following accessories:
 7" fir bears N30°W, 12.8'
 Scribing visible (1981)
 15" cedar bears N69°W, 30.55' (rec. = N76°W, 31.0')
 Scribing visible (1981)
- ② C 1/4 CORNER S10
 Found a 5/8" iron rod, set in 1981 by Holt, and the following accessories:
 8" fir bears N39°E, 9.0'
 Scribing partially visible (1981)
 7" laurel bears S38°W, 10.0'
 Scribing visible (1981)
- ③ S 1/16 CORNER S9/S10
 Found a 1958 B.L.M. BCIP, and the following accessories:
 45" fir bears N58°W, 39.9' (rec. = 40.9')
 Healed face (1958)
 12" madrone bears S64°E, 14.7'
 Scribing visible (1958)
- ④ SW 1/16 CORNER S10
 Set an ACIP, and the following accessories:
 18" cedar bears N63°W, 20.75'
 13" cedar bears S19°E, 19.9'
 Both BT's scribed: SW 1/16 S10 BT
- ⑤ CS 1/16 CORNER S10
 Found an aluminum nail in the SE corner of a 38" fir stump. Also found a 5/8" iron rod S1°31'15"W, 2.03' from nail, and the following accessories:
 7" fir bears N12°E, 6.7' (rec. = N4°W) (1981)
 9" fir bears S11°W, 37.8' (1981)
 Scribing partially visible on both BT's



**SURVEY OF SW 1/4
 SEC. 10, T28S, R4W, W.M.
 DOUGLAS COUNTY, OREGON
 BY
 CHAMPION INTERNATIONAL CORPORATION**

MAY 1985
 R.G.G.

COUNTY SURVEYORS FILE DATA
 DO NOT REMOVE FROM OFFICE

MA 198-72

MA 198-72