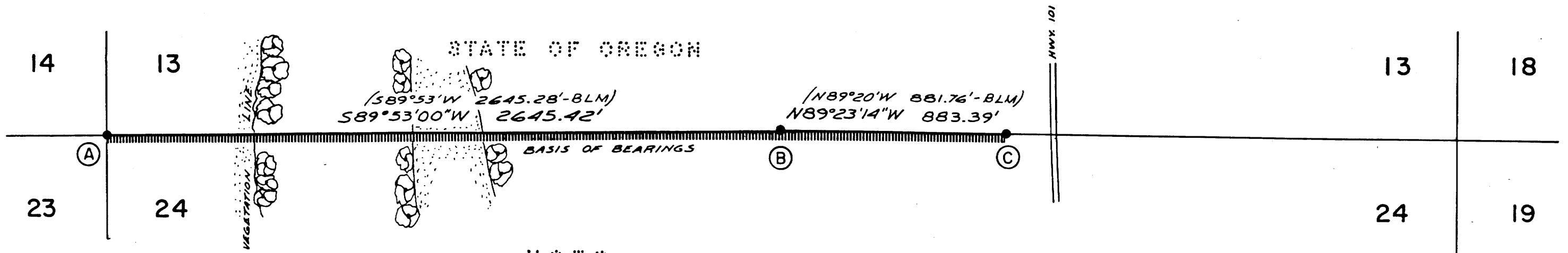


RECORD OF SURVEY PLAT: FLORENCE PORT CADASTRAL
FOR THE U.S. FOREST SERVICE, IN T. 22 S, R. 13 W, W.M.
DOUGLAS COUNTY, OREGON. JANUARY 20, 1985
CONTRACT NO. P.O. 00-04 TO - 4-604 (84-818)

FILED CMO
RECEIVED *vl*
JUN 4 1985
COUNTY SURVEYOR
DOUGLAS COUNTY, ORE.
CMO



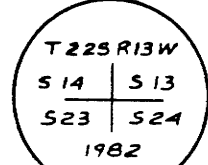
NOTES
The purpose of this survey is to post the lines between property administered by the Oregon Dunes National Recreation Area or the U.S. Forest Service and any other property, and to maintain certain corners previously monumented or re-monumented by the Bureau of Land Management.

This survey was accomplished using theodolites, electronic distance meters, and steel tapes to measure random traverses between existing monuments previously set in 1982 by the Bureau of Land Management. The bearings are as reported by the BLM, except on the line between Sections 13 and 24. That line was run as a closed traverse, as our distance did not check the BLM's within limits. Since our traverse closed quite well, the assumption is made that the BLM witness point is out of position, or that the figures reported on their plat are somewhat in error.

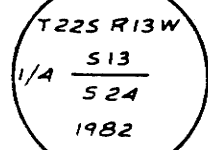
All reference monuments set in this survey are 2 1/4\" x 30\" aluminum pipes with 3/4\" aluminum caps with magnets attached under the caps. All bearing trees have a BT tag facing the corner, a red paint band, and an appropriate sign on the back. All bearing trees marked in this survey have a brass washer, stamped PLS 909, at the center of the lower blaze. Distances and bearings are to the center of the bearing trees.

All field notes are in my field books Nos. 1 and 2.

(A) SECTION CORNER 13-14-23-24: FOUND BLM BRASS CAP IN 2\" IRON PIPE IN CONCRETE, IN OPEN SAND. NO BT'S FOUND OR AVAILABLE. NO RM SET DUE TO LOOSE SAND.



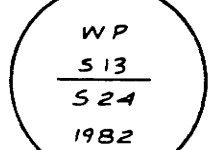
(B) 1/4-CORNER 13-24: FOUND BLM ALUMINUM CAP AND PIPE.



BT's FOUND:
9\" FIR, N 53 1/2° E, 21.5 FEET, SCRIBED \"1/4 S 13 BT\"
12\" PINE, S 5 1/4° E, 38.9 FEET, SCRIBED \"1/4 S 24 BT\"
8\" FIR SNAG, N 25 1/2° W, 5.9 FEET, SCRIBED \"1/4 BT\"
8\" PINE SNAG, SOUTH, 2.6 FEET, SCRIBED \"1/4 BT\"
RM SET:
USFS ALUMINUM MONUMENT, S 21° 12' E, 46.7 FT

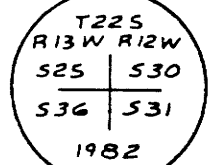


(C) WITNESS POINT: FOUND BLM ALUMINUM CAP ON 5/8\" ALUMINUM ROD SET IN A 3-FOOT DIAMETER FIR STUMP.



BT's FOUND:
12\" PINE, N 23 1/2° W, 6.3 FEET, SCRIBED \"X BT\"
8\" FIR, S 36° W, 15.5 FEET, SCRIBED \"X BT\"

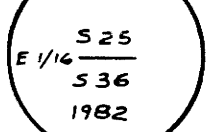
(D) SECTION CORNER 25-36, 30-31: FOUND BLM ALUMINUM CAP AND PIPE.



BT's FOUND:
7\" PINE, DEAD, N 37° E, 23.8 FT, SCRIBED \"R12W S30 CS BT\"
10\" PINE, N 12° W, 15.8 FT, SCRIBED \"R13W S25 CS BT\"
18\" PINE, S 71° E, 15.8 FT, HEALED BLAZE
10\" FIR, S 10 1/2° E, 25.4 FT, SCRIBED \"T225 R12W S31 BT\"
NE COR OF A-FRAME HOUSE, S 64 1/2° W, 44.9 FT, NOT SCRIBED
BT SET:
5\" FIR, N 54° E, 13.2 FT, SCRIBED X BT
RM SET:
USFS ALUMINUM MONUMENT, N 82° 23' W, 54.8 FT



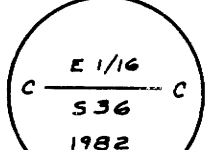
(E) EAST 1/16 CORNER SECTIONS 25-36: FOUND BLM BRASS CAP ON 2 1/2\" IRON PIPE.



BT's FOUND:
13\" CEDAR, N 10 3/4° W, 16.5 FT, SCRIBED \"E 1/16 S25 BT\"
25\" FIR, S 53 3/4° E, 43.2 FT, SCRIBED \"E 1/16 S36 BT\"
RM SET:
USFS ALUMINUM MONUMENT, N 60° 17' W, 49.2 FT



(F) CENTER-EAST 1/16-CORNER SECTION 36: FOUND BLM BRASS CAP ON IRON PIPE IN CONCRETE.



BT's FOUND:
10\" FIR, N 54° 1/2° E, 46.9 FT, SCRIBED \"CE 1/16 S36 BT\"
12\" PINE, S 55° E, 63.0 FT, SCRIBED \"CE 1/16 S36 BT\"
NO RM SET DUE TO LOOSENESS OF SAND.

(G) SOUTH-EAST 1/16 CORNER SECTION 36: FOUND BLM ALUMINUM CAP AND PIPE IN CONCRETE.



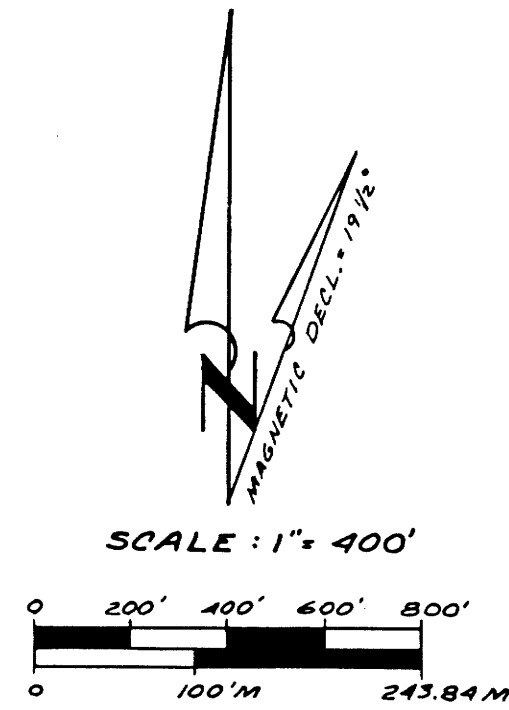
BT FOUND:
10\" PINE, S 78 1/2° E, 343.9 FT, SCRIBED \"SE 1/16 S36 BT\"
NO RM SET DUE TO LOOSE SAND

I, William L. Shull, a registered land surveyor in the State of Oregon, hereby certify that this plat and the notes hereon are a correct representation of a survey I performed during October and November of 1984, and January of 1985, at the request of the USDA, Forest Service, in accordance with the statutes of Oregon and with the articles of my contract.

REGISTERED PROFESSIONAL LAND SURVEYOR

William L. Shull
OREGON
JULY 11, 1969
WILLIAM L. SHULL
909

AZIMUTH SURVEYING & ENGINEERING
1560 LANCASTER DR. NE, SALEM, OREGON 97301
PHONE: 504-0026 / 973-5975 JOB No: 04-36



- LEGEND**
- △ - Indicates Standard USFS Road Crossing Sign
 - () - Indicates Data of Record. BLM- Bureau of Land Management
 - ▬▬▬▬ - Indicates Boundary Line Posted with Carsonite Posts
 - - Denotes Existing Corner Found as Noted
 - ⊗ - Vegetation
 - - Open Sand

