

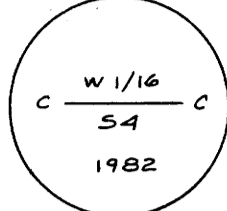
DO NOT REMOVE FROM OFFICE

RECORD OF SURVEY PLAT: FLORENCE PORT CADASTRAL FOR THE U.S. FOREST SERVICE, IN T. 20 S, R. 12 W, W.M. DOUGLAS COUNTY, OREGON APRIL 10, 1985 CONTRACT NO. P.O. 00-04 TO -4-604 (84-818)

FILED CMO RECEIVED JUN 4 1985

COUNTY SURVEYOR DOUGLAS COUNTY, ORE CMO

(A) CENTER-WEST 1/16 CORNER SECTION 4: FOUND 2 1/2" DIA ALUMINUM MONUMENT, 4" EXPOSED. BT'S FOUND: 13" PINE, S 23°W, 100.0 FEET, SCRIBING VISIBLE (BLM) 10" FIR, N 45° W, 30.7 FEET, HEALED BLAZE (BLM) (9" FIR, N44 1/2°W, 46 1/2 LINKS -- BLM)



(B) HIGHWAY WITNESS POINT: FOUND 2" IRON PIPE, FLUSH WITH GROUND, BRASS CAP MARKED "LS 849 C2C HWY 101 1974". THIS MONUMENT IS 4.85 FEET EAST OF LINE, AND WAS NOT USED IN THIS SURVEY OR BY BLM BT'S FOUND: 15" CEDAR, N80°E, 15.0 FEET, HEALED BLAZE (FOESTE) 24" HEMLOCK, N40°W, 4.0 FEET, HEALED BLAZE (FOESTE)

(C) WEST 1/16 CORNER SECTIONS 4-9: FOUND 2" IRON PIPE WITH BRASS CAP, 4" EXPOSED. BT'S FOUND: 26" SPRUCE, N62°E, 15.2 FEET, HEALED BLAZE (26" SPRUCE, N61 1/2°E, 23 LINKS, BLM RECORD, FOESTE TREE) 14" SPRUCE, S 7°E, 8.5 FEET, HEALED BLAZE (14" SPRUCE, S 7° E, 13 LINKS, BLM RECORD, FOESTE TREE) REFERENCE MONUMENT SET: USFS ALUMINUM MONUMENT, N11°46'W, 43.7 FEET, 4" EXPOSED



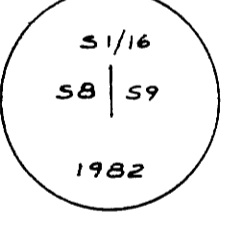
(D) SECTION CORNER 4-5-8-9: FOUND 2 1/2" IRON PIPE WITH BRASS CAP, 3" EXPOSED. BO'S FOUND: 2 1/2" IRON POST, N 63°E, 38.3 FEET, BRASS CAP MARKED "RM T20S R12W S4 38.3 FT TO COR 1982", WITH ARROW POINTING TO CORNER, 1" EXPOSED 2 1/2" IRON POST, S27°E, 32.0 FEET, BRASS CAP MARKED "RM T20S R12W S9 32 FT TO COR 1982", WITH ARROW POINTING TO CORNER, 1" EXPOSED



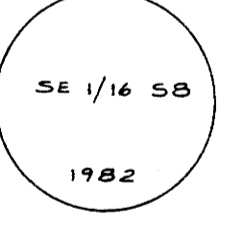
(E) 1/4 CORNER SECTIONS 8-9: FOUND 2" ALUMINUM MONUMENT, TOP EXTENDING 7" ABOVE GROUND. BT'S FOUND: 41" SPRUCE STUMP, S69°E, 12.2 FEET, SCRIBE MARKS "BT" VISIBLE IN PARTIALLY OPEN BLAZE (41" SPRUCE STUMP, S69°E, 18 LINKS, BLM) 41" SPRUCE STUMP, S45°W, 9.3 FEET, SCRIBE MARK "4" VISIBLE IN PARTIALLY OPEN BLAZE (41" SPRUCE STUMP, S45°W, 12 LINKS, BLM) 5" SPRUCE, N45 1/2°E, 19.2 FEET, HEALED BLAZE (5" SPRUCE, N45 1/2°E, 29 LINKS, BLM) 13" SPRUCE, N72 1/2°W, 11.0 FEET, HEALED BLAZE (13" SPRUCE, N74 1/2°W, 17 LINKS, BLM) REFERENCE MONUMENT SET: 2 1/2" USFS ALUMINUM MONUMENT, N34°32'W, 49.6 FEET, 2" EXPOSED



(F) SOUTH 1/16 CORNER, SECTIONS 8-9: FOUND ALUMINUM PIPE WITH ALUMINUM CAP, 4" EXPOSED. BT'S FOUND: 12" PINE, N 6°W, 10.9 FEET, SCRIBING VISIBLE (12" PINE, N 9°W, 16 1/2 LINKS, BLM) 17" FIR, N88°E, 32.7 FEET, SCRIBING VISIBLE (17" FIR, N87°E, 49 1/2 LINKS, BLM) REFERENCE MONUMENT SET: 2 1/2" USFS ALUMINUM MONUMENT, N66°08'W, 48.4 FEET, 2" EXPOSED



(G) SOUTH-EAST 1/16 CORNER, SECTION 8: FOUND ALUMINUM MONUMENT ON 5/8" ALUMINUM ROD, TOP 7" (OF 18 FEET) EXPOSED, IN OPEN SAND BT FOUND: 11" DOUGLAS FIR, N25°E, 171.6 FEET, LOWER BLAZE BURIED IN SAND, UPPER BLAZE 2 FEET ABOVE SAND (10" FIR, N22 1/2°E, 260 1/2 LINKS -- BLM)



NOTES

The purpose of this survey is to post the lines between property administered by the Oregon Dunes National Recreation Area or the U.S. Forest Service and any other property, and to maintain certain corners previously monumented or re-monumented by the Bureau of Land Management.

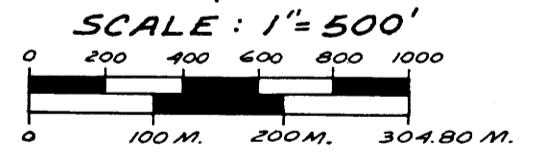
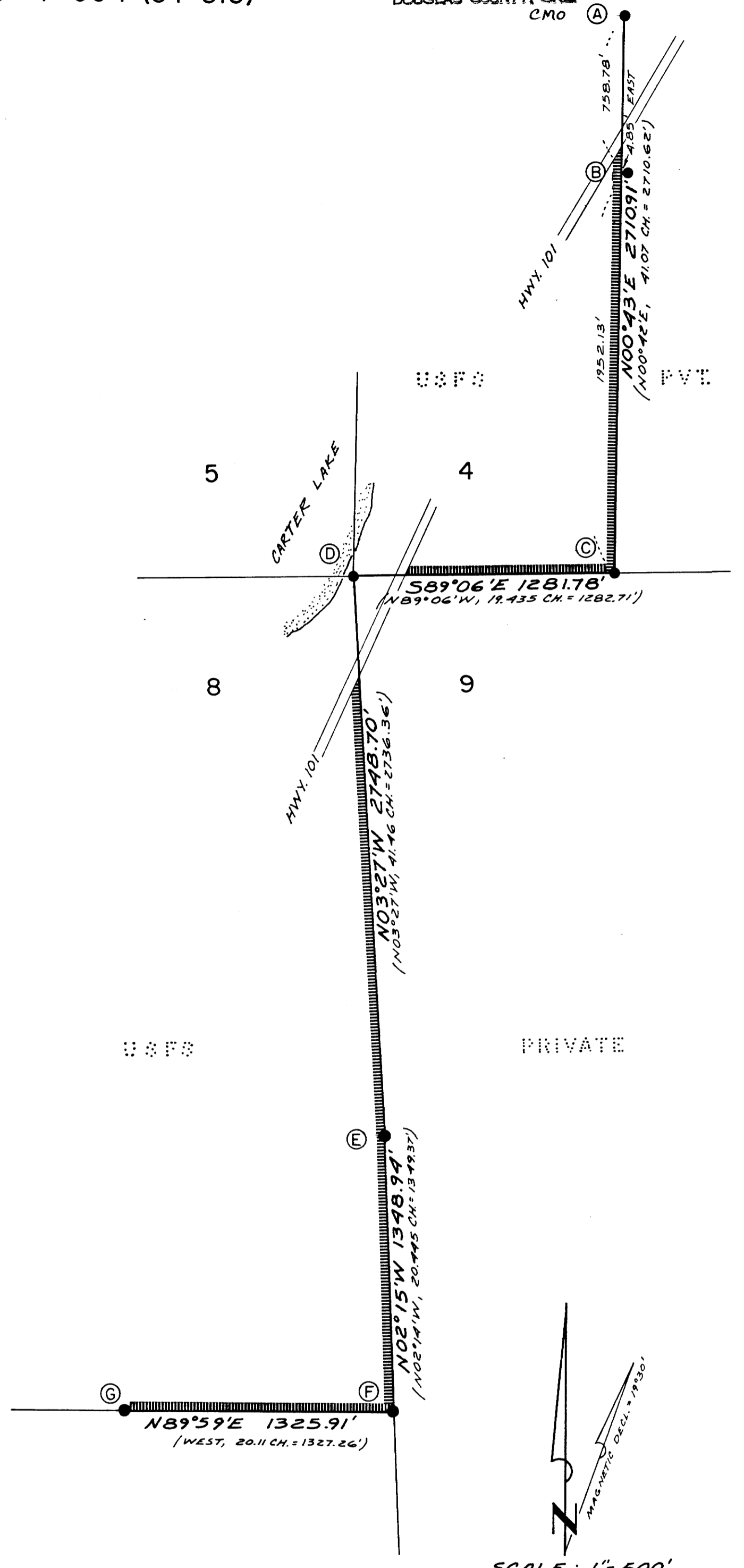
This survey was accomplished using theodolites, electronic distance meters, and steel tapes to measure random traverses between existing monuments previously set in 1982 by the Bureau of Land Management.

The base bearing was obtained from the north half of the east line of Section 8, as reported by the BLM. There is a 12.3 foot difference in the BLM distance of that line and our distance. As our closed traverse of that line closes well, and as the BLM plat of the northeast quarter of Section 8 miscloses by 12.8 feet in latitude, the assumption can be made that the BLM reported distance of 41.46 chains should be 41.64 chains, a difference of about 12 feet.

All reference monuments set in this survey are 2 1/2" x 30" aluminum pipes with 3/4" aluminum caps with magnets attached under the caps. All bearing trees have a BT tag facing the corner, a red paint band, and an appropriate sign on the back. All bearing trees marked in this survey have a brass washer, stamped PLS 909, at the center of the lower blaze. Distances and bearings are to the center of the bearing trees.

All field notes are in my field books Nos. 2 through 6.

I, William L. Shull, a registered land surveyor in the state of Oregon, hereby certify that this plat and the notes hereon are a correct representation of a survey I performed during January through March of 1985, at the request of the USDA, Forest Service, in accordance with the statutes of Oregon and with the articles of my contract.



- Legend: ( ) - Indicates data of record. [ ] - Boundary line posted with carsonite posts. ● - Existing corner found as noted. ○ - Set standard USFS aluminum monument. BLM - Bureau of Land Management. BT - Bearing Tree BO - Bearing Object USFS - United States Forest Service

REGISTERED PROFESSIONAL LAND SURVEYOR William L. Shull OREGON JULY 11, 1969 WILLIAM L. SHULL 909

AZIMUTH SURVEYING & ENGINEERING 1560 LANCASTER DR. NE, SALEM, OREGON 97301 PHONE: 364-0026 / 873-5975 JOB No: 84-36