

RECORD OF SURVEY PLAT: FLORENCE PORT CADASTRAL  
 FOR THE U.S. FOREST SERVICE, IN T. 20 S, R. 12 W, W.M.  
 DOUGLAS COUNTY, OREGON. MARCH 20, 1985  
 CONTRACT NO. P.O. 00-04 TO -4-604 (84-818)

COUNTY SURVEYORS FILE DATED  
 P.V.T. DO NOT REMOVE FROM OFFICE

BASIS OF BEARINGS  
 (588°32'W, 2669.70')  
 588°32'W 2669.72'

- (A) WITNESS POINT: SET USFS ALUMINUM MONUMENT, 6" EXPOSED.  
 BT SET:  
 12" DOUGLAS FIR, S19°E, 29.5 FEET  
 BO SET:  
 ALUMINUM NAIL IN MOST NORTHERLY 74"x74" GUARD RAIL POST,  
 N87°W, 49.5 FEET
- (B) SOUTH 1/16 CORNER SECTIONS 17-16: FOUND IRON POST WITH BRASS  
 CAP, 4" EXPOSED.  
 BT'S FOUND:  
 24" SPRUCE, S73°E, 21.1 FEET, SCRIBED "S 1/16 S16 BT"  
 (24" SPRUCE, N73°E, 32 LINKS, BLM)  
 15" SPRUCE, N87°W, 30.4 FEET, SCRIBED "S 1/16 S17 BT"  
 (15" SPRUCE, N87°W, 46 LINKS, BLM)  
 REFERENCE MONUMENT SET:  
 USFS ALUMINUM MONUMENT, S42°36'W, 45.3 FEET, 6" EXPOSED
- (C) SECTION CORNER 16-17-20-21: FOUND 1 1/2" IRON PIPE WITH BRASS  
 CAP, 12" EXPOSED.  
 BT'S FOUND:  
 18" FIR SNAG, S67°E, 46.2 FEET, SCRIBED "S21 T20S R12W"  
 (18" FIR, S67°E, 70 LINKS, GLO)  
 ROOT HOLE, S45°W, 9.9 FEET  
 (ROOT HOLE, S45°W, 15 LINKS, GLO)  
 15" FIR BEARS, S29°W, 15.8 FEET, HEALED BLAZE  
 (15" FIR, S29°W, 24 LINKS, POWELL)  
 17" SPRUCE, S70°E, 67.3 FEET, HEALED BLAZE  
 (17" SPRUCE, S70°E, 102 LINKS, BLM)  
 20" PINE, N78°W, 52.8 FEET, HEALED BLAZE  
 (20" PINE, N78°W, 80 LINKS, BLM)  
 REFERENCE MONUMENT SET:  
 USFS ALUMINUM MONUMENT, N78°36'W, 48.5 FEET.  
 NEW BT: 4" HEMLOCK, N29°E, 18.3 FEET, SCRIBED "X BT"
- (D) WITNESS CORNER: FOUND IRON POST WITH BRASS CAP, 4" EXPOSED.  
 BT'S FOUND:  
 14" FIR, S33 3/4°E, 16.2 FEET, SCRIBED "X"  
 (14" FIR, S33 3/4°E, 24 LINKS, BLM)  
 8" FIR, N32°W, 27.7 FEET, SCRIBED "X"  
 (8" FIR, N32°W, 42 LINKS, BLM)
- (E) ANGLE POINT 1, PARCEL F: FOUND IRON POST WITH BRASS CAP,  
 4" EXPOSED.  
 BT FOUND:  
 18" CEDAR, N17 3/4°E, 27.1 FEET SCRIBING VISIBLE  
 (18" CEDAR, N17 3/4°E, 41 LINKS, BLM)
- (F) ANGLE POINT 1, PARCEL E: FOUND IRON POST WITH BRASS CAP,  
 4" EXPOSED.  
 BT'S FOUND:  
 10" CEDAR, S57°W, 13.5 FEET, SCRIBING VISIBLE  
 (10" CEDAR, S57°W, 20 LINKS, BLM)  
 9" FIR BEARS N51°W, 24.1 FEET, SCRIBING VISIBLE  
 (9" FIR, N51°W, 36 LINKS, BLM)
- (G) NORTH 1/16 CORNER SECTIONS 20-21: FOUND IRON POST WITH BRASS  
 CAP, 4" EXPOSED.  
 BT'S FOUND:  
 11" HEMLOCK, N45°E, 6.6 FEET, SCRIBING VISIBLE  
 (11" HEMLOCK, N45°E, 10 LINKS, BLM)  
 11" SPRUCE, N42°W, 5.6 FEET, SCRIBING VISIBLE  
 (11" SPRUCE, N 42°W, 8.5 LINKS, BLM)  
 REFERENCE MONUMENT SET:  
 USFS ALUMINUM MONUMENT, S27°45'W, 56.5 FEET, 3" EXPOSED
- (H) ANGLE POINT 3, PARCEL E: FOUND ALUMINUM MONUMENT WITH CAP,  
 4" EXPOSED.  
 BT FOUND:  
 6" FIR, N9 3/4°E, 26.4 FEET, SCRIBING VISIBLE  
 (6" FIR, N9 3/4°E, 40 LINKS, BLM)
- (I) NORTH-EAST 1/16 CORNER SECTION 20: FOUND IRON POST WITH BRASS  
 CAP, 6" EXPOSED.  
 BT'S FOUND:  
 5" SPRUCE, S57 3/4°W, 16.2 FEET, SCRIBING VISIBLE  
 (5" SPRUCE, S57 3/4°W, 24 LINKS, BLM)  
 7" SPRUCE, N35°W, 21.8 FEET, SCRIBING VISIBLE  
 (7" SPRUCE, N35°W, 33 LINKS, BLM)  
 REFERENCE MONUMENT SET:  
 USFS ALUMINUM MONUMENT, N78°20'E, 47.0 FEET, 4" EXPOSED
- (J) ANGLE POINT 4, PARCEL E: FOUND IRON POST WITH BRASS CAP,  
 4" EXPOSED.  
 BT'S FOUND:  
 13" SPRUCE, N27°E, 19.1 FEET, SCRIBING VISIBLE  
 (13" SPRUCE, N27°E, 29 LINKS, BLM)  
 15" SPRUCE, N56°W, 46.2 FEET, SCRIBING VISIBLE  
 (15" SPRUCE, N 56°W, 70 LINKS, BLM)
- (K) ANGLE POINT 5, PARCEL E: FOUND IRON POST WITH BRASS CAP,  
 4" EXPOSED.  
 BT'S FOUND:  
 9" FIR, S49°E, 9.9 FEET, SCRIBING VISIBLE  
 (9" FIR, S49°E, 15 LINKS, BLM)  
 13" SPRUCE, S20°W, 20.8 FEET, SCRIBING VISIBLE  
 (13" SPRUCE, S20°W, 31 LINKS, BLM)
- (L) ANGLE POINT 6, PARCEL E: FOUND IRON POST WITH BRASS CAP,  
 3" EXPOSED.  
 BT'S FOUND:  
 8" SPRUCE, N40°E, 18.5 FEET, SCRIBING VISIBLE  
 (8" SPRUCE, N 40° E, 28 LINKS, BLM)  
 9" SPRUCE, S26°E, 12.9 FEET, SCRIBING VISIBLE  
 (9" SPRUCE, S26°E, 19 LINKS, BLM)
- (M) 1/4 CORNER SECTIONS 20-21: FOUND 1" IRON PIPE WITH BRASS CAP,  
 LOOSE, 12" EXPOSED (1 MOUNDED SOIL AND COMPACTED AROUND IT).  
 BT'S FOUND:  
 40" SPRUCE STUMP, N32°E, 9.8 FEET, BLAZE VISIBLE  
 (60" SPRUCE STUMP, N21°E, 17 LINKS, BLM)  
 48" FIR STUMP, S76°W, 6.5 FEET, BLAZE, NO SCRIBING VISIBLE  
 (48" FIR STUMP, S73°W, 8 LINKS, BLM)  
 18" FIR, S88°E, 29.9 FEET, HEALED BLAZE  
 (15" FIR, S87°E, 45 LINKS, POWELL)  
 22" SPRUCE, S60°W, 20.4 FEET, HEALED BLAZE  
 (21" SPRUCE, S59°W, 31 LINKS, POWELL)  
 REFERENCE MONUMENT SET:  
 24" USFS ALUMINUM MONUMENT, N88°39'W, 49.2 FEET, 3" EXPOSED
- (N) ANGLE POINT 10, PARCEL A: FOUND ALUMINUM PIPE WITH ALUMINUM  
 CAP, 4" EXPOSED.  
 NO BT'S
- (O) ANGLE POINT 9, PARCEL A: FOUND ALUMINUM PIPE WITH ALUMINUM  
 CAP, 4" EXPOSED.  
 NO BT'S
- (P) ANGLE POINT 5, PARCEL A: FOUND ALUMINUM PIPE WITH ALUMINUM  
 CAP, 4" EXPOSED.  
 NO BT'S
- (Q) ANGLE POINT 4, PARCEL A: FOUND ALUMINUM PIPE WITH ALUMINUM  
 CAP, 4" EXPOSED.  
 NO BT'S
- (R) ANGLE POINT 3, PARCEL A: FOUND ALUMINUM PIPE WITH ALUMINUM  
 CAP, 4" EXPOSED.  
 NO BT'S
- (S) CENTER-SOUTH 1/16 CORNER, SECTION 17: FOUND ALUMINUM PIPE  
 WITH ALUMINUM CAP, 6" EXPOSED.  
 BT'S FOUND:  
 17" SPRUCE, N23°E, 45.2 FEET, SCRIBING VISIBLE  
 (17" SPRUCE, N23°E, 68 LINKS, BLM)  
 25" SPRUCE, S52°W, 24.1 FEET SCRIBING VISIBLE  
 (25" SPRUCE, S52°W, 36 LINKS, BLM)

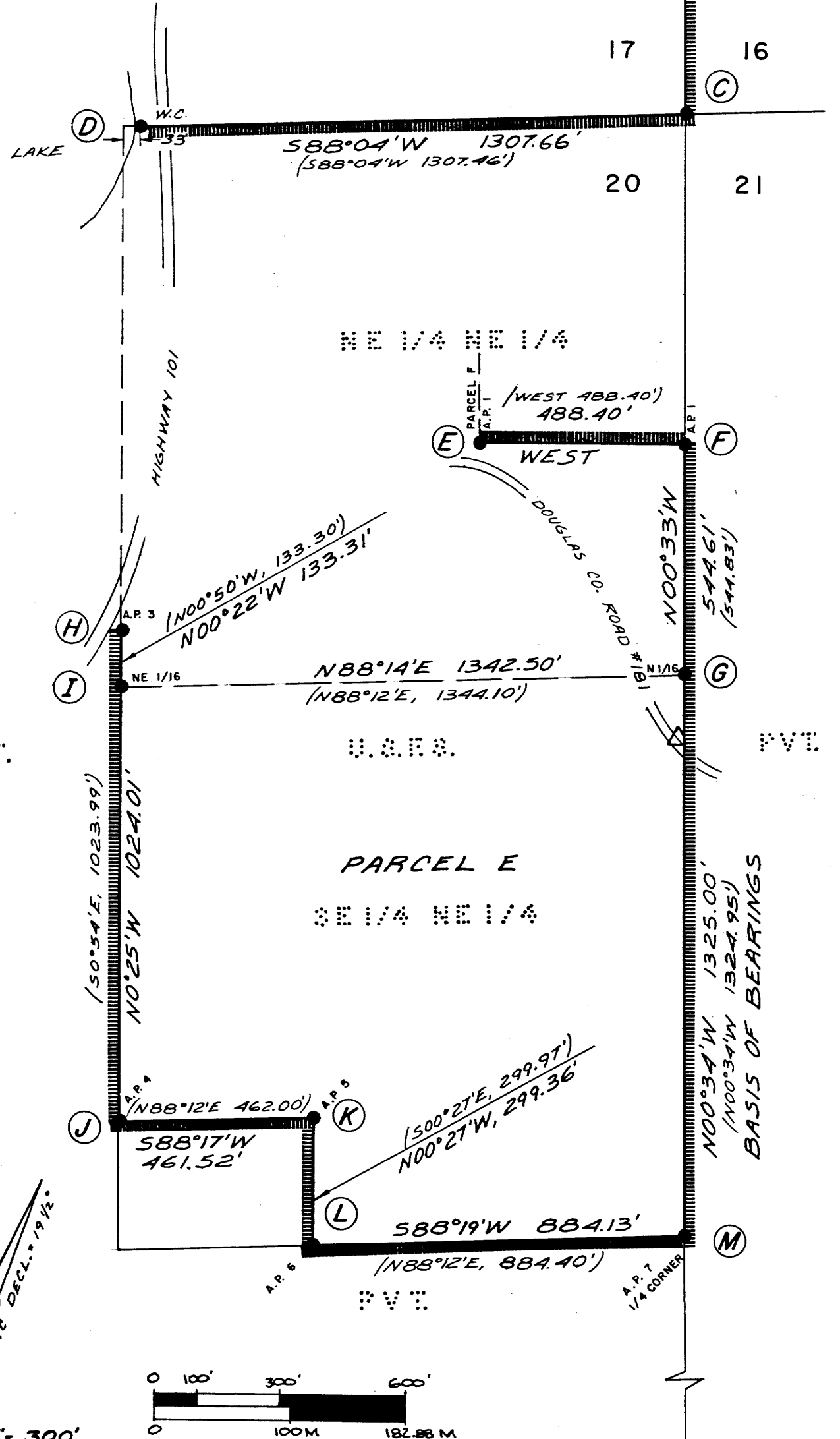
FILED CMO  
 RECEIVED 7/8

JUN 4 1985

COUNTY SURVEYOR  
 DOUGLAS COUNTY, ORE  
 CMO

U.S.F.S.

SE 1/4 SE 1/4



SCALE: 1" = 300'

LEGEND

- △ - Set standard USFS road crossing sign.
- ( ) - Indicates data of record.
- - Boundary line posted with carsonite posts.
- - Existing corner found as noted.
- - Set standard USFS aluminum monument.
- BLM - Bureau of Land Management.
- BT - Bearing Tree
- BO - Bearing Object
- USFS - United States Forest Service

NOTES

The purpose of this survey is to post the lines between property administered by the Oregon Dunes National Recreation Area or the U.S. Forest Service and any other property, and to maintain certain corners previously monumented or re-monumented by the Bureau of Land Management.

This survey was accomplished using theodolites, electronic distance meters, and steel tapes to measure random traverses between existing monuments previously set in 1982 by the Bureau of Land Management. Base bearings were obtained from lines as reported by the BLM.

All reference monuments set in this survey are 2 1/2" x 30" aluminum pipes with 3/4" aluminum caps with magnets attached under the caps. All bearing trees have a BT tag facing the corner, a red paint band, and an appropriate sign on the back. All bearing trees marked in this survey have a brass washer, stamped PLS 909, at the center of the lower blaze. Distances and bearings are to the center of the bearing trees.

All field notes are in my field books Nos. 1 through 6.

I, William L. Shull, a registered land surveyor in the state of Oregon, hereby certify that this plat and the notes hereon are a correct representation of a survey I performed during January through March of 1985, at the request of the USDA, Forest Service, in accordance with the statutes of Oregon and with the articles of my contract.

REGISTERED  
 PROFESSIONAL  
 LAND SURVEYOR  
 William L. Shull  
 OREGON  
 JULY 11, 1953  
 WILLIAM L. SHULL  
 909

AZIMUTH SURVEYING & ENGINEERING  
 1560 LANCASTER DR. NE, SALEM, OREGON 97301  
 PHONE: 364-0026 / 873-5975 JOB No: 84-36