

SURVEY TO MONUMENT THE NORTH AND EAST LINES OF LOT 13, PLAT "A", MILLER'S DILLARD SUBDIVISION NW 1/4 SEC 28 T28S R6W WM

FOR: MIKE WINTERS

BY: AA SURVEYING SERVICE INC. P.O. BOX 130, ROSEBURG, OR.

MAY 1985

SCALE: 1" = 100'

COUNTY SURVEYORS FILE DATA
DO NOT REMOVE FROM OFFICE

CMO
CMO

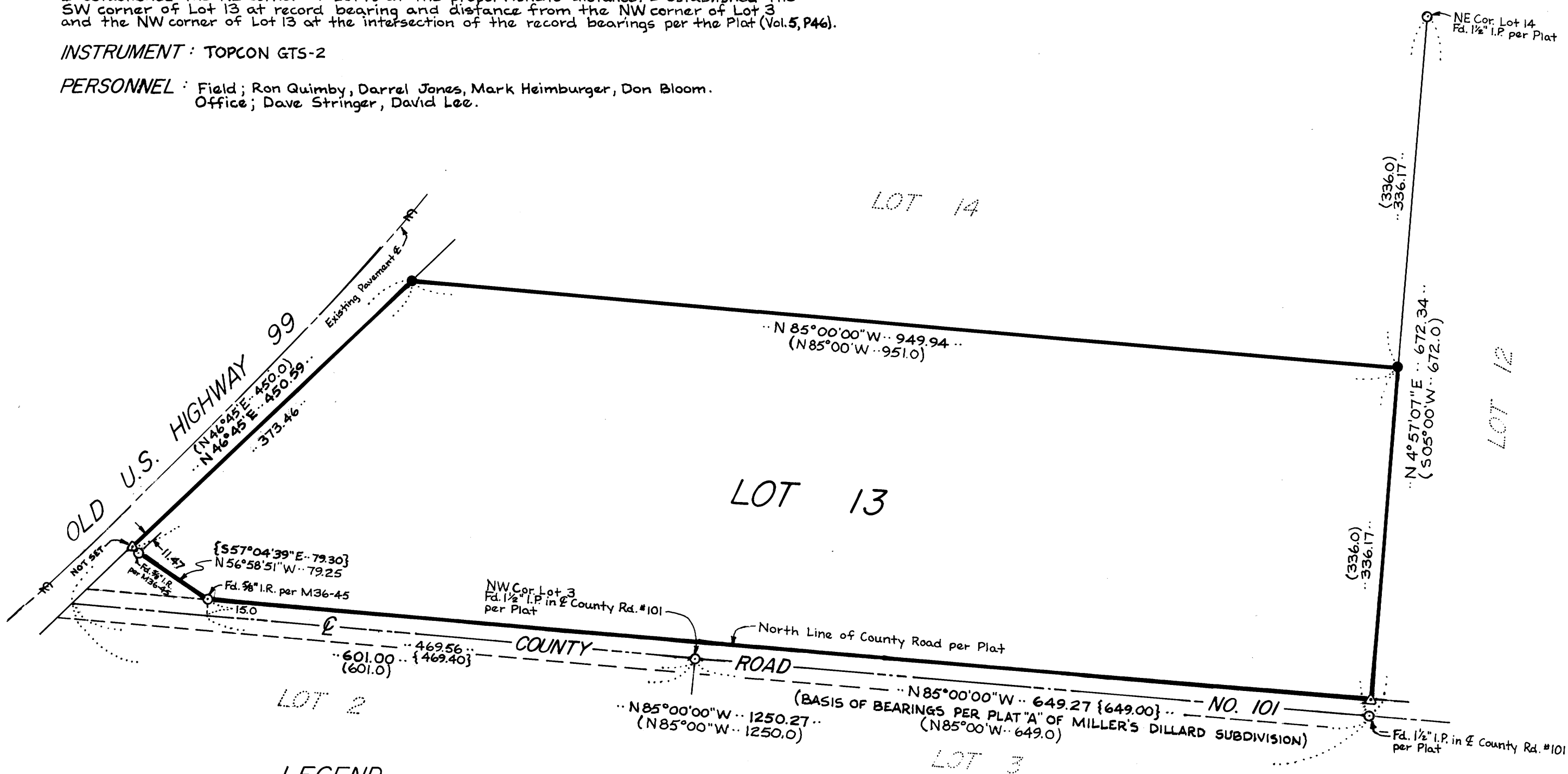
CMO

NARRATIVE

PROCEDURE: I found the monuments so shown on this map and tied each with a closed random traverse. I accepted the 1/2" Iron Pipes found at the SE corner of Lot 13, the NE corner of Lot 14, and the NW corner of Lot 3 as original monuments. I established the NE corner of Lot 13 at the proportionate distance. I established the SW corner of Lot 13 at record bearing and distance from the NW corner of Lot 3 and the NW corner of Lot 13 at the intersection of the record bearings per the Plat (Vol. 5, P46).

INSTRUMENT: TOPCON GTS-2

PERSONNEL: Field; Ron Quimby, Darrel Jones, Mark Heimbarger, Don Bloom.
Office; Dave Stringer, David Lee.



LEGEND

- Denotes mon. found, as shown hereon
- Denotes 3/8"x30" I.R. Set w/ plastic cap stamped "AA SURVEYING SERVICE INC."
- () Record per Plat "A", Miller's Dillard Subdivision (Vol. 5, P46)
- { } Record per M36-45
- Plat Denotes "Plat "A", Miller's Dillard Subdivision"
- △ Denotes Not Set

REGISTERED
PROFESSIONAL
LAND SURVEYOR

Eric Allen

OREGON
FINDING A SURVEYOR