

COUNTY SURVEYORS FILE DATA
DO NOT REMOVE FROM OFFICE

A SURVEY FOR FRED DAYTON, ET AL, IN THE NE 1/4 OF
SECTION 13, TOWNSHIP 27 SOUTH, RANGE 6 WEST, W.M.
AND IN THE JEREMIAH HUNTLEY D.L.C. #56

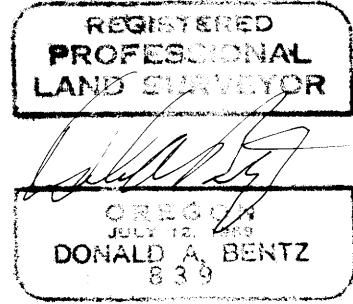
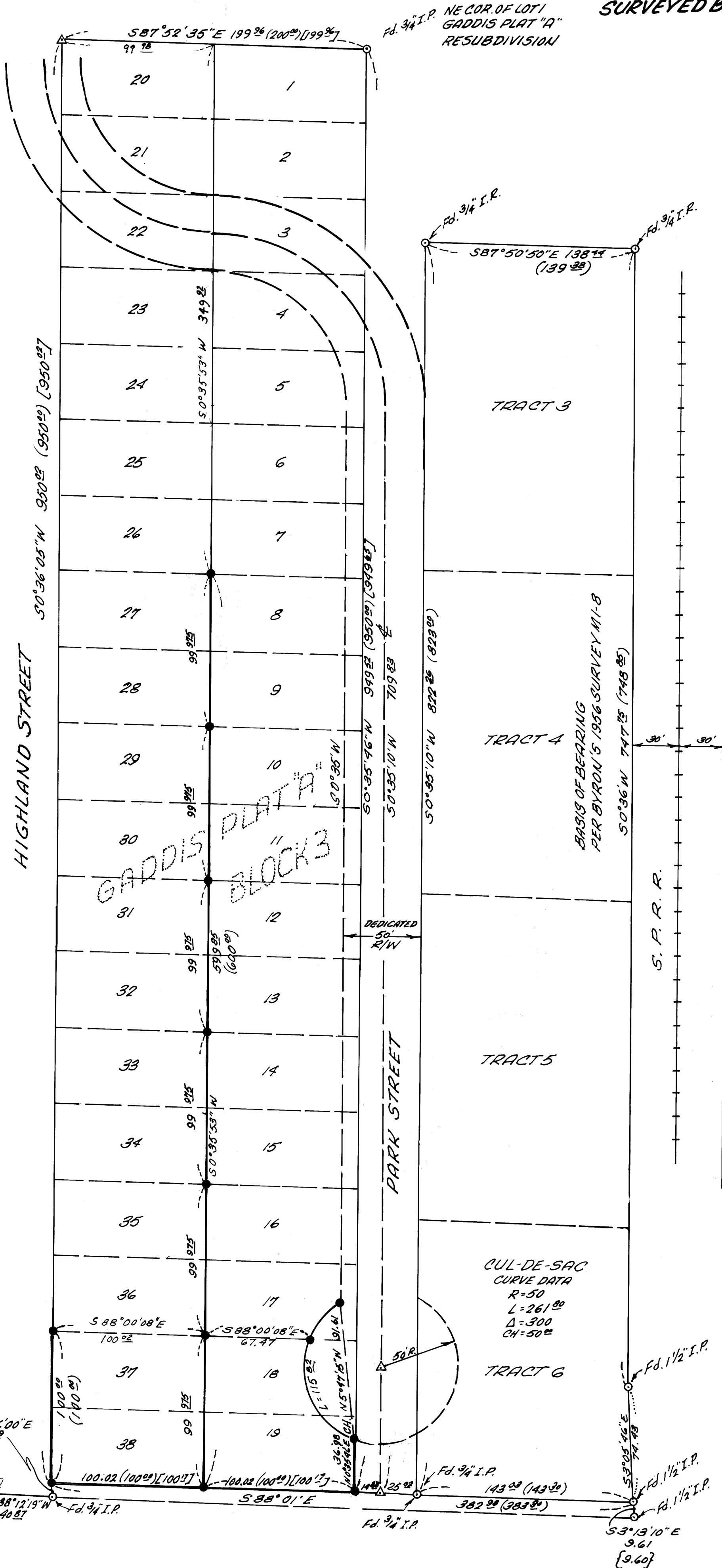
FILED CMO
RECEIVED

MAY 20 1985

SURVEYED BY: DONALD A. BENTZ, INC.
P.O. BOX 901
WINCHESTER, OR. 97495

COUNTY SURVEYOR
DOUGLAS COUNTY, ORE.
CMO

VACATED SCOTT STREET



NARRATIVE:

THE PURPOSE OF THIS SURVEY IS
TO SET MONUMENTS AT THE POSITIONS
REQUESTED BY FRED DAYTON ET AL.

THE NE & SE CORNERS OF BLOCK 3, RESUB. OF
GADDIS PLAT "A" WERE FOUND. THE
SOUTHWEST CORNER WAS MONUMENT-
ED BY PROJECTING THE LINE BE-
TWEEN THE SE CORNER OF TRACT 6
AND THE SE CORNER OF LOT 19, BLOCK 3
WESTERLY AND INTERSECTING A LINE
COMING NORTHERLY FROM A FOUND 3/4"
I.P. TO THE SOUTH OF SW CORNER OF
LOT 38, BLOCK 3.

NOTE: SURVEY M1-8 SHOWING DUPLI-
CATE LINE OF PIN 9.6 SOUTH OF THE
SOUTH LINE OF GADDIS PLAT "A".

THE NORTHWEST CORNER OF
BLOCK 3 WAS COMPUTED FROM A DIS-
TANCE-DISTANCE INTERSECTION USING
RECORD DISTANCES ON M20-11 BY
ROBERT G. LECKLIDER IN 1961.

THE REMAINING MONUMENTS
WERE SET AT PROPORTIONED L. OF COR-
NERS OR ON THE NEW DEDICATED R/W.

NOTE: () RECORD PER SUBDIVISION PLAT
[] RECORD PER M20-11
{ } RECORD PER M1-8

- △ COMPUTED POINT
- FOUND AS NOTED
- SET 3/8" 30" I.P. PLASTIC CAP
MHD. BENTZ SURVEY, INC.

SCALE: 1"=50'
APRIL, 1985