

COUNTY SURVEYORS FILE DATA
DO NOT REMOVE FROM OFFICE

A SURVEY FOR VERN LIESINGER IN THE NE 1/4 OF SECTION 11, TOWNSHIP 26 SOUTH, RANGE 3 WEST, W.M.

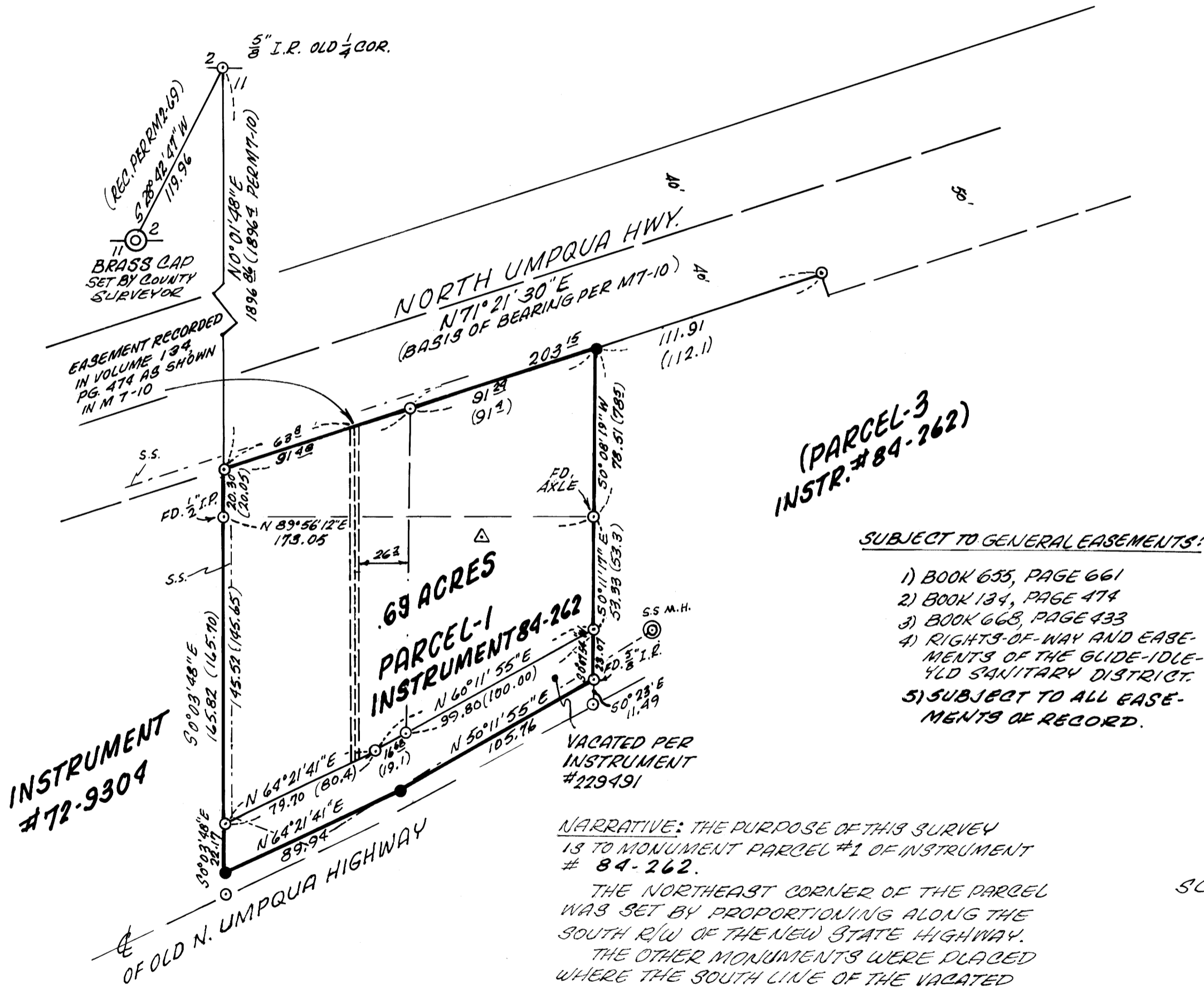
FILED CMO
RECEIVED *FL*

MAY 20 1985

COUNTY SURVEYOR
DOUGLAS COUNTY, ORE.
CMO

SURVEYED BY:
DONALD A. BENTZ
P.O. BOX 901
WINCHESTER, ORE.
97495

- LEGEND:**
- - FD. 3/4" I.R. UNLESS OTHERWISE NOTED
 - - SET 5/8" x 30" I.R./PLASTIC CAP MARKED "BENTZ SURVEY, INC."
 - () - RECORD PER MT-10 UNLESS OTHERWISE NOTED.



REGISTERED
PROFESSIONAL
LAND SURVEYOR

Donald A. Bentz

OREGON
JULY 12, 1983
DONALD A. BENTZ
839