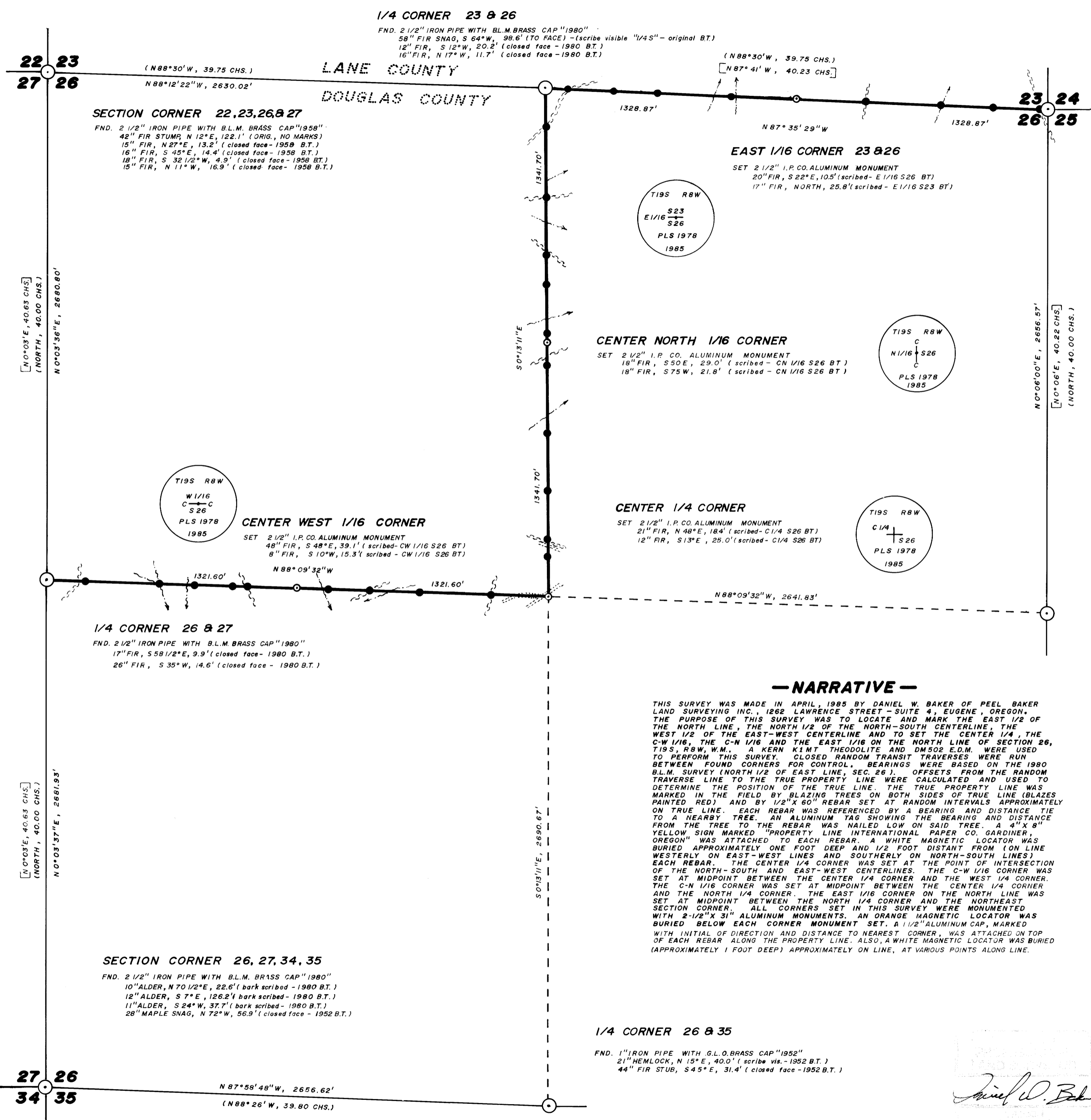


CMO

CMO

C.S. FILE 58/289
Map File M 98-55



BASIS OF BEARING: NORTH 1/2 OF EAST LINE AS PER 1980 B.L.M. SURVEY

SCALE: 1" = 400'

FOR BEARING TREES SET IN THIS SURVEY, DISTANCES WERE MEASURED TO A 60 PENNY SPIKE DRIVEN LOW IN THE SIDE OF THE TREE, BEARINGS WERE MAGNETIC, VAR. 20°

- CORNERS FOUND
- CORNERS SET THIS SURVEY
- 1/2" X 60" REBAR
- BLAZED PROPERTY LINE (BLAZES PAINTED RED)
- () 1891 G.L.O. BEARING AND DISTANCE
- [] 1980 B.L.M. BEARING AND DISTANCE

— LOCATION OF 1/2" X 60" REBAR —

POINT NO.	DISTANCE	DIRECTION TO NEAREST CORNER
SECTION CORNER 23, 24, 25, 26		
26-20	30'	EAST
26-22	288'	EAST
26-25	553'	EAST
26-27	367'	WEST
EAST 1/16 CORNER 23 & 26		
26-32	346'	EAST
26-33	589'	WEST
26-34	360'	WEST
26-36	119'	WEST
1/4 CORNER 23 & 26		
26-39	205'	NORTH
26-42	579'	NORTH
26-43	504'	SOUTH
26-44	303'	SOUTH
26-45	45'	SOUTH
CENTER NORTH 1/16 CORNER		
26-47	116'	NORTH
26-48	479'	NORTH
26-50	555'	SOUTH
26-52	299'	SOUTH
26-53	206'	SOUTH
CENTER 1/4 CORNER		
26-56	300'	EAST
26-58	548'	WEST
26-59	379'	WEST
26-60	162'	WEST
CENTER WEST 1/16 CORNER		
26-62	256'	EAST
26-63	337'	EAST
26-64	537'	EAST
26-65	593'	WEST
26-66	199'	WEST
1/4 CORNER 26 & 27		

— NARRATIVE —

THIS SURVEY WAS MADE IN APRIL, 1985 BY DANIEL W. BAKER OF PEEL BAKER LAND SURVEYING INC., 1262 LAWRENCE STREET - SUITE 4, EUGENE, OREGON. THE PURPOSE OF THIS SURVEY WAS TO LOCATE AND MARK THE EAST 1/2 OF THE NORTH LINE, THE NORTH 1/2 OF THE NORTH-SOUTH CENTERLINE, THE WEST 1/2 OF THE EAST-WEST CENTERLINE AND TO SET THE CENTER 1/4, THE C-W 1/16, THE C-N 1/16 AND THE EAST 1/16 ON THE NORTH LINE OF SECTION 26, T19S, R8W, W.M., A KERN K1M THEODOLITE AND DMS02 E.D.M. WERE USED TO PERFORM THIS SURVEY. CLOSED RANDOM TRANSIT TRAVERSES WERE RUN BETWEEN FOUND CORNERS FOR CONTROL. BEARINGS WERE BASED ON THE 1980 B.L.M. SURVEY (NORTH 1/2 OF EAST LINE, SEC. 26). OFFSETS FROM THE RANDOM TRAVERSE LINE TO THE TRUE PROPERTY LINE WERE CALCULATED AND USED TO DETERMINE THE POSITION OF THE TRUE LINE. THE TRUE PROPERTY LINE WAS MARKED IN THE FIELD BY BLAZING TREES ON BOTH SIDES OF TRUE LINE (BLAZES PAINTED RED) AND BY 1/2" X 60" REBAR SET AT RANDOM INTERVALS APPROXIMATELY ON TRUE LINE. EACH REBAR WAS REFERENCED BY A BEARING AND DISTANCE TIE TO A NEARBY TREE. AN ALUMINUM TAG SHOWING THE BEARING AND DISTANCE FROM THE TREE TO THE REBAR WAS NAILED LOW ON SAID TREE. A 4" X 8" YELLOW SIGN MARKED "PROPERTY LINE INTERNATIONAL PAPER CO. GARDNER, OREGON" WAS ATTACHED TO EACH REBAR. A WHITE MAGNETIC LOCATOR WAS BURIED APPROXIMATELY ONE FOOT DEEP AND 1/2 FOOT DISTANT FROM (ON LINE WESTERLY ON EAST-WEST LINES AND SOUTHERLY ON NORTH-SOUTH LINES) EACH REBAR. THE CENTER 1/4 CORNER WAS SET AT THE POINT OF INTERSECTION OF THE NORTH-SOUTH AND EAST-WEST CENTERLINES. THE C-W 1/16 CORNER WAS SET AT MIDPOINT BETWEEN THE CENTER 1/4 CORNER AND THE WEST 1/4 CORNER. THE C-N 1/16 CORNER WAS SET AT MIDPOINT BETWEEN THE CENTER 1/4 CORNER AND THE NORTH 1/4 CORNER. THE EAST 1/16 CORNER ON THE NORTH LINE WAS SET AT MIDPOINT BETWEEN THE NORTH 1/4 CORNER AND THE NORTHEAST SECTION CORNER. ALL CORNERS SET IN THIS SURVEY WERE MONUMENTED WITH 2 1/2" X 3" ALUMINUM MONUMENTS. AN ORANGE MAGNETIC LOCATOR WAS BURIED BELOW EACH CORNER MONUMENT SET. A 1/2" ALUMINUM CAP, MARKED WITH INITIAL OF DIRECTION AND DISTANCE TO NEAREST CORNER, WAS ATTACHED ON TOP OF EACH REBAR ALONG THE PROPERTY LINE. ALSO, A WHITE MAGNETIC LOCATOR WAS BURIED (APPROXIMATELY 1 FOOT DEEP) APPROXIMATELY ON LINE, AT VARIOUS POINTS ALONG LINE.

Daniel W. Baker

SURVEY IN NE 1/4 & W 1/2 SECTION 26, T19S, R8W, W.M. DOUGLAS COUNTY, OREGON
FOR
INTERNATIONAL PAPER COMPANY
BY
PEEL BAKER LAND SURVEYING INC.
APRIL 30, 1985

COUNTY SURVEYORS FILE DATA
DO NOT REMOVE FROM OFFICE

C.S. FILE 58/289
Map File M 98-55