

SURVEY TO SET LOT CORNERS LOT 5, WECKS TRACT, D.L.C. 42

FILED CMO
RECEIVED *AK*

APR 19 1985

COUNTY SURVEYOR
DOUGLAS COUNTY, ORE.
CMO

SITUATED IN THE SW. 1/4 SEC. 33, T.29 S. R.5 W. W.M.

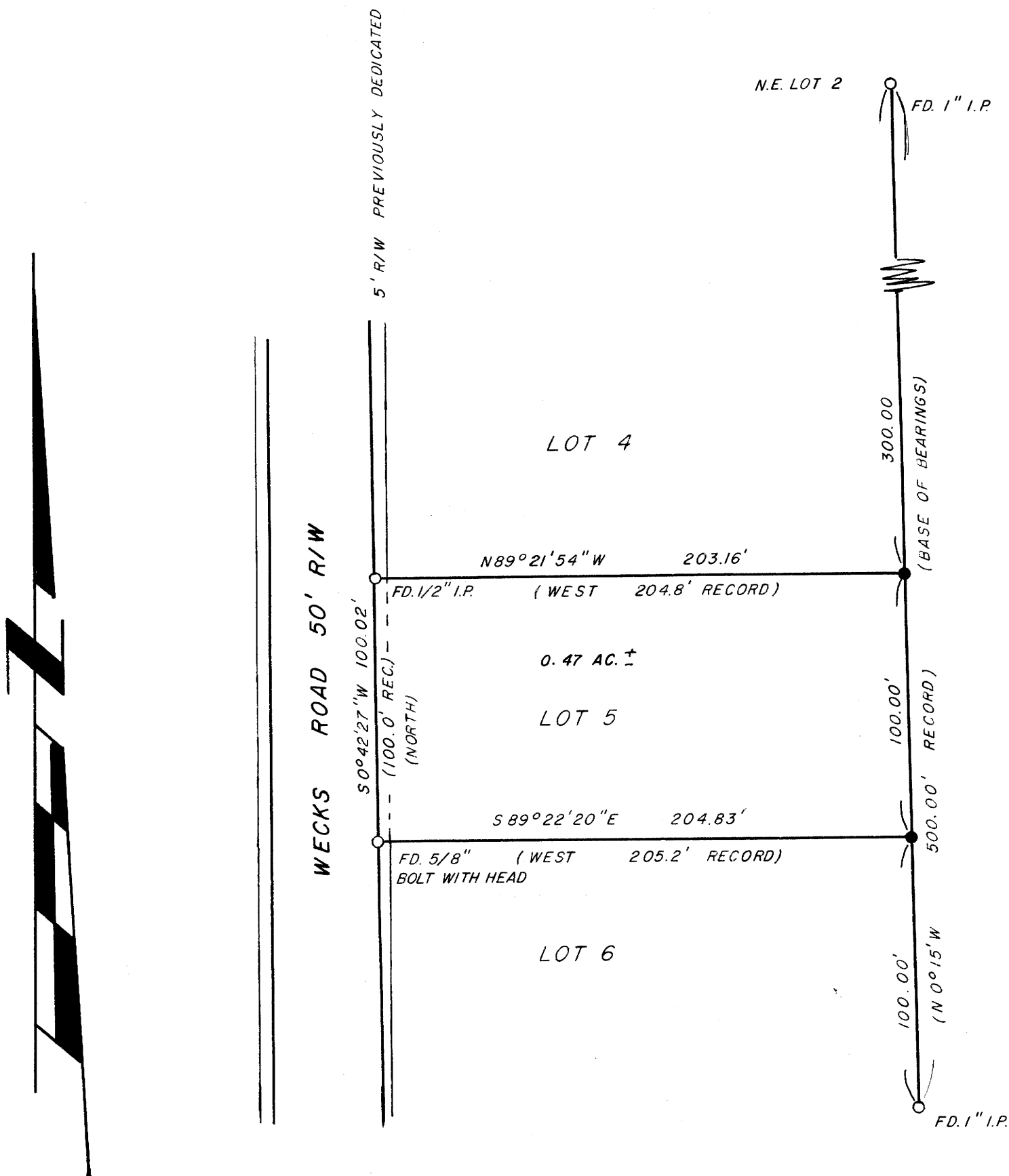
FOR - PHYLLIS M. CLARKSON

COUNTY SURVEYORS FILE DAD
DO NOT REMOVE FROM OFFICE

BY - AA SURVEYING SERVICE INC.

SCALE 1 = 50'

APRIL 1985



PURPOSE:

To re-establish lot corners for Lot 5 Wecks Tract. Found existing corners as shown, set missing corners by single proportion measurement between found corners.

○ FOUND AS SHOWN

● SET 5/8" X 30" WITH PLASTIC CAP MKD. "AA SURVEYING INC."

EQUIPMENT USED:

Electronic Metal Locater and Topcon GTS-2

BY:

AA Surveying Services, Inc.
P. O. Box 130
Roseburg, OR 97470

REGISTERED
PROFESSIONAL
LAND SURVEYOR

Herman A. Pieske

OREGON
JULY 14, 1978
HERMAN A. PIESKE
1651