

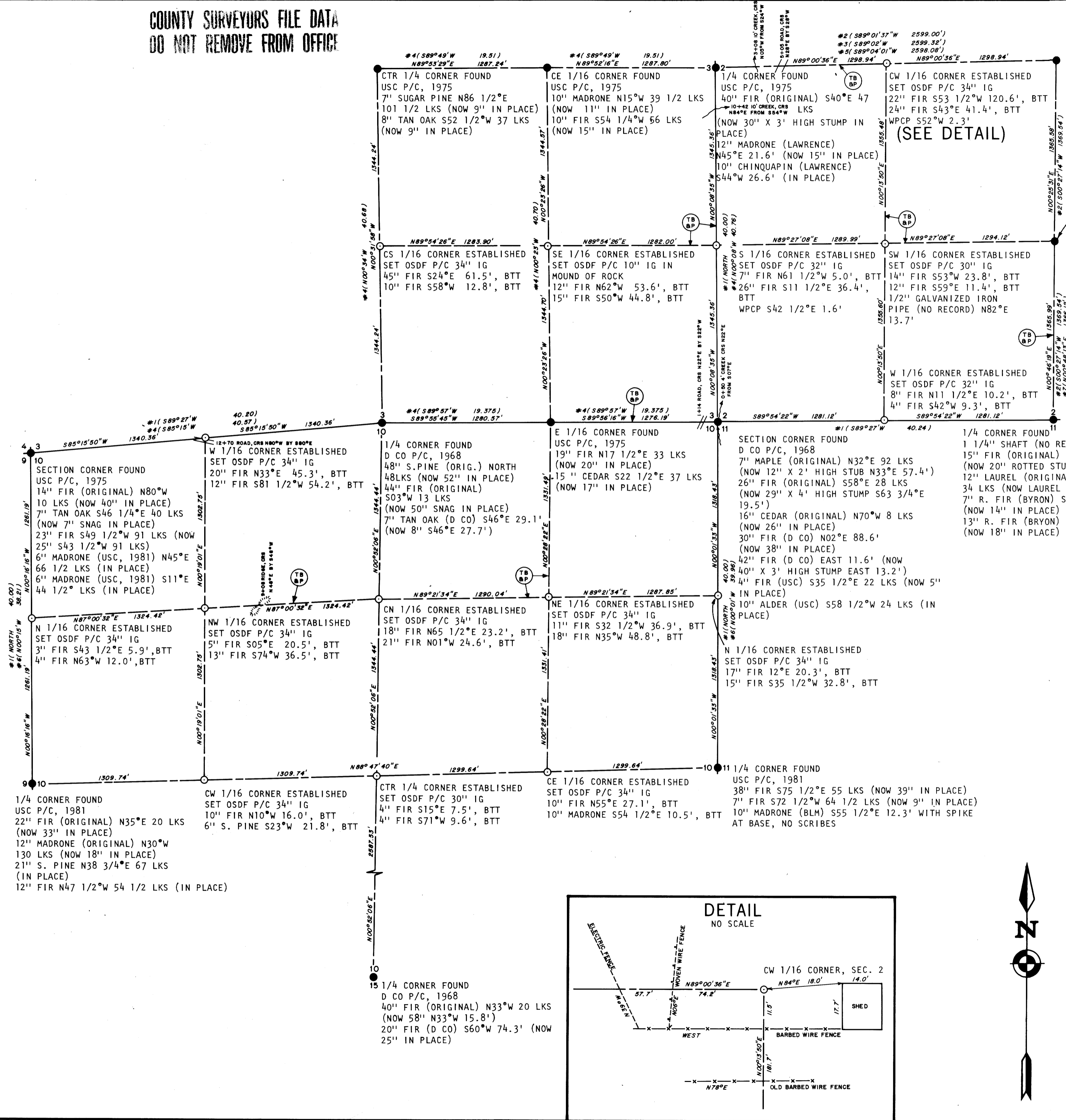
COUNTY SURVEYORS FILE DATA
DO NOT REMOVE FROM OFFICE

FILED CMO
RECEIVED

APR 10 1985

COUNTY SURVEYOR
DOUGLAS COUNTY, ORE.
CMO

MAP FILE M.28-47



CTR 1/4 CORNER FOUND
5/8" IRON ROD (MASTERS, 1971)
6" MADRONE (MASTERS) N36°W
2.90' (NOW 7" IN PLACE)
4" MADRONE (MASTERS) N67°E
34.84' (NOW 7" IN PLACE)
4" MADRONE (MASTERS)
S42 3/4°E 73.25' (NOW 7"
IN PLACE)
POWER POLE S26 1/4°W
77.92' (IN PLACE)

CS 1/16 CORNER FOUND
5/8" IRON ROD (MASTERS, 1971)
7" FIR (MASTERS) S66°W 11.03'
(NOW 11" IN PLACE)
11" FIR (MASTERS) S62°E 9.73'
(NOW 16" IN PLACE)

SURVEY NARRATIVE TO COMPLY WITH PARAGRAPH 209.250
OREGON REVISED STATUTES

LEGEND

- OSDF P/C = OREGON STATE DEPARTMENT OF FORESTRY 1 1/2"X36" ALUMINUM PIPE WITH 3 3/4" ALUMINUM CAP AND MAGNETIC INSERT
- USC P/C = UNITED STATES CADASTRAL 2 1/2" IRON PIPE WITH 3" BRASS CAP
- D CO P/C = DOUGLAS COUNTY 1" IRON PIPE WITH 2 1/2" BRASS CAP
- = MONUMENTS SET
- = MONUMENTS FOUND
- WPCP = 4"X4"X72" WHITE PAINTED CEDAR POST
- IG = IN GROUND
- CRS = COURSE
- BTT = BEARING TREE TAG
- ⊙ = TRUE BLAZED AND POSTED
- #1 () = RECORD BEARINGS AND DISTANCES IN CHAINS (W.H. BYARS, 1882, CONTRACT NO. 420)
- #2 () = RECORD BEARINGS AND DISTANCES (C.E. MASTERS, 1971)
- #3 () = RECORD BEARINGS AND DISTANCES (B.A. SHANER, 1974)
- #4 () = RECORD BEARINGS AND DISTANCES IN CHAINS (USC, 1975)
- #5 () = RECORD BEARINGS AND DISTANCES (M.H. HULL, 1975)
- #6 () = RECORD BEARINGS AND DISTANCES IN CHAINS (USC, 1981)
- #7 () = RECORD BEARINGS AND DISTANCES (D.J. STRINGER, 1983)
- ESTABLISHED = NEW CORNER SET

BASIS OF BEARING

SOLAR OBSERVATION

PURPOSE

TO SEPARATE STATE FOREST LANDS AND PRIVATE LANDS LOCATED IN SECTIONS 2, 3 AND 10, TOWNSHIP 33 SOUTH, RANGE 7 WEST, WILLAMETTE MERIDIAN.

PROCEDURE

A RANDOM TRAVERSE WAS USED TO CONNECT THE CONTROLLING CORNERS GOVERNING THE SUBDIVISION OF SECTIONS 2, 3 AND 10, TOWNSHIP 33 SOUTH, RANGE 7 WEST, WILLAMETTE MERIDIAN. THESE SECTIONS WERE SUBDIVIDED USING THE PROCEDURES AS OUTLINED IN THE "MANUAL OF INSTRUCTIONS FOR THE SURVEY OF THE PUBLIC LANDS OF THE U.S." BEARING TO ACCESSORIES FOR ESTABLISHED CORNERS WERE TAKEN WITH A STAFF COMPASS SET AT 18° EAST MAGNETIC DECLINATION. NEW CORNERS AND ACCESSORIES MARKED ACCORDING TO "MANUAL OF INSTRUCTIONS FOR THE SURVEY OF THE PUBLIC LANDS OF THE U.S." DISTANCE MEASURED TO BEARING TREE FACE. FOR DETAILED REPORT ON FOUND CORNERS SEE COUNTY RECORDS.

SURVEY FOR:
STATE OF OREGON - DEPARTMENT OF FORESTRY
SECTIONS 2, 3, & 10, T.33S., R.7W., W.M.

DOUGLAS COUNTY, OREGON
THEODOLITE AND EDM SURVEY BY: D. SMITH, J. MCINTOSH
A. KOREIVA AND D. TAYLOR
DRAWN BY: J. MCINTOSH
MARCH 5, 1985
SCALE: 1" = 500'

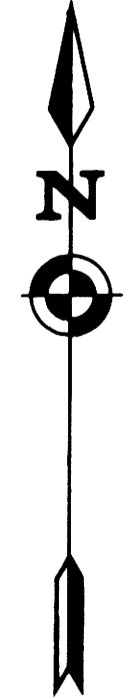
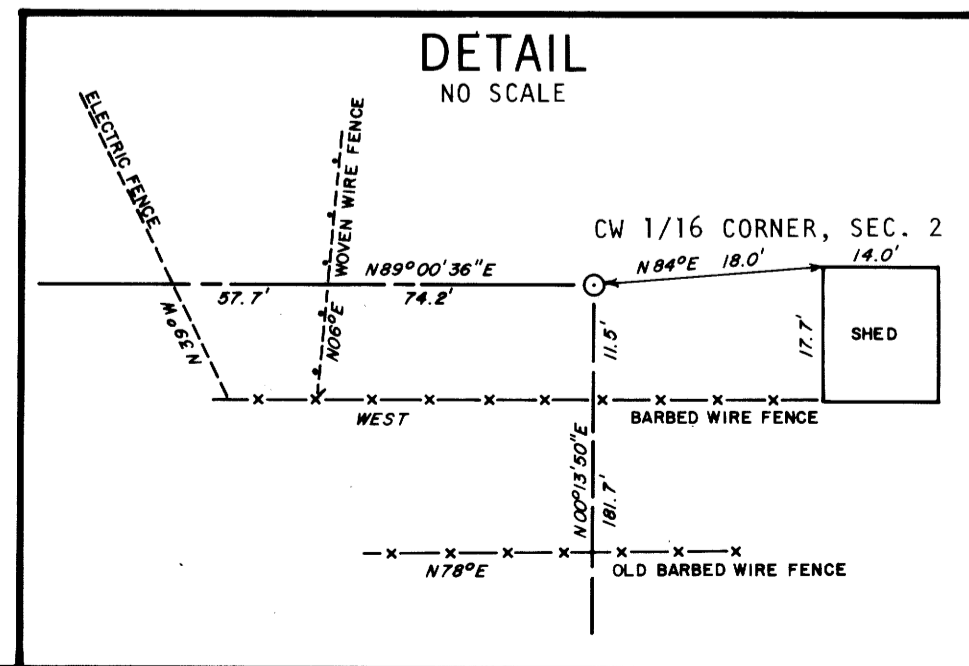
SURVEYED BY:

REGISTERED PROFESSIONAL LAND SURVEYOR

Lloyd D. Smith

OREGON
MAY 22 1977
LLOYD D. SMITH
1101

LLOYD D. SMITH
300 5TH ST. BAY PARK
COOS BAY, OREGON



MAP FILE M.28-47

B-264

B-264
OSDF 3-16-85