

JUNTY SURVEYORS FILE DATA  
NOT REMOVE FROM OFFICE

# Resurvey And Subdivision of Section 4, T 31 S, R 7 W, W. M., Oregon

For Roseburg Lumber Company

February 12, 1985

Scale: 1" = 400'

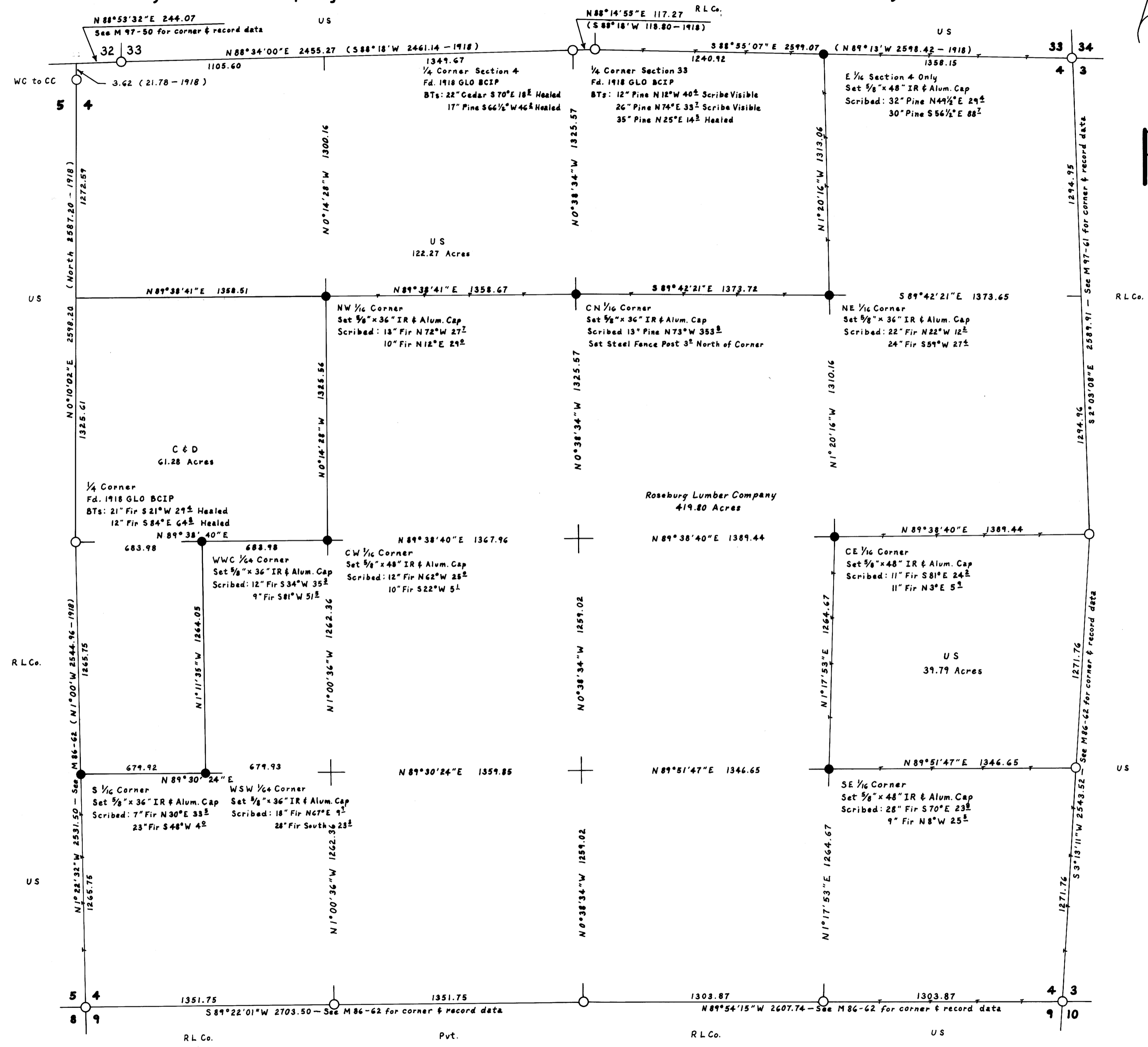
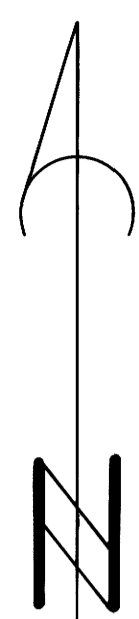
FILED CMO  
RECEIVED CMO

MAR 18 1985

COUNTY SURVEYOR  
DOUGLAS COUNTY, OREGON  
CMO

## Legend

- Monument Found as Noted
- Set 5/8" IR & Alum. Cap Marked "LS 498"
- Section or Property Line
- ( ) Line Referenced to Aluminum Tags Record Data



I ran a closed traverse in Section 4 using a Nikon NTD 4 total station. I achieved a precision of 1:35,266 and adjusted the traverse by the Crandall method. I determined the location of the N 1/4 Corner to Sections 4 and 5 by proportion based on the distance between the 1/4 Corner and the Witness Corner to the Closing Corner as shown on the official plat of the 1918 Survey. I set the other corners by standard subdivision procedure based on the location of the existing monuments.

Howard W. Johnstone P.O. Box 1088 Roseburg, Oregon

REGISTERED  
PROFESSIONAL  
LAND SURVEYOR

*Howard W. Johnstone*

OREGON  
MAY 13, 1960  
HOWARD W. JOHNSTONE  
498

MAP FILE M98-34

MAP FILE M98-34