

SURVEY TO LOCATE PROPERTY CORNERS

LOT 12 BLOCK 1 SUNNYSLOPE - NW 1/4 SEC. 11 T.28S.R.6W.W.M.
FOR: PACIFIC NW BELL
BY: A A SURVEYING SERVICE INC.

PO BOX 130, ROSEBURG, OR. 97470

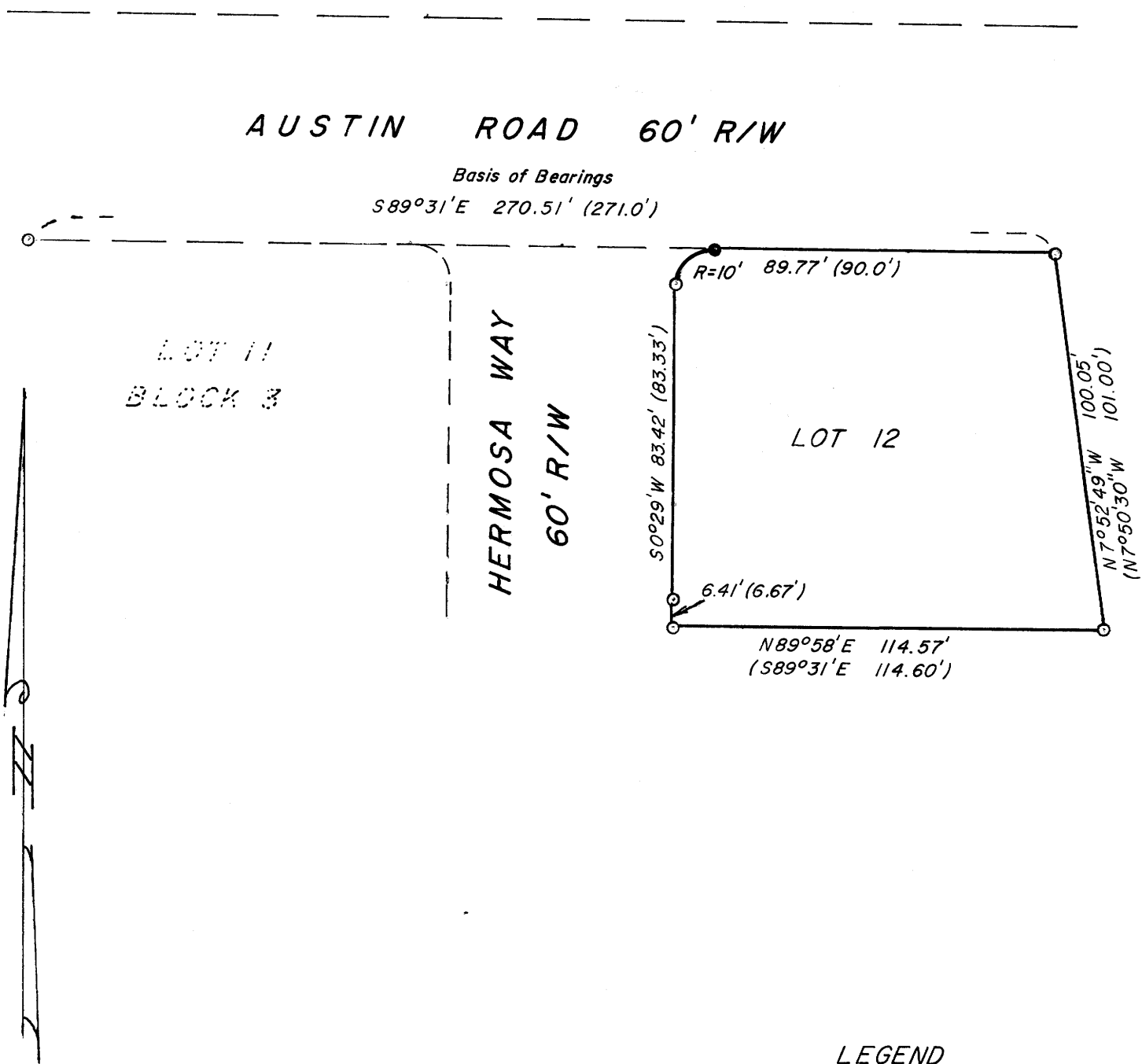
MARCH 1985

SCALE: 1" = 40'

FILED ^{CMO}
RECEIVED *JS*

MAR 13 1985

COUNTY SURVEYOR
DOUGLAS COUNTY, ORE.
CMO



LEGEND

- — Found 3/4" I.R.
- — Set 5/8" I.R. w/ plastic cap 30" long marked "A A Surveying Service Inc"
- () Plat record

NARRATIVE

PURPOSE:

To locate the monuments defining Lot 12 Block 1.

PROCEDURE:

I located and measured between the found monuments shown on the annexed map. The monument I set on the North line of Lot 12 was set at the proportioned distance between monuments found on the North boundary of the Plat of "SUNNYSLOPE".

REGISTERED
PROFESSIONAL
LAND SURVEYOR

Eugene A. Bloom

OREGON
MAY 13, 1980
EUGENE A. BLOOM
492

COUNTY SURVEYORS FILE DATA
DO NOT REMOVE FROM OFFICE