

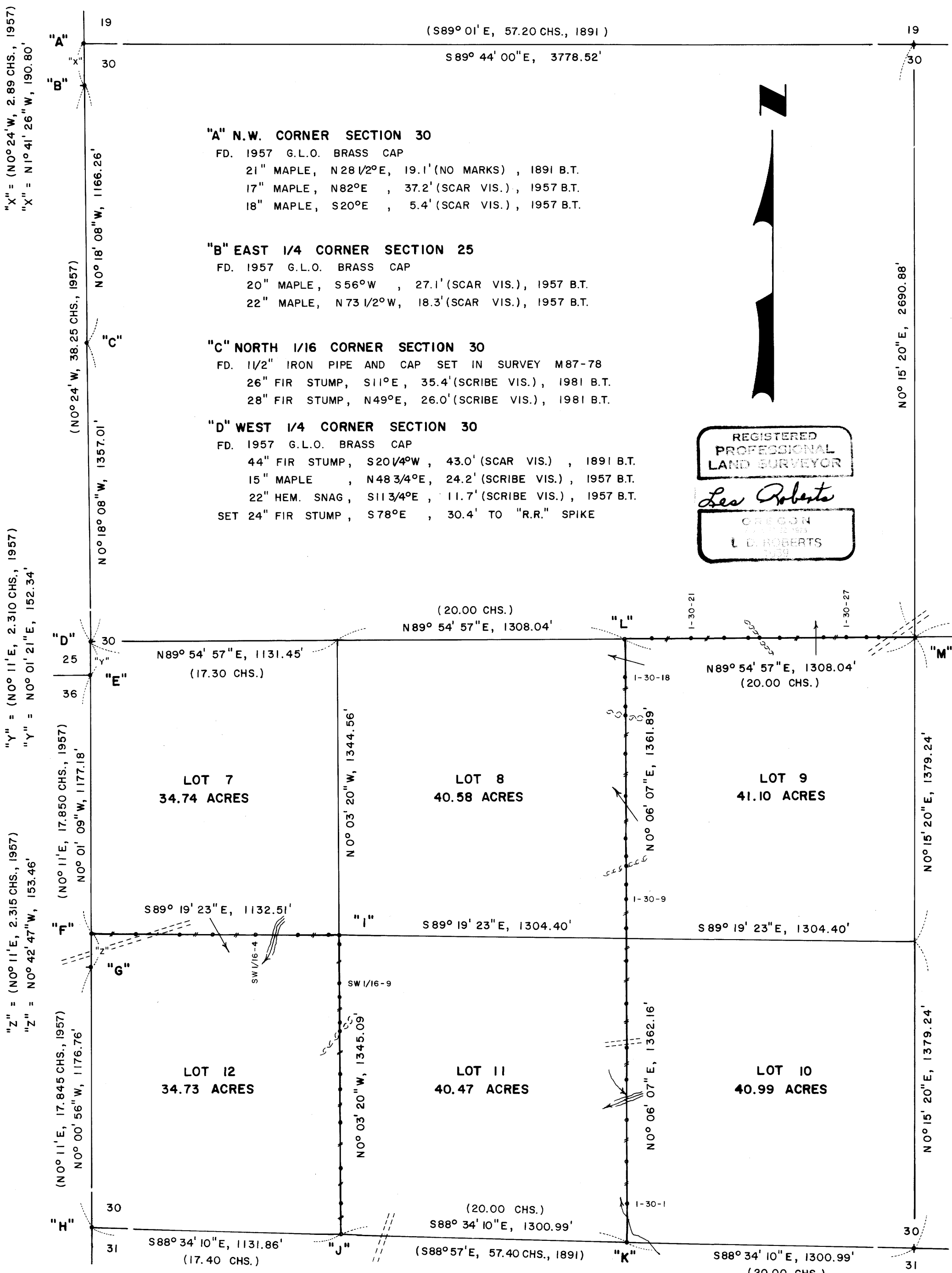
COUNTY SURVEYORS TILL DATE
DO NOT REMOVE FROM OFFICE

FILED CMO
RECEIVED 1/2

FEB 6 1985

COUNTY SURVEYOR
DOUGLAS COUNTY, OREGON
CMO

C.S. FILE NO. 58/293
Map. Tab. M 98-19



NORTH 1/4 CORNER SECTION 30
FD. 1 1/4" x 18" THREADED BOLT WITH NUT, BURIED 6", AND
1" x 26" IRON PIPE. SEE C.S. FILE NO. 55-26
24" ROTTED CEDAR STUMP, S72°E, 33.0' (NO MARKS), 1891 B.T.
48" DOUBLE FIR STUMP, N06°E, 23.0' (NO MARKS), 1891 B.T.
40" DOWNED FIR, S56°E, 64.0' (NO SPIKE), 1967 B.T.
54" FIR STUMP, N78°E, 41.2' (TO SPIKE), 1967 B.T.
SET 2 1/2" x 30" ALUMINUM PIPE AND CAP. BURIED PURPLE M.M.
UNDER PIPE. REF. MON., "R.R." SPIKE IN ROOT COLLAR, N10E, 17.3'

"I" S.W. 1/16-80 CORNER
SET 2 1/2" x 30" ALUMINUM PIPE AND CAP
BURIED PURPLE M.M. UNDER PIPE
10" MAPLE, N42°W, 5.8' (SCRIBED/PAINTED)
22" FIR, N53°E, 29.1' (SCRIBED/PAINTED)

"L" C.W. 1/16 CORNER
SET 2 1/2" x 30" ALUMINUM PIPE AND CAP
BURIED PURPLE M.M. UNDER PIPE
14" FIR, N47°E, 12.9' (SCRIBED/PAINTED)
15" FIR, S42°E, 8.9' (SCRIBED/PAINTED)

"J" WEST 1/16-80 CORNER
SET 2 1/2" x 30" ALUMINUM PIPE AND CAP
BURIED PURPLE M.M. UNDER PIPE
18" MAPLE, S11°W, 18.8' (SCRIBED/PAINTED)
46" FIR, N53°W, 5.5' (SCRIBED/PAINTED)

"M" CENTER 1/4 CORNER
SET 2 1/2" x 30" ALUMINUM PIPE AND CAP
BURIED PURPLE M.M. UNDER PIPE
1 1/2" IRON PIPE BEARS N77°40'15"W, 8.98'
18" FIR, N30°W, 19.9' (SCRIBED/PAINTED)
54" FIR, N89°E, 53.8' (SCRIBED/PAINTED)

"K" WEST 1/16 CORNER
SET 2 1/2" x 30" ALUMINUM PIPE AND CAP
BURIED PURPLE M.M. UNDER PIPE
10" FIR, N78°W, 81.2' (SCRIBED/PAINTED)
36" FIR STUMP, S40°W, 31.4' TO R.R. SPIKE

"N" C.E. 1/16 CORNER
SET 2 1/2" x 30" ALUMINUM PIPE AND CAP
BURIED PURPLE M.M. UNDER PIPE
6" FIR, S34°E, 0.6' (SCRIBED/PAINTED)
38" FIR STUMP, N12°E, 48.7' (SCRIBED/PAINTED)

SOUTH 1/4 CORNER SECTION 30
FD. 18" FIR STUMP, N86°E, 9.2' (NO MARKS), 1891 B.T.
26" CEDAR STP., S65°W, 14.5' (NEG. SCRIBE), 1891 B.T.
SET 2 1/2" x 30" ALUMINUM PIPE AND CAP
BURIED PURPLE M.M. UNDER PIPE
38" FIR STUMP, S72°E, 29.7' TO "R.R." SPIKE

EAST 1/4 CORNER SECTION 30
FD. 1980 B.L.M. BRASS CAP
48" FIR, N64°E, 26.5' (SCRIBE VIS.), 1891 B.T.
6" FIR, S51°W, 22.5' (SCAR VIS.), 1980 B.T.

NARRATIVE

I, LES ROBERTS, REGISTERED PROFESSIONAL LAND SURVEYOR DO CERTIFY THAT I HAVE CORRECTLY SURVEYED SECTION 30 IN ACCORDANCE TO THE 1973 MANUAL OF INSTRUCTIONS FOR THE SURVEY OF THE PUBLIC LANDS OF THE UNITED STATES. THE CENTER 1/4 CORNER WAS SET AT THE INTERSECTION OF THE N-S AND E-W CENTERLINES. THE C.E. 1/16 CORNER WAS SET HALFWAY BETWEEN THE CENTER 1/4 CORNER AND THE EAST 1/4 CORNER. THE POSITIONS FOR THE C.W. 1/16 AND THE C.W. 1/16-80 CORNERS WERE DETERMINED BY PROPORTIONATE MEASURE USING 20.00 CHAINS, 40.00 CHAINS AND 57.30 CHAINS RESPECTIVELY AS DETERMINED FROM THE 1891 PLAT. THE POSITIONS FOR THE WEST 1/16 AND THE WEST 1/16-80 CORNERS, ALONG THE SOUTH LINE OF SECTION 30, WERE DETERMINED BY PROPORTIONATE MEASURE USING 20.00 CHAINS, 40.00 CHAINS AND 57.40 CHAINS RESPECTIVELY AS DETERMINED FROM THE 1891 PLAT. THE S.W. 1/16-80 CORNER WAS SET AT THE INTERSECTION OF THE E-W AND N-S CENTERLINES OF THE S.W. 1/4 AS SHOWN. A CLOSED MEANDER TRANSIT AND E.D.M. TRAVERSE WAS RUN BETWEEN ALL FOUND CORNERS AND USED FOR CONTROL. A CLOSED MEANDER TRANSIT AND E.D.M. TRAVERSE WAS RUN ALONG ALL BLAZED AND POSTED PROPERTY LINES AS SHOWN. OFFSETS WERE COMPUTED FROM THIS MEANDER TRAVERSE TO THE TRUE PROPERTY LINE. PROPERTY LINES WERE MARKED WITH RED PAINTED BLAZES, 1/2" x 60" IRON RODS AND RED RIBBON. A WHITE TREE FARM SIGN AND A YELLOW PROPERTY LINE SIGN, WITH P.L.S. NO. 1039 AND DISTANCE TO NEAREST CORNER STAMPED UPON, IS ATTACHED TO EACH IRON ROD. RODS ARE REFERENCED BY TWO 3" x 3" ALUMINUM TAGS NAILED TO NEARBY TREES. TAGS NOTE BEARING AND DISTANCE FROM TREE TO IRON ROD.

LEGEND

- CORNERS FOUND AND USED FOR CONTROL
- CORNERS SET, 2 1/2" x 30" ALUMINUM PIPE AND CAP. CAPS STAMPED S-T-R, DATE AND P.L.S. NO. 1039.
- LINES MARKED AND BLAZED THIS SURVEY
- () DATA OF RECORD, 1891 AND 1957 G.L.O. SURVEYS
- BASIS OF BEARING, COUNTY SURVEY M87-78 WEST LINE SECTION 30
DISTANCE TO B.T.'S ARE CENTER MEASURE OR AS NOTED
- ALL NEW B.T.'S ARE SCRIBED AND HAVE A BRASS WASHER STAMPED "P.L.S. 1039" NAILED TO LOWER BLAZE. SCRIBED BLAZES ARE PAINTED RED.
- (M.M.) INDICATES LOCATION OF BURIED MAGNETIC MARKERS. MARKERS ARE FLUORESCENT ORANGE IN COLOR AND ARE BURIED, 12" TO 18", BESIDE EACH IRON ROD.
- SCALE 1" = 400'

LOCATION OF IRON RODS

Location	Distance	Direction	Marker
SI/16			
SW 1/16-1	200'	EAST	(M.M.)
SW 1/16-2	401'	EAST	(M.M.)
SW 1/16-3	548'	EAST	(M.M.)
SW 1/16-4	743'	EAST	(M.M.)
SW 1/16-5	939'	EAST	(M.M.)
SW 1/16-6	1080'	EAST	(M.M.)
SW 1/16-80	1132'	EAST	(M.M.)
SW 1/16-8	38'	SOUTH	(M.M.)
SW 1/16-9	215'	SOUTH	(M.M.)
SW 1/16-10	285'	SOUTH	(M.M.)
SW 1/16-11	392'	SOUTH	(M.M.)
SW 1/16-12	436'	SOUTH	(M.M.)
SW 1/16-13	626'	SOUTH	(M.M.)
SW 1/16-14	695'	SOUTH	(M.M.)
SW 1/16-15	852'	SOUTH	(M.M.)
SW 1/16-16	1053'	SOUTH	(M.M.)
SW 1/16-17	1213'	SOUTH	(M.M.)
W/16-80	1345'	SOUTH	(M.M.)
W/16			
I-30-1	174'	NORTH	(M.M.)
I-30-2	362'	NORTH	(M.M.)
I-30-3	551'	NORTH	(M.M.)
I-30-4	733'	NORTH	(M.M.)
I-30-5	883'	NORTH	(M.M.)
I-30-6	1080'	NORTH	(M.M.)
I-30-7	1276'	NORTH	(M.M.)
I-30-8	1421'	NORTH	(M.M.)
I-30-9	1558'	NORTH	(M.M.)
I-30-10	1619'	NORTH	(M.M.)
I-30-11	1706'	NORTH	(M.M.)
I-30-12	1745'	NORTH	(M.M.)
I-30-13	1829'	NORTH	(M.M.)
I-30-14	2020'	NORTH	(M.M.)
I-30-15	2213'	NORTH	(M.M.)
I-30-16	2391'	NORTH	(M.M.)
I-30-17	2428'	NORTH	(M.M.)
I-30-18	2561'	NORTH	(M.M.)
CW 1/16	2724'	NORTH	(M.M.)
I-30-20	118'	EAST	(M.M.)
I-30-21	297'	EAST	(M.M.)
I-30-22	448'	EAST	(M.M.)
I-30-23	566'	EAST	(M.M.)
I-30-24	609'	EAST	(M.M.)
I-30-25	696'	EAST	(M.M.)
I-30-26	898'	EAST	(M.M.)
I-30-27	1002'	EAST	(M.M.)
I-30-28	1094'	EAST	(M.M.)
I-30-29	1145'	EAST	(M.M.)
C 1/4	1308'	EAST	(M.M.)

SURVEY OF
SECTION 30, T19S, R8W, W.M.
DOUGLAS COUNTY, OREGON
FOR
INTERNATIONAL PAPER COMPANY
BY
ROBERTS SURVEYING INC.
29 WEST 29TH STREET
EUGENE, OREGON 97405
JANUARY 15, 1985

"X" = (N0°24'W, 2.89 CHS., 1957)
"X" = (N1°41'26"W, 190.80')
"Y" = (N0°11'E, 2.310 CHS., 1957)
"Y" = (N0°01'21"E, 152.34')
"Z" = (N0°11'E, 2.315 CHS., 1957)
"Z" = (N0°42'47"W, 153.46')
"A" = (N0°00'56"W, 1176.76')
"A" = (N0°11'E, 17.845 CHS., 1957)
"B" = (N0°18'08"W, 1166.26')
"B" = (N0°01'09"W, 1177.18')
"C" = (N0°24'W, 38.25 CHS., 1957)
"C" = (N0°18'08"W, 1357.01')
"D" = (N0°03'20"W, 1344.56')
"D" = (N0°01'E, 17.850 CHS., 1957)
"E" = (N0°00'56"W, 1176.76')
"E" = (N0°11'E, 17.845 CHS., 1957)
"F" = (N0°00'56"W, 1176.76')
"F" = (N0°11'E, 17.845 CHS., 1957)
"G" = (N0°00'56"W, 1176.76')
"G" = (N0°11'E, 17.845 CHS., 1957)
"H" = (N0°00'56"W, 1176.76')
"H" = (N0°11'E, 17.845 CHS., 1957)
"I" = (N0°00'56"W, 1176.76')
"I" = (N0°11'E, 17.845 CHS., 1957)
"J" = (N0°00'56"W, 1176.76')
"J" = (N0°11'E, 17.845 CHS., 1957)
"K" = (N0°00'56"W, 1176.76')
"K" = (N0°11'E, 17.845 CHS., 1957)
"L" = (N0°00'56"W, 1176.76')
"L" = (N0°11'E, 17.845 CHS., 1957)
"M" = (N0°00'56"W, 1176.76')
"M" = (N0°11'E, 17.845 CHS., 1957)
"N" = (N0°00'56"W, 1176.76')
"N" = (N0°11'E, 17.845 CHS., 1957)
"O" = (N0°00'56"W, 1176.76')
"O" = (N0°11'E, 17.845 CHS., 1957)
"P" = (N0°00'56"W, 1176.76')
"P" = (N0°11'E, 17.845 CHS., 1957)
"Q" = (N0°00'56"W, 1176.76')
"Q" = (N0°11'E, 17.845 CHS., 1957)
"R" = (N0°00'56"W, 1176.76')
"R" = (N0°11'E, 17.845 CHS., 1957)
"S" = (N0°00'56"W, 1176.76')
"S" = (N0°11'E, 17.845 CHS., 1957)
"T" = (N0°00'56"W, 1176.76')
"T" = (N0°11'E, 17.845 CHS., 1957)
"U" = (N0°00'56"W, 1176.76')
"U" = (N0°11'E, 17.845 CHS., 1957)
"V" = (N0°00'56"W, 1176.76')
"V" = (N0°11'E, 17.845 CHS., 1957)
"W" = (N0°00'56"W, 1176.76')
"W" = (N0°11'E, 17.845 CHS., 1957)
"X" = (N0°00'56"W, 1176.76')
"X" = (N0°11'E, 17.845 CHS., 1957)
"Y" = (N0°00'56"W, 1176.76')
"Y" = (N0°11'E, 17.845 CHS., 1957)
"Z" = (N0°00'56"W, 1176.76')
"Z" = (N0°11'E, 17.845 CHS., 1957)