

FINAL PARTITION & PROPERTY SURVEY FOR SOUTHERN PACIFIC INDUSTRIAL DEVELOPMENT CO.

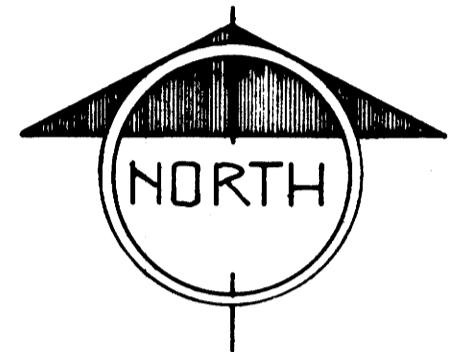
520 S.W. YAMHILL STREET PORTLAND OR 97204

A PORTION OF LAND WITHIN O&C RAILROAD RIGHT OF WAY AS PLATTED IN THE RAILROAD ADDITION TO ROSEBURG VOL.2 PG.10

N.E. 1/4 SEC. 24, T. 27 S. R. 6 W. W.M. ROSEBURG, DOUGLAS COUNTY, OREGON ZONED: MEDIUM INDUSTRIAL

FILED RECEIVED JAN 25 1985 COUNTY SURVEYOR DOUGLAS COUNTY, ORE

COUNTY SURVEYORS FILE DATA DO NOT REMOVE FROM OFFICE



SCALE 1" = 50'

LEGEND

- FOUND PK. NAILS - CITY MONUMENTS
SET PK. NAILS
FOUND AS NOTED
SET 3/8" x 30" CONE PLASTIC YELLOW CAP MARKED RANDALL PLATS

REFERENCE

- MAP FILE 21-62
C.S. FILE # 51-197
MAP FILE 2040
PLAT OF RAILROAD ADD. TO ROSEBURG

NARRATIVE

THIS SURVEY, REQUESTED BY THE OWNER, SOUTHERN PACIFIC INDUSTRIAL DEVELOPMENT CO., DEFINES & MONUMENTS THE CORNERS OF A TWO PARCEL MINOR PARTITION BOUNDED ON THE WEST BY SPRUCE ST., ON THE NORTH BY OAK ST., ON THE EAST BY A LINE 679 FT. FROM & PARALLEL TO THE E. OF THE O&C R.R. AS PLATTED IN RAILROAD ADD. TO ROSEBURG IN VOL. 2, PG. 10 DOUGLAS CO. OR. PLAT RECD.; & BOUNDED ON THE SOUTH BY A LINE BEARING S 49° 56' E 833 FT. FROM A POINT ON THE E. LINE OF SPRUCE ST. THAT IS 216.31 FT. N 40° 04' E FROM ITS INTERSECTION WITH THE NORTH LINE OF LANE ST. IN ROSEBURG OR.

REGISTERED PROFESSIONAL LAND SURVEYOR

Clyde A. Randall

OREGON 1947 CLYDE A. RANDALL 205

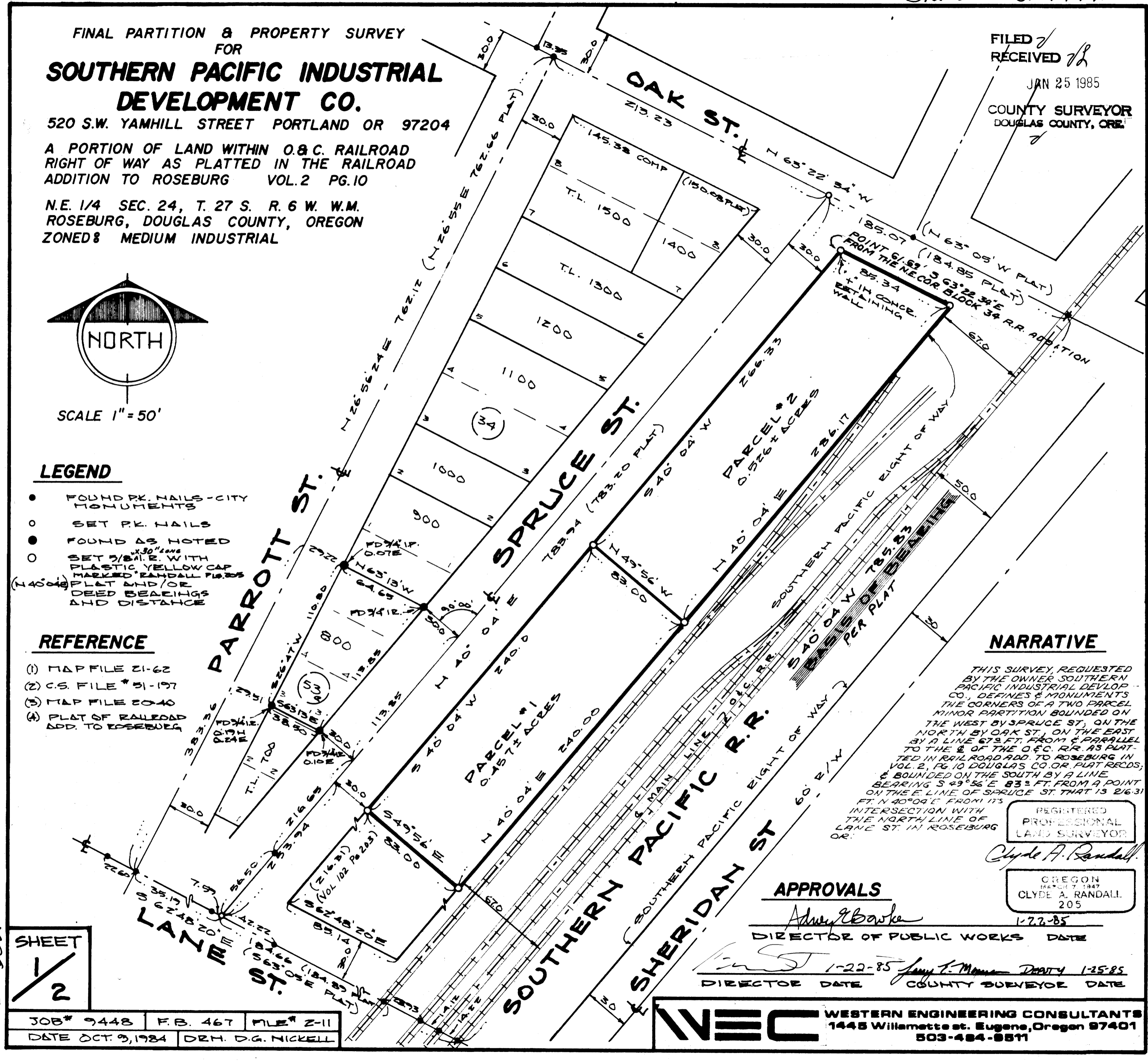
APPROVALS

Adrian Bowke DIRECTOR OF PUBLIC WORKS DATE 1-22-85
Judy E. Moore DEPUTY COUNTY SURVEYOR DATE 1-25-85

SHEET 1/2

JOB# 9448 F.B. 467 FILE# 2-11 DATE OCT. 9, 1984 DRH. D.G. NICKELL

WEC WESTERN ENGINEERING CONSULTANTS 1445 Willamette St. Eugene, Oregon 97401 503-484-8511



MAP FILE 198-17A