

RECORD OF SURVEY
COOKED WASSER CADASTRAL SURVEY
FOR THE U.S.D.A. FOREST SERVICE
SILUSLAW NATIONAL FOREST

SECTION 6, T21S, R10W, W.M.
 DOUGLAS COUNTY, OREGON
 NOVEMBER 1984

COUNTY SURVEYORS FILE DATA
 DO NOT REMOVE FROM OFFICE

REGISTERED
 PROFESSIONAL
 LAND SURVEYOR

Herman A. Pieske

OREGON
 JULY 14, 1978
 HERMAN A. PIESKE
 1651

FILED
 RECORDED

COUNTY SURVEYOR
 DOUGLAS COUNTY, OREGON

Herman A. Pieske
 HERMAN A. PIESKE
 P.L.S. 1651

I, HERMAN A. PIESKE, REGISTERED LAND SURVEYOR IN THE STATE OF OREGON, HEREBY CERTIFY THAT THIS PLAT AND THE NOTES HEREON ARE A CORRECT REPRESENTATION OF A SURVEY I PERFORMED DURING JULINE, 1983-NOVEMBER, 1984, AT THE REQUEST OF THE U.S.D.A. FOREST SERVICE IN ACCORDANCE WITH THE STATUTES OF THE STATE OF OREGON AND THE ARTICLES OF MY CONTRACT.

NARRATIVE:

PURPOSE:

TO MONUMENT AND MARK THE BOUNDARIES BETWEEN THE SILUSLAW NATIONAL FOREST LANDS AND PRIVATE OWNERSHIP.

HISTORY:

A HISTORY OF PRIOR SURVEYS WHICH PERTAIN TO THIS SURVEY IS AS FOLLOWS:

IN 1867, JOHN W. MELDRUM, UNDER CONTRACT NO. 202, SURVEYED SECTION 6.

IN 1919, FRED W. RUDOLF, ELMER F. STRICKLER AND GERALD A. BORRELS, UNDER CONTRACT NO. 36, RESURVEYED THE SOUTH BOUNDARY OF SECTION 6.

IN 1983, AA SURVEYING SERVICE, INC., UNDER CONTRACT NO. 53-04TO-3-0870N, SURVEYED THE EAST BOUNDARY OF SECTION 6 AND FILED THE MAP IN THE DOUGLAS COUNTY SURVEYOR'S OFFICE PER M95-59.

PROCEDURE:

THIS SURVEY WAS ACCOMPLISHED BY RANDOM TRAVERSE AND LONG RANGE CONTROL; WITH ALL KNOWN AND FOUND CORNERS TIED IN. I FOUND AND REMONUMENTED THE FOLLOWING CORNERS: THE SOUTH ONE-QUARTER CORNER OF SECTION 6.

I MADE A DILIGENT SEARCH FOR ALL OF THE CORNERS MENTIONED BELOW, AS BEING SET BY PROPORTIONAL METHODS.

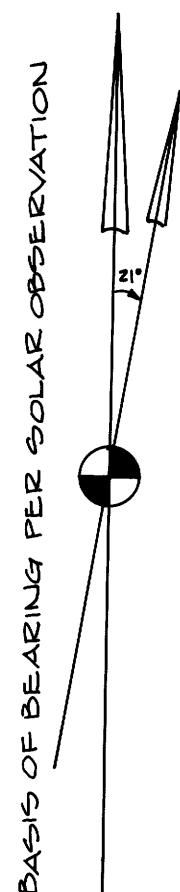
THE FOLLOWING CORNERS WERE SET BY PROPORTION: MEANDER CORNER BETWEEN SECTIONS 6 AND 31; NORTH ONE-QUARTER CORNER; N 1/16, S 1/16 AND W 1/4 CORNERS ON THE RANGE LINE; THE W 1/16 CORNER FOR SECTION 6 ONLY AND THE W 1/16 CORNER FOR SECTION 7 ONLY ON THE SOUTH LINE OF SEC. 6.

THE REASON THAT THE W 1/16 FOR SECTION 6 ONLY AND THE W 1/16 FOR SECTION 7 ONLY ARE OFFSET IS: SECTION 6 WAS SURVEYED IN 1874 AND SECTION 7 IN 1919. THE LINE BETWEEN SECTION 6 AND SECTION 7 DIFFERED BETWEEN SURVEYS (AS INDICATED ON THE ANNEXED MAP); THEREFORE THE SECTIONS MUST BE SUBDIVIDED ON THEIR OWN DATA.

THE CORNERS REMONUMENTED AND PROPORTIONED WERE DONE ACCORDING TO THE 1973 BLM MANUAL OF SURVEYING INSTRUCTIONS. ALL OF THE CORNERS SET MEET THE POSITIONAL TOLERANCE SPECIFICATIONS OF MY CONTRACT.

THE INSTRUMENTS USED ON THIS SURVEY WERE TOPCON GTS-1, GTS-2, DICM-2 E.D.M., LEITZ TM 20-C, WILD T-2 AND HP 3800 E.D.M.

REFERENCE FIELD BOOKS: #1 - #37.



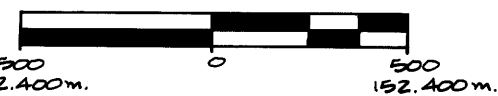
MAGNETIC DECLINATION = 21°E

LEGEND:

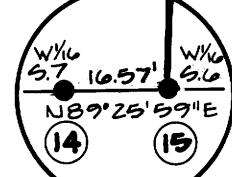
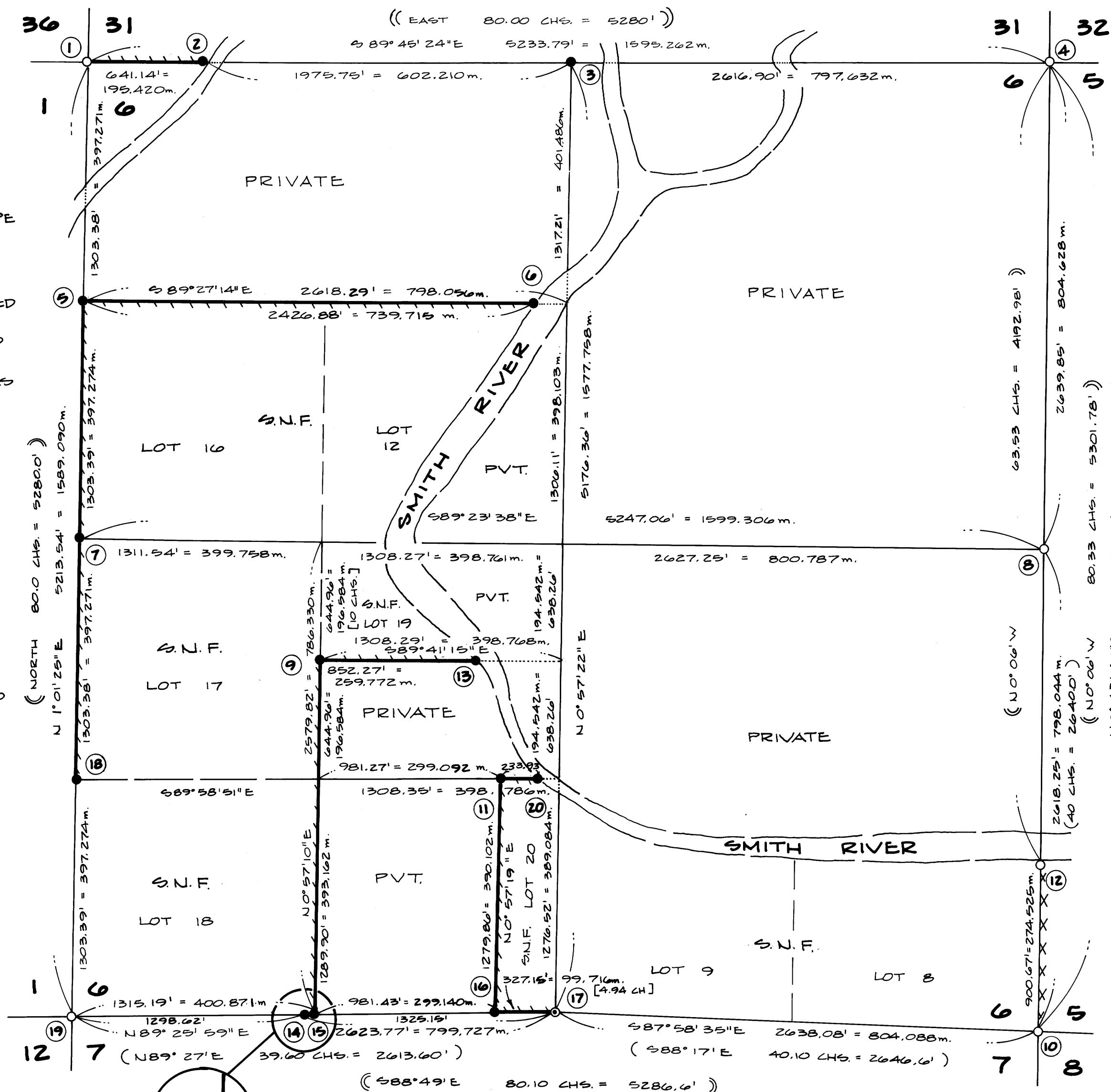
- - FOUND MONUMENT AS NOTED
- - SET MONUMENT AS NOTED
- ⊙ - CORNER REMONUMENTED AS NOTED

NOTES:

1. BASIS OF BEARINGS AND BEARINGS CHECKS ARE FROM SOLAR OBSERVATIONS.
2. () - INDICATES DATA OF RECORD PER G.L.O. RESURVEY IN 1919, CONTRACT NO. 36
3. () - INDICATES DATA OF RECORD PER G.L.O. SURVEY IN 1867, CONTRACT NO. 202
4. [] - INDICATES DATA OF RECORD PER G.L.O. SUPPLEMENTAL PLAT, 1930
5. --- INDICATES LINES POSTED THIS SURVEY WITH 6 FT. ORANGE FIBERGLASS POSTS
6. XX - INDICATES LINE PREVIOUSLY POSTED
7. S.N.F. - SILUSLAW NATIONAL FOREST



SCALE: 1" = 500'
 3.28083 FEET = ONE METER



PREPARED BY:

AA SURVEYING SERVICE, INC., P.O. BOX 130, ROSEBURG, OREGON 97470

MAP FILE M 97-76A