

**RECORD OF SURVEY**  
 COOKED WASSEN CADASTRAL SURVEY  
 FOR THE U.S.D.A. FOREST SERVICE  
 Siuslaw National Forest  
 SECTION 8, T21S, R10W, W.M.  
 DOUGLAS COUNTY, OREGON  
 NOVEMBER 1984

COUNTY SUPERVISORS FILE DATA  
 DO NOT REMOVE FROM OFFICE

M 97-749

I, HERMAN A. PIESKE, REGISTERED LAND SURVEYOR IN THE STATE OF OREGON, HEREBY CERTIFY THAT THIS PLAT AND THE NOTES HEREON ARE A CORRECT REPRESENTATION OF A SURVEY I PERFORMED DURING JUNE, 1983, - NOVEMBER, 1984 AT THE REQUEST OF THE U.S.D.A. FOREST SERVICE IN ACCORDANCE WITH THE STATUTES OF THE STATE OF OREGON AND THE ARTICLES OF MY CONTRACT.

*Herman A. Pieske*  
 HERMAN A. PIESKE  
 P.L.S. 1951

**NARRATIVE:**

**PURPOSE:**

TO MONUMENT AND MARK THE BOUNDARIES BETWEEN THE Siuslaw National Forest Lands and Private Ownership.

**HISTORY:**

A HISTORY OF PRIOR SURVEYS WHICH PERTAIN TO THIS SURVEY IS AS FOLLOWS:

IN 1867, JOHN W. MELDRUM, UNDER CONTRACT NO. 116, SURVEYED THE NORTH AND EAST BOUNDARIES.

IN 1874, W.H. BYARS, UNDER CONTRACT NO. 202, RESURVEYED THE EAST LINE OF SECTION 8.

IN 1919, FRED W. RODOLF, ELMER F. STRICKLER AND GERALD A. SORRELS, UNDER CONTRACT NO. 36, RESURVEYED THE NORTH AND EAST BOUNDARIES; AND SURVEYED THE SOUTH AND WEST BOUNDARIES.

IN 1983, RICHARD J. HINTZ, L.S. 497, SURVEYED THE WEST BOUNDARY OF SECTION 9, CONTRACT NO. 53-04TO-2-0786N, FILED IN THE DOUGLAS COUNTY SURVEYOR'S OFFICE, PER M 95-4.

IN 1983, AA SURVEYING SERVICE, INC., UNDER CONTRACT NO. 53-04TO-3-0870N, SURVEYED THE NORTH BOUNDARY OF SAID SECTION AND FILED THE MAP IN THE DOUGLAS COUNTY SURVEYOR'S OFFICE PER M 95-59.

**PROCEDURE:**

THIS SURVEY WAS ACCOMPLISHED BY RANDOM TRAVERSE AND LONG RANGE CONTROL; WITH ALL KNOWN AND FOUND CORNERS TIED IN. I FOUND AND REMONUMENTED THE FOLLOWING CORNERS: THE NORTH ONE-QUARTER CORNER OF SECTION 17 ONLY; THE WEST ONE-QUARTER CORNER; THE SOUTHWEST CORNER.

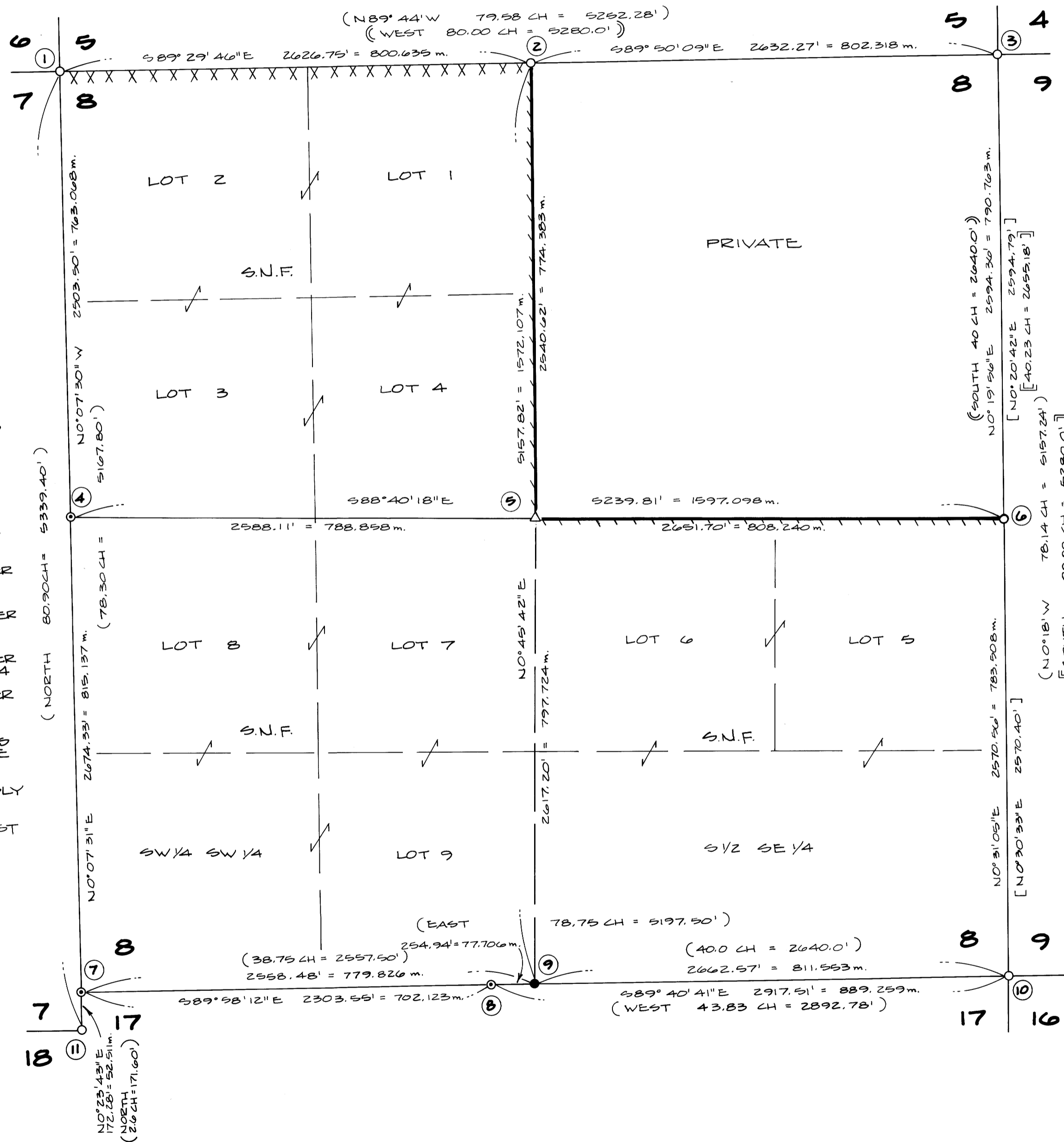
THE EAST ONE-QUARTER WAS REMONUMENTED BY RICHARD J. HINTZ, P.L.S. 497, IN JULY 1983.

I DILIGENTLY SEARCHED FOR THE SOUTH ONE-QUARTER CORNER OF SEC. 8. I FOUND NO EVIDENCE SO I PROPORTIONED THE SOUTH ONE-QUARTER CORNER OF SEC. 8 BY SINGLE PROPORTION BETWEEN THE NORTH ONE-QUARTER & THE SOUTHEAST CORNER OF SEC. 8.

THE CORNERS REMONUMENTED AND PROPORTIONED WERE DONE ACCORDING TO THE 1973 BLM MANUAL OF SURVEYING INSTRUCTIONS. ALL OF THE CORNERS SET MEET THE POSITIONAL TOLERANCE SPECIFICATIONS OF MY CONTRACT.

THE INSTRUMENTS USED ON THIS SURVEY WERE: TOPCON GTS-1, GTS-2, DCM-2 E.D.M., LEITZ TM 20-C, WILD T-2 AND HP 3800 E.D.M.

REFERENCE FIELD BOOKS: #1 - #37.



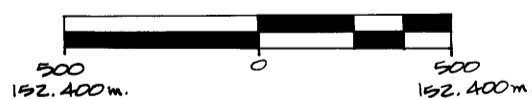
MAGNETIC DECLINATION = 21°E

**LEGEND:**

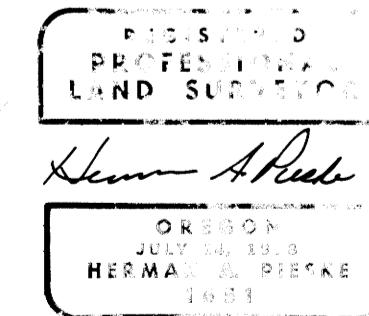
- - FOUND MONUMENT AS NOTED
- - SET MONUMENT AS NOTED
- ⊙ - CORNER REMONUMENTED AS NOTED
- △ - SCRIBED CORNER TREE AS NOTED

**NOTES:**

1. BASIS OF BEARINGS AND BEARINGS CHECKS ARE FROM SOLAR OBSERVATIONS.
2. ( ) - INDICATES DATA OF RECORD PER G.L.O. RESURVEY IN 1919, CONTRACT NO. 36
3. ( ) - INDICATES DATA OF RECORD PER G.L.O. SURVEY IN 1867, CONTRACT NO. 116
4. [ ] - INDICATES DATA OF RECORD PER SURVEY IN 1983, FILED M95-4
5. [ ] - INDICATES DATA OF RECORD PER G.L.O. RESURVEY IN 1874, CONTRACT NO. 202
6. --- - INDICATES LINES POSTED THIS SURVEY WITH 6 FT. ORANGE FIBERGLASS POSTS
7. XXX - INDICATES LINES PREVIOUSLY POSTED
8. S.N.F. - Siuslaw National Forest



SCALE: 1" = 500'  
 328083 FEET = ONE METER



M 97-749