

FILED  
RECEIVED 08  
JUN 6 1984  
COUNTY SURVEYOR  
DOUGLAS COUNTY, OREGON

Map File M 97-68  
C.S. File 58/146

**LEGEND**

- Corner found and used for control
- Corner set this survey
- Property line posted this survey

**NARRATIVE**

This plat and the notes hereon are a correct and accurate representation of a survey performed in Section 26, T.23 S., R.10 W., W.M., during the period June through October, 1984.

The purpose of this survey was to establish the center 1/4 corner and mark the property lines defining Champion International Corporation's ownership.

The N 1/4 corner was re-established by RPLS 2004 in 1983 (CS file M95-29A). At the S 1/4 corner, I found and accepted the 1964 County Surveyors Office brass cap. Both E 1/4 and W 1/4 corners were re-established from original evidence identified during the course of this survey.

The center 1/4 corner was set in accordance with the Manual of Surveying Instruction, 1973 edition, Chapter III. All corners set or re-monumented are in accordance with chapter III of the Manual.

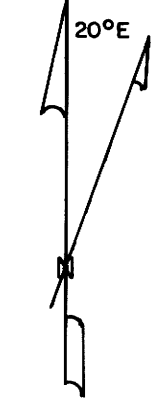
Closed traverses were utilized throughout this survey with a minimum acceptable closure of 1 part in 4500.

Property lines were marked using 6' steel fence posts set to within 0.5' of true line at a maximum interval of 250'.

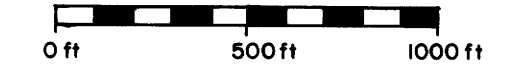
**NOTES**

- 1) Basis of bearing: Solar observation
- 2) Bearings to accessories are magnetic; mean magnetic variation = 20°E
- 3) Equipment used: Jena O20A Theodolite, MAC 1E EDM, AGA 076 EDM, 300' Steel Tape

REGISTERED  
PROFESSIONAL  
LAND SURVEYOR  
*Gregory K. Miller*  
OREGON  
JULY 16, 1982  
GREGORY K. MILLER  
2004



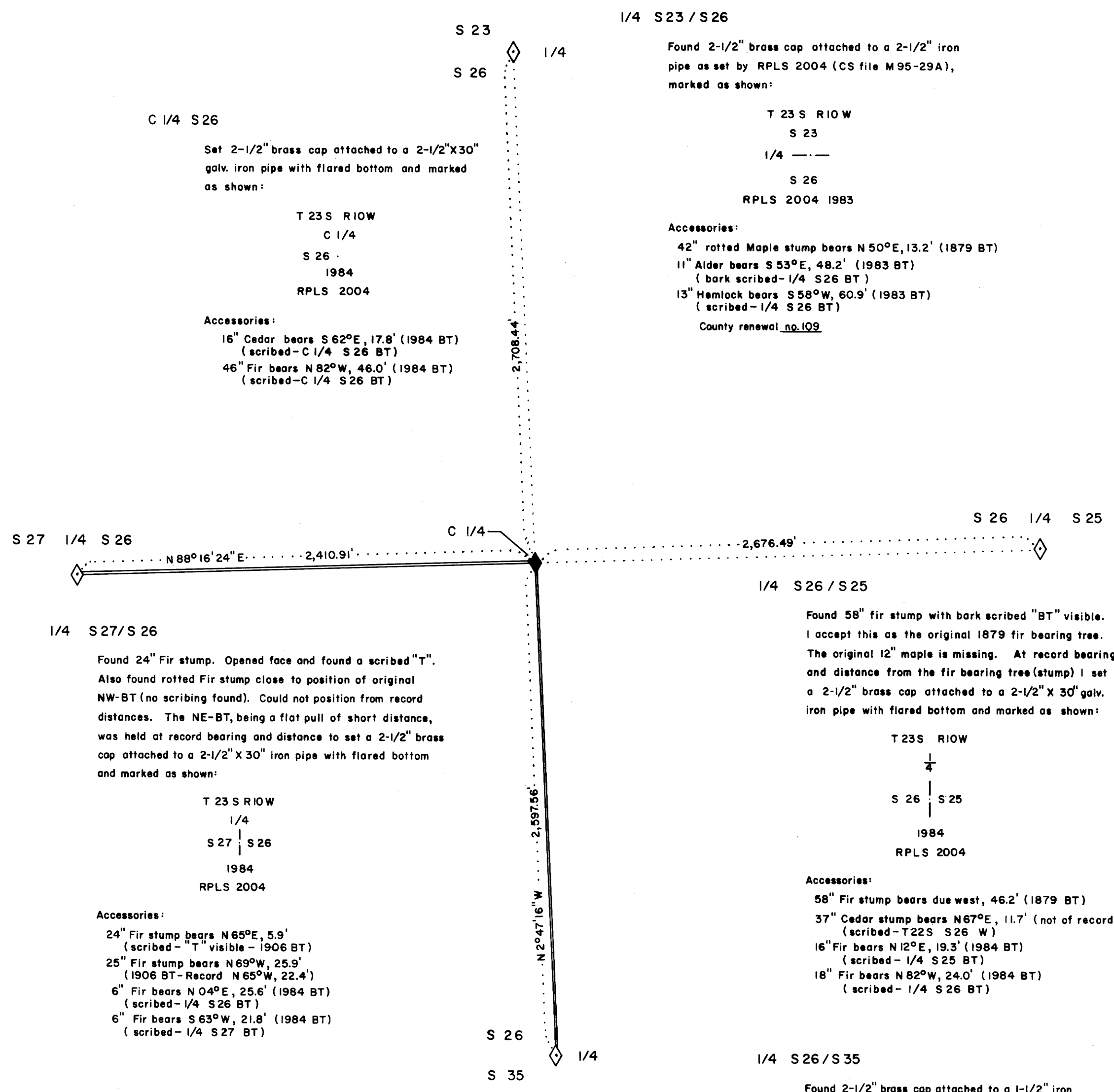
GREGORY K. MILLER  
OREGON RPLS 2004  
P.O. BOX 37  
MAPLETON, OREGON  
97453



**SURVEY IN  
SECTION 26, T.23 S., R.10 W., W.M.  
DOUGLAS COUNTY, OREGON**

FOR  
**CHAMPION INTERNATIONAL CORPORATION  
JUNE-OCTOBER, 1984**

**COUNTY SURVEYORS FILE DATA  
DO NOT REMOVE FROM OFFICE**



1/4 S 23 / S 26  
Found 2-1/2" brass cap attached to a 2-1/2" iron pipe as set by RPLS 2004 (CS file M95-29A), marked as shown:  
T 23 S R10 W  
S 23  
1/4  
S 26  
RPLS 2004 1983

Accessories:  
42" rotted Maple stump bears N 50°E, 13.2' (1879 BT)  
11" Alder bears S 53°E, 48.2' (1983 BT) (bark scribed-1/4 S 26 BT)  
13" Hemlock bears S 58°W, 60.9' (1983 BT) (scribed-1/4 S 26 BT)  
County renewal no. 109

C 1/4 S 26  
Set 2-1/2" brass cap attached to a 2-1/2" x 30" galv. iron pipe with flared bottom and marked as shown:  
T 23 S R10 W  
C 1/4  
S 26  
1984  
RPLS 2004  
Accessories:  
16" Cedar bears S 62°E, 17.8' (1984 BT) (scribed-C 1/4 S 26 BT)  
46" Fir bears N 82°W, 46.0' (1984 BT) (scribed-C 1/4 S 26 BT)

1/4 S 26 / S 25  
Found 58" fir stump with bark scribed "BT" visible. I accept this as the original 1879 fir bearing tree. The original 12" maple is missing. At record bearing and distance from the fir bearing tree (stump) I set a 2-1/2" brass cap attached to a 2-1/2" x 30" galv. iron pipe with flared bottom and marked as shown:  
T 23 S R10 W  
1/4  
S 26 | S 25  
1984  
RPLS 2004

Accessories:  
58" Fir stump bears due west, 46.2' (1879 BT)  
37" Cedar stump bears N 67°E, 11.7' (not of record) (scribed-T 23 S S 26 W)  
16" Fir bears N 12°E, 19.3' (1984 BT) (scribed-1/4 S 25 BT)  
18" Fir bears N 82°W, 24.0' (1984 BT) (scribed-1/4 S 26 BT)

1/4 S 26 / S 35  
Found 2-1/2" brass cap attached to a 1-1/2" iron pipe marked as shown:

COUNTY SURVEYORS OFFICE  
T 23 S  
1/4 S 26  
S 35  
R 10 W  
1964

Accessories:  
37" Fir w/healed face bears N 45°E, 39.1' (1933 BT - Record N 39°E, 39.0')  
45" Fir w/healed face bears N 65°E, 43.6' (1933 BT - Record N 65°E, 44.0')  
7" Hemlock w/healed face bears S 26°W, 24.4' (1964 BT - Record S 26°W, 24.7')  
County renewal no. 58

1/4 S 27 / S 26  
Found 24" Fir stump. Opened face and found a scribed "T". Also found rotted Fir stump close to position of original NW-BT (no scribing found). Could not position from record distances. The NE-BT, being a flat pull of short distance, was held at record bearing and distance to set a 2-1/2" brass cap attached to a 2-1/2" x 30" iron pipe with flared bottom and marked as shown:  
T 23 S R10 W  
1/4  
S 27 | S 26  
1984  
RPLS 2004  
Accessories:  
24" Fir stump bears N 65°E, 5.9' (scribed-"T" visible - 1906 BT)  
25" Fir stump bears N 69°W, 25.9' (1906 BT - Record N 65°W, 22.4')  
6" Fir bears N 04°E, 25.6' (1984 BT) (scribed-1/4 S 26 BT)  
6" Fir bears S 63°W, 21.8' (1984 BT) (scribed-1/4 S 27 BT)

Map File M 97-68  
C.S. File 58/146