

Resurvey and Subdivision of NW 1/4 Section 6, T30S, R2W, W.M., Oregon

For Roseburg Lumber Company

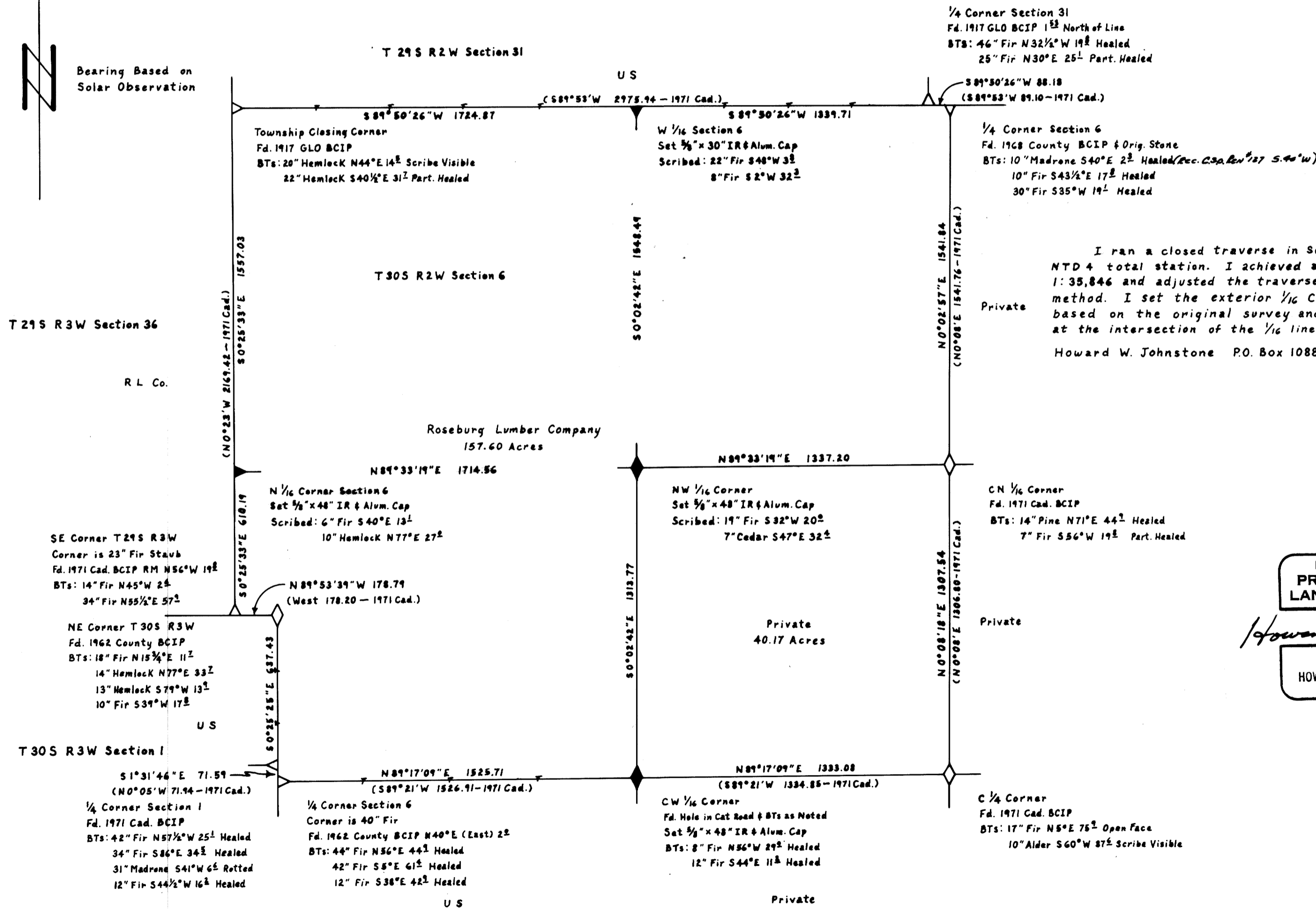
November 16, 1984

Scale: 1" = 400'

FILED ✓
RECEIVED ✓
REC 3
COUNTY SURVEYOR
JULIUS COUNTY, ORE
✓

Legend

- ▷ Monument Found as Noted
- ▶ Set 3/8" IR & Alum. Cap Marked "LS 498"
- Section or Property Line
- Line Referenced to Alum. Tags
- () Record Data



REGISTERED
PROFESSIONAL
LAND SURVEYOR

Howard W. Johnstone

OREGON
MAY 13, 1960
HOWARD W. JOHNSTONE
498

MAP FILE M97-65

M97-65