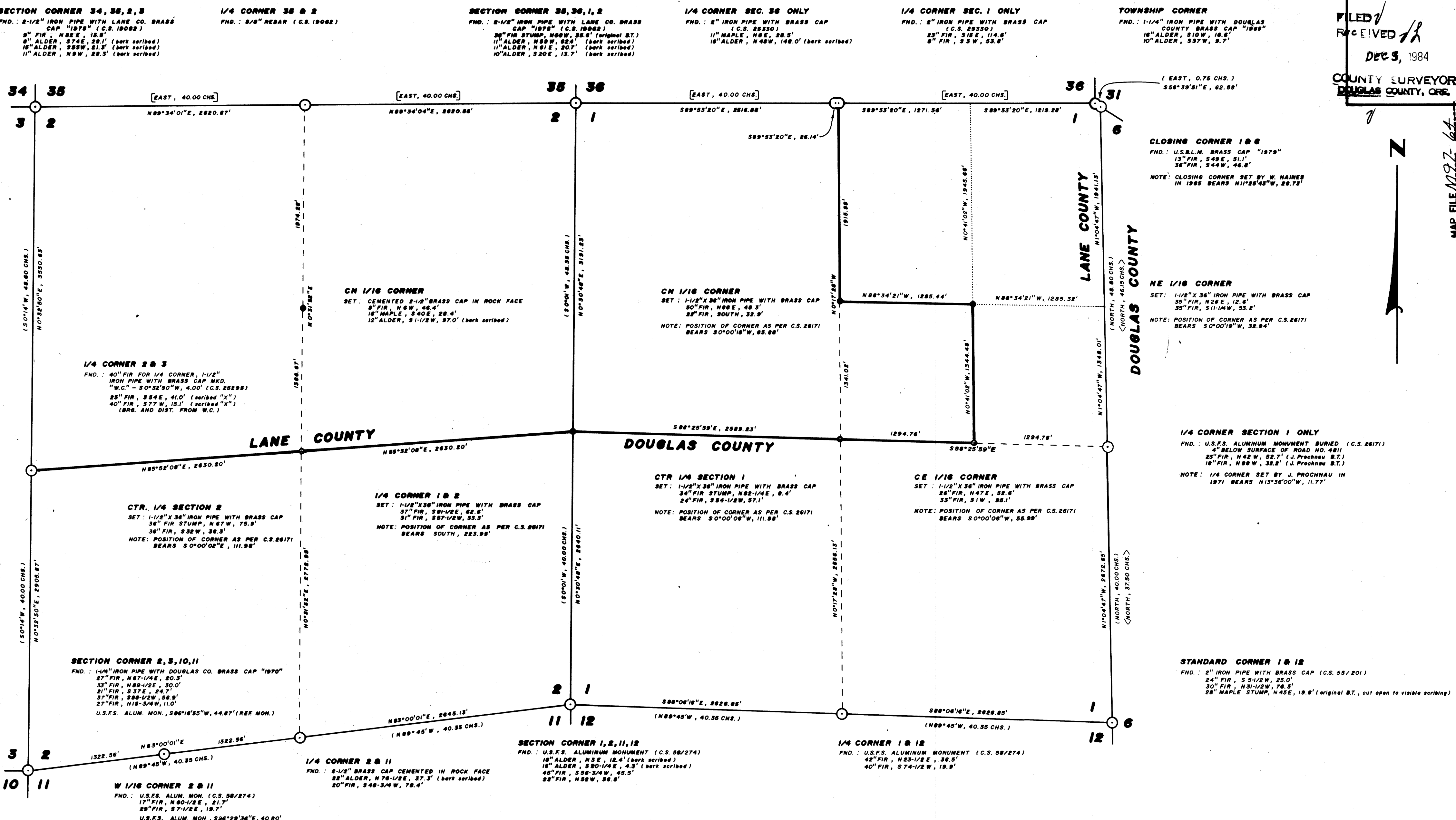


MAP FILE M92-64



- NARRATIVE -

THIS SURVEY WAS MADE IN AUGUST-DECEMBER, 1984 BY DONALD L. PEEL OF PEEL BAKER LAND SURVEYING INC., 1262 LAWRENCE STREET, EUGENE, OREGON. THE PURPOSE OF THIS SURVEY WAS TO CORRECT AN EARLIER SURVEY MADE FOR DAVIDSON INDUSTRIES, INC. (LANE CO. C.S. 2617) OR DOUGLAS CO. C.S. M94-64. IN THAT SURVEY, I HAD DETERMINED THE POSITION OF SECTION CORNER 1, 2, 11, 12 BY SINGLE PROPORTION INSTEAD OF THE "THREE POINT METHOD" (MANUAL 8-29). A LATER SURVEY CORRECTLY ESTABLISHED THIS CORNER (C.S. 58/274) AND WAS USED FOR CONTROL IN THIS SURVEY. THE BLAZED LINE AS ESTABLISHED IN SAID EARLIER SURVEY (C.S. 2617) OR C.S. M94-64 WAS PAINTED OUT WITH BLACK PAINT. THE CORRECTED TRUE LINE WAS BLAZED (BLAZES PAINTED YELLOW) ON ONE SIDE ONLY (THE SOVT. OWNERSHIP SIDE). THE 1/4 CORNER BETWEEN SECTIONS 1 & 2 WAS ESTABLISHED BY SINGLE PROPORTION. THE POSITION OF THE NORTH 1/16 CORNER ON THE EAST LINE OF SECTION 1 WAS DETERMINED (BUT NOT SET) BY SINGLE PROPORTION BASED ON THE 1992 SURVEY. THE CENTER 1/4 CORNER OF SECTIONS 1 & 2 AND THE NE 1/16 CORNER OF SECTION 1 WERE SET AT THE POINT OF INTERSECTION OF NORTH-SOUTH AND EAST-WEST CENTERLINES. THE CN 1/16 AND CE 1/16 CORNERS OF SECTION 1 AND THE CN 1/16 CORNER OF SECTION 2 WERE SET AT PROPORTIONAL DISTANCE. THE CN 1/16, CE 1/16, CTR 1/4 OF SECTION 1, THE 1/4 CORNER 2 & 11 AND THE CTR 1/4 OF SECTION 2 WERE ALL MOVED FROM THEIR ORIGINAL POSITION AS ESTABLISHED IN C.S. 2617 OR C.S. M94-64 TO THEIR CORRECTED POSITION AND THUS DATED "1983". ALL CORNERS SET IN THIS SURVEY WERE MONUMENTED AS STATED ON THIS PLAN AND WERE MARKED ACCORDING TO THE "MANUAL" AND ALSO MARKED "PLS 752".

- BASIS OF BEARING:** SOLAR OBSERVATION
SCALE: 1" = 600'
 DISTANCES TO BEARING TREES ARE CENTER MEASURE AND BEARINGS ARE MAGNETIC, VAR. 20°
- CORNERS FOUND
 - ⊙ CORNERS SET THIS SURVEY
 - BLAZED PROPERTY LINE
 - () G.L.O. BEARING AND DISTANCE - 1892
 - < > G.L.O. BEARING AND DISTANCE - 1894
 - [] G.L.O. BEARING AND DISTANCE - 1899

REGISTERED
PROFESSIONAL
LAND SURVEYOR

Donald L. Peel

OREGON
JULY 9, 1966
DONALD L. PEEL
752

Donald L. Peel

**AMENDED SURVEY OF
SECTIONS 1&2, T20S, R11W, W.M.
LANE & DOUGLAS COUNTIES, OR.**
 FOR
DAVIDSON INDUSTRIES INC.
 BY
PEEL BAKER LAND SURVEYING INC.
 NOVEMBER 27, 1984

COUNTY SURVEYORS FILE DATA
DO NOT REMOVE FROM OFFICE

MAP FILE M92-64