

LOCATION POSTER DATA FOR TEMPORARY CORNERS

- ✓ CENTER SECTION 14" CEDAR BEARS S75°E 7.5 FEET
18" CEDAR BEARS S36°30'W 19.3 FEET
- CE 1/16 20" OAK BEARS N84°30'W 41.6 FEET
10" OAK BEARS S43°30'E 61.1 FEET
- CS 1/16 10" FIR BEARS N76°30'E 15.0 FEET
7" FIR BEARS S49°30'W 23.4 FEET
- E 1/16 26/35 8" DOGWOOD BEARS S77°W 14.6 FEET
15" FIR BEARS N61°E 44.2 FEET
- ✓ S 1/4 CORNER 35/2 14" FIR BEARS N17°E 59.5 FEET
48" CEDAR BEARS S75°E 55.5 FEET
18" FIR BEARS S23°30'E 38.6 FEET

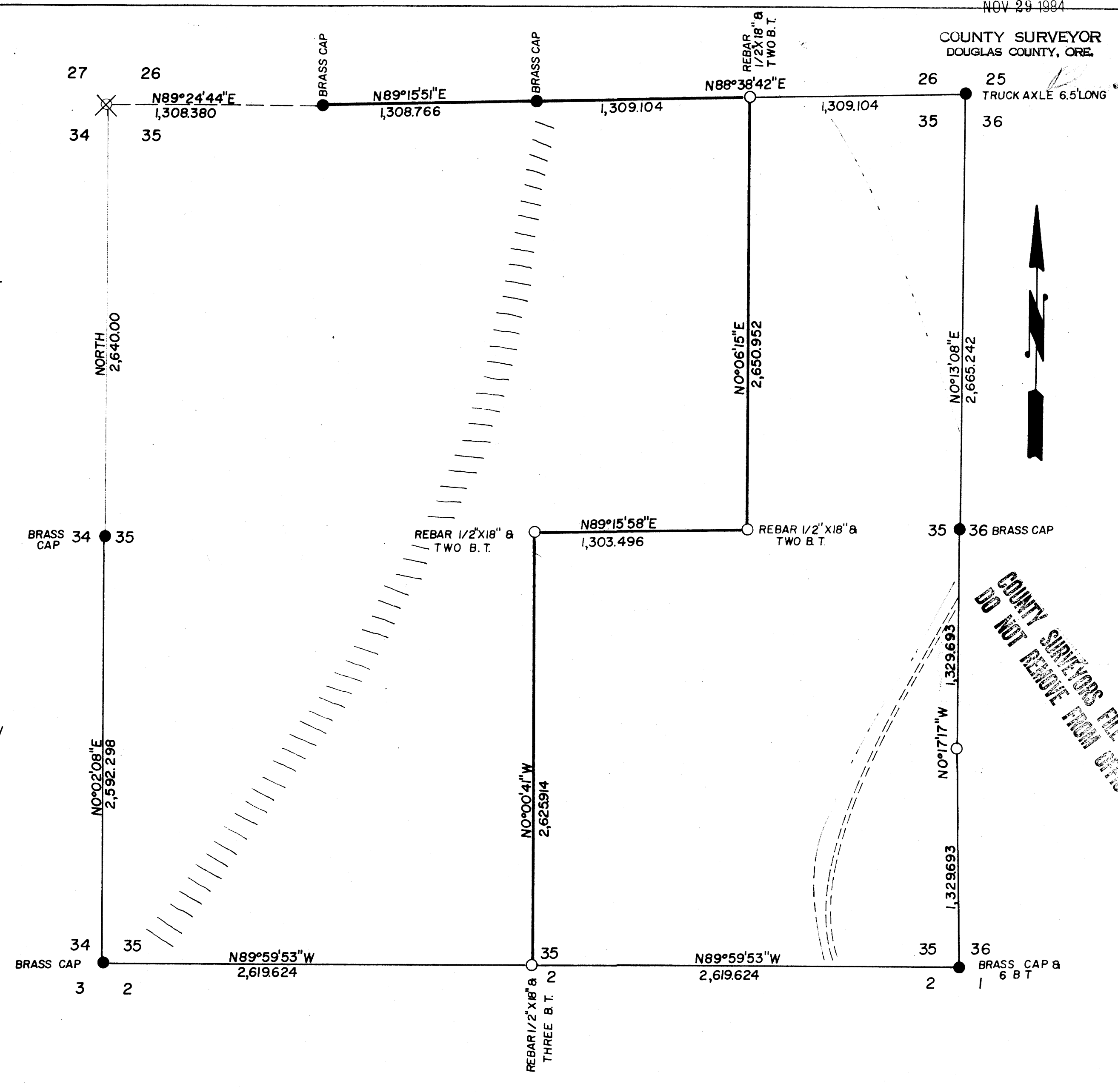
NOTES

- SCALE 1" = 500'
- BLACK LINES ARE AS SURVEYED
- GREEN LINES ARE AS PER G.L.O. PLAT
- RED LINES ARE AS PROJECTED
- 1. COORDINATES OF N.E. SECTION CORNER
N 32,040.112
E 46,050.911
- COORDINATES OF S 1/4 CORNER 35/2
N 26,715.584
E 43,434.481
- 2. BEARING OF SURVEY FROM SOLAR OBSERVATION
TAKEN NEAR THE WEST 1/4 CORNER 34/35 T24SR4W
ON MARCH 19, 1974
- 3. HEAVY LINES WERE POSTED WITH B.L.M. BOUNDARY
TAGS EVERY ± 150 FEET

COUNTY SURVEYORS FILE DATA
DO NOT REMOVE FROM OFFICE

NOTE:
THIS PLAT COPY RECEIVED FROM
W. ROGERS, B.L.M. ROSEBURG DISTRICT.
UNABLE TO CONTACT L.W. BARBER
FOR ORIGINAL PLAT.

J. Langer
11/29/84



COUNTY SURVEYORS FILE DATA
DO NOT REMOVE FROM OFFICE

- LEGEND:**
- DENOTES MONUMENTS FOUND
 - DENOTES MONUMENTS SET
 - ===== DENOTES ROAD
 - DENOTES RIVER
 - ////// DENOTES RIDGE
 - LINE SURVEYED & POSTED
 - LINE SURVEYED
 - FROM G.L.O. NOTES
 - - - - - PROJECTED
 - ⊗ MONUMENTS G.L.O. PLAT & PROJECTED

SURVEY PLAT		
SECTION 35, T24 S, R 4 W, W.M. DOUGLAS COUNTY, OREGON		
FOR THE BUREAU OF LAND MANAGEMENT ROSEBURG DISTRICT		
SURVEYED BY FEDERAL HIGHWAY ADMINISTRATION VANCOUVER, WASHINGTON		
PROJECT ENGR <u>L.W. BARBER</u>		
DRAWN BY RCA	MAY 15, 1974	SCALE 1" = 500'