

Resurvey and Subdivision of N $\frac{1}{2}$ Section 3, T31S, R7W, W. M., Oregon

For Roseburg Lumber Company

October 22, 1984

Scale: 1" = 400'

FILED
RECEIVED

NOV 29 1984

COUNTY SURVEYOR
DOUGLAS COUNTY, ORE.

Legend

- Monument Found as Noted
- Set $\frac{3}{8}$ " IR & Alum. Cap Marked "LS 498"
- Section, Subdivision or Property Line
- Line Referenced to Alum. Tags
- () Record Data

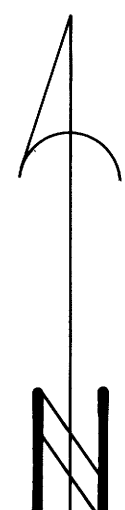
I ran a closed traverse in Section 3 using a Nikon NTDA total station. I achieved a precision of 1:48,640 and adjusted the traverse by the Crandall method. I set the corners by standard subdivision procedure based on the location of the existing monuments.

Howard W. Johnstone P.O. Box 1088 Roseburg, Oregon

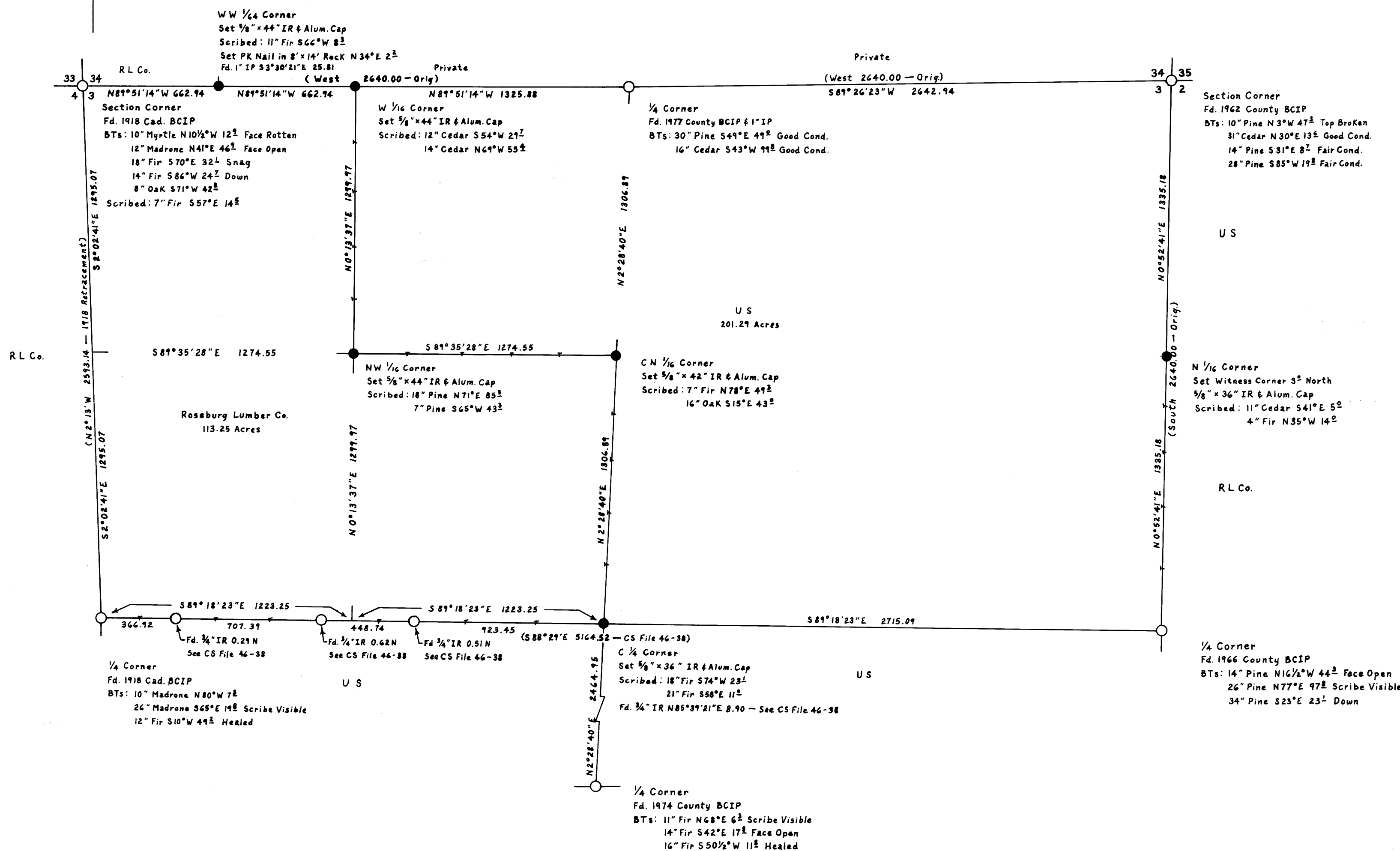
REGISTERED
PROFESSIONAL
LAND SURVEYOR

Howard W. Johnstone

OREGON
MAY 13 1960
HOWARD W. JOHNSTONE
498



Bearing Based on
Solar Observation



MAP FILE 11927-61

MAP FILE 11927-61