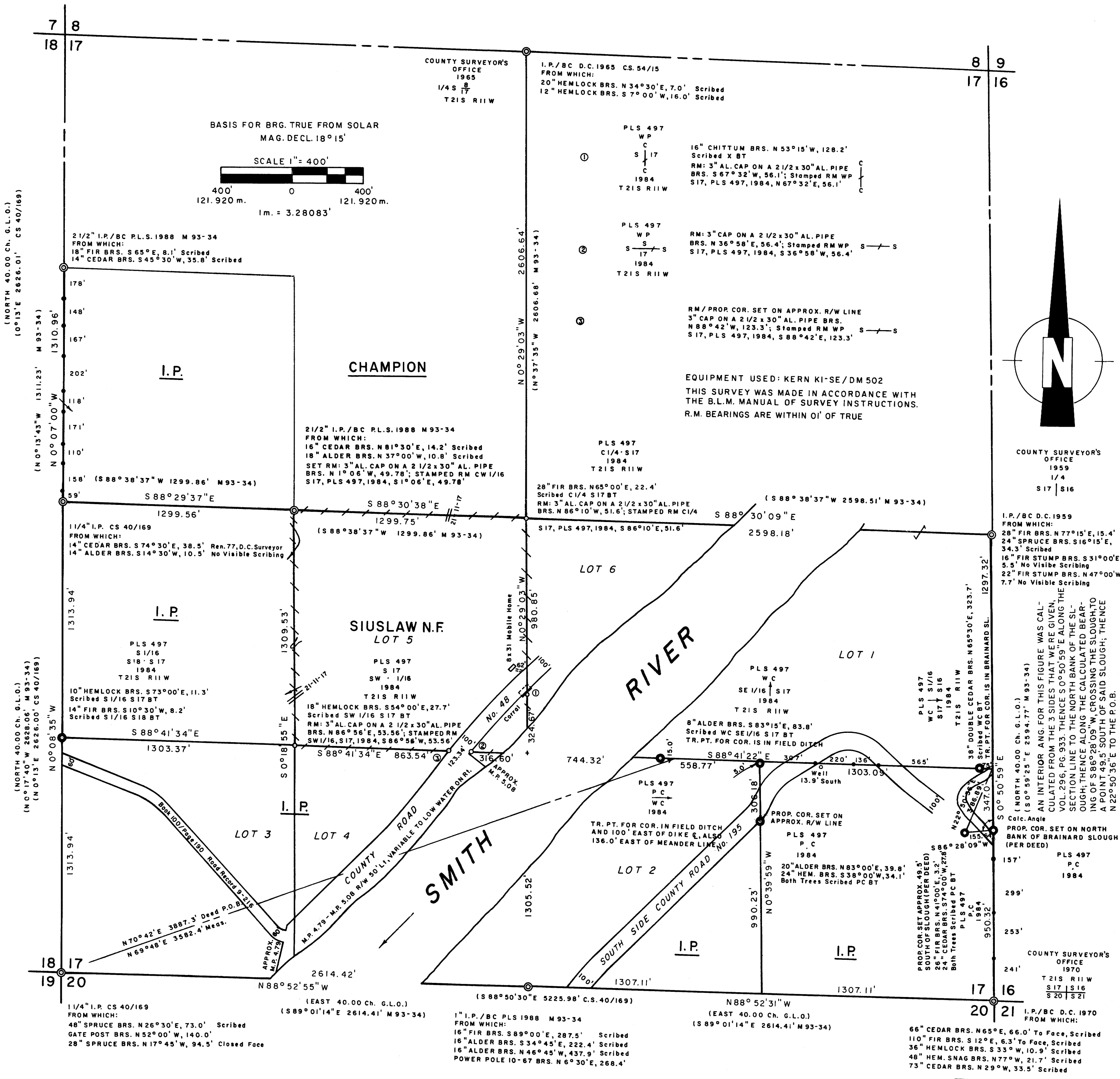


COUNTY SURVEYORS FILE DATA
DO NOT REMOVE FROM OFFICE

COOPERATIVE SURVEY FOR INTERNATIONAL PAPER CO. U.S. FOREST SERVICE

FILED 7
RECEIVED
NOV 8 1984
COUNTY SURVEYOR
DOUGLAS COUNTY, ORE.
7

SECTION 17, T21S, R11W
SCALE 1" = 400' OCT. 1984
SMITH RIVER I.P. COOPERATIVE CADASTRAL SURVEY 53-04T0-4-2180N



CORNERS FOUND (Circled symbols)

- SET 2 1/2 x 30" AL. PIPES / 3" AL. CAPS STAMPED AS SHOWN
- SET 1 1/4 x 36" I.P.'S / 2 1/2" BR. CAPS STAMPED AS SHOWN
- SET 1/2 x 60" I.R.'S / ATTACHED AL. PROPERTY LINE SIGNS

DISTANCES ARE TAKEN TO A 50d. NAIL IN THE CENTER OF EACH NEW BEARING TREE. THE BEARING TREES ARE DOUBLE BLAZED WITH THE LOWER BLAZE SCRIBED "BT", AND A BRASS WASHER STAMPED "P.L.S. 497" NAILED FLUSH WITH THE BLAZE.

NORTH LINE OF LOT 5 HAS BEEN POSTED WITH STEEL FENCE POSTS WITH ATTACHED CHAMPION INTERNATIONAL SIGNS AND BLAZED. PROPERTY BOUNDARY SIGNS (54-2) WERE ATTACHED TO THE STEEL POSTS.

SOUTH AND WEST LINES OF LOT 5 WERE POSTED WITH F.S. POLYMER POSTS WITH 54-2d DECALS. INTERNATIONAL PAPER CO. PROPERTY LINE SIGNS WERE ATTACHED TO THE F.S. POSTS, AND THE LINES WERE BLAZED AND PAINTED.

EAST LINE OF LOT 5 WAS POSTED WITH F.S. POLYMER POSTS WITH 54-2d DECALS.

SECTION 17 WAS ORIGINALLY SURVEYED BY JOHN W. MELDRUM IN 1866, AND THE WEST LINE WAS RESURVEYED IN 1891 BY WILLIAM THIEL.

IN 1949 HARRY S. HUGILL, P.E., RE-ESTABLISHED THE SOUTHWEST CORNER OF SAID SECTION 17 BY DOUBLE PROPORTIONATE MEASUREMENT (C.S. 40/169). THE NEXT SURVEY OF RECORD WAS ALONG THE NORTH LINE BY DOUGLAS COUNTY IN 1965 (C.S. 54/15). IN 1982 RONALD G. GEISLER, P.L.S. 1988, SUBDIVIDED SECTION 17 (M 93-34) FOR CHAMPION INTERNATIONAL CORP.

REGISTERED PROFESSIONAL LAND SURVEYOR

Richard J. Hintz

RICHARD J. HINTZ
MAY 13, 1980
497

RICHARD J. HINTZ
1890 N. 14th ST.
COOS BAY, OREGON