

COUNTY SURVEYORS FILE DATA  
DO NOT REMOVE FROM OFFICE

# PROPERTY SURVEY FOR INTERNATIONAL PAPER CO. & BUTLER CREEK FARM

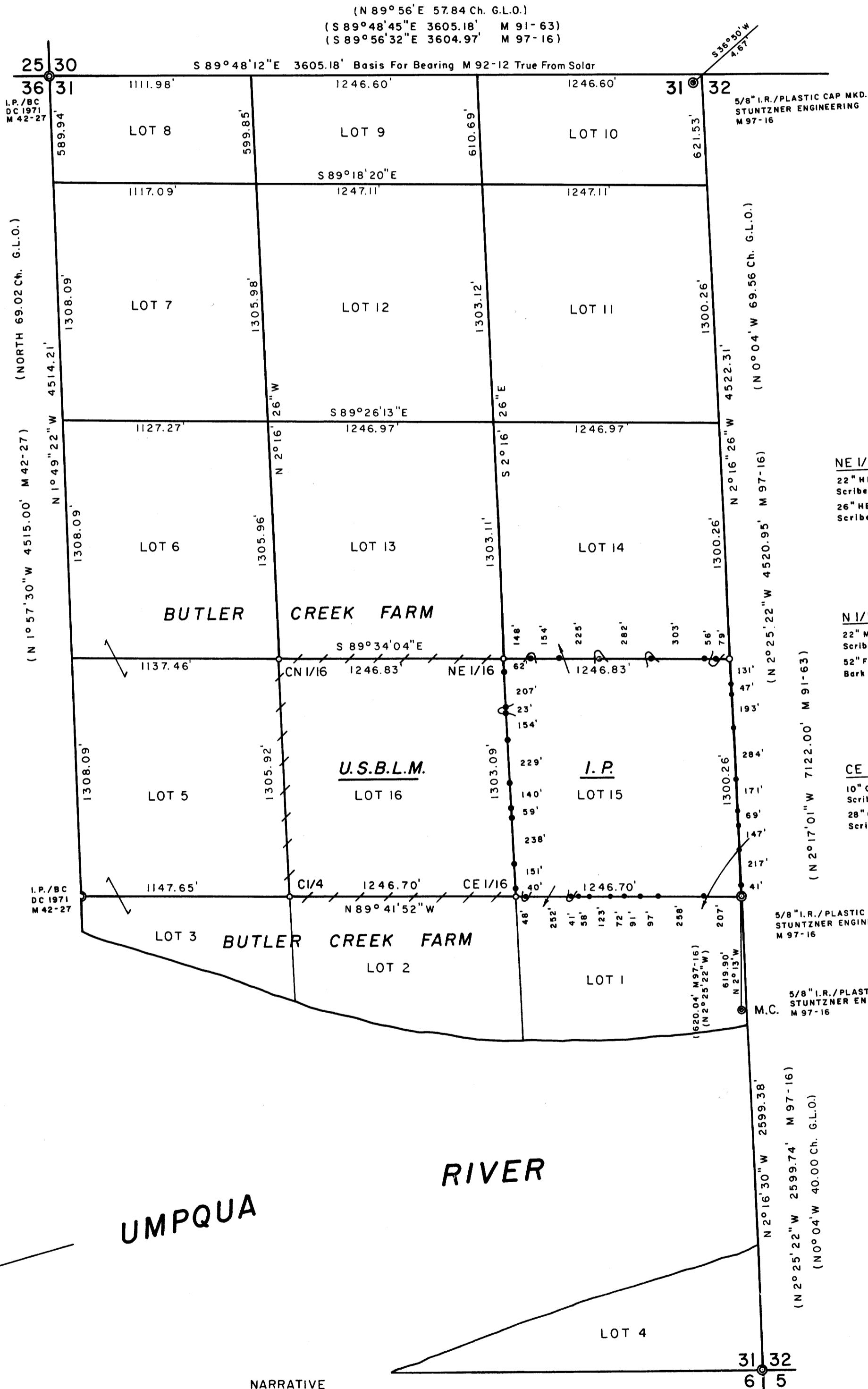
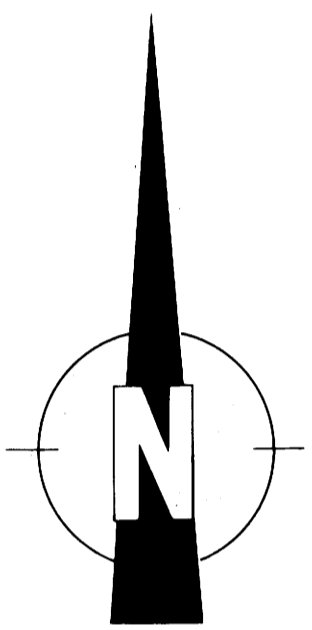
SEC. 31, T 21 S, R 11 W  
SCALE 1" = 500' OCT. 1984

FILED  
RECEIVED *JK*

NOV 8 1984

COUNTY SURVEYOR  
DOUGLAS COUNTY, ORE.

(N 89° 56' E 57.84 Ch. G.L.O.)  
(S 89° 48' 45" E 3605.18' M 91-63)  
(S 89° 56' 32" E 3604.97' M 97-16)



**CN 1/16**  
34" HEMLOCK BRS. N 22° 00' E, 39.0'  
Scribed CN 1/16 BT  
26" ALDER BRS. N 83° 15' W, 33.6'  
Bark Scribed CN 1/16 S 31 BT

**C 1/4**  
24" FIR BRS. N 0° 30' E, 21.8'  
Scribed C 1/4 S 31 BT  
22" CEDAR BRS. N 56° 45' W, 22.3'  
Scribed C 1/4 S 31 BT

**NE 1/16**  
22" HEMLOCK BRS. S 37° 30' W, 12.9'  
Scribed NE 1/16 S 31 BT  
26" HEMLOCK BRS. S 65° 30' W, 18.8'  
Scribed NE 1/16 S 31 BT

**N 1/16**  
22" MAPLE BRS. N 77° 45' E, 41.3' To 50d NL. In Face  
Scribed N 1/16 S 32 BT  
52" FIR SNAG BRS. S 3° 30' W, 92.8' To 50d NL. In Face  
Bark Scribed N 1/16 S 31 BT

**CE 1/16**  
10" GRAND FIR BRS. S 7° 30' E, 25.8'  
Scribed CE 1/16 S 31 BT  
28" GRAND FIR BRS. S 69° 30' W, 37.8'  
Scribed CE 1/16 S 31 BT

### LEGEND

CORNERS FOUND ©  
SET 1/4 x 36" I.P.'S/STAMPED BRASS CAPS (PLS 497) ○  
SET 1/2 x 60" I.R.'S/ATTACHED ALUMINUM PROPERTY LINE SIGNS AND  
LINES MARKED WITH RED PAINTED BLAZES  
LINES MARKED WITH STEEL FENCE POSTS  
(FORMER SURVEYS)

### NOTES

DISTANCES ARE TAKEN TO A 50d NAIL IN THE CENTER OF EACH  
BEARING TREE, EXCEPT AS NOTED.

### NARRATIVE

THE SOUTH 1/4 SECTION CORNER WAS NOT ORIGINALLY ESTABLISHED, AND  
UPON ADVICE FROM THE B.L.M. OFFICES IN PORTLAND AND COOS BAY, THE  
NORTH AND SOUTH CENTERLINE OF SECTION 31 WAS MADE PARALLEL WITH  
THE EAST BOUNDARY OF THE SECTION. THIS WAS DONE TO PROTECT THE LOT-  
TINGS AND AREAS RETURNED ON THE ORIGINAL PLAT. THE EAST AND WEST  
CENTERLINE WAS SURVEYED IN A STRAIGHT LINE BETWEEN THE 1/4 SECTION  
CORNER OF SECTIONS 31 AND 32 AND THE 1/4 SECTION CORNER FOR SECTION 31  
ONLY. THE CENTER 1/4 SECTION CORNER WAS ESTABLISHED AT THE INTERSECTION  
OF THE CENTERLINES. THE CENTER E 1/16 SECTION CORNER WAS ESTABLISHED  
AT THE MIDPOINT, AND THE NORTH 1/16 SECTION CORNER OF SECTIONS 31 AND 32  
WAS ESTABLISHED AT THE PROPORTIONATE POSITION BASED ON THE RECORD OF  
20.00 CHAINS. THE CENTER N 1/16 SECTION CORNER AND THE NE 1/16 SECTION  
CORNER WERE ESTABLISHED AT THE INTERSECTION OF LINES FROM THE APPROP-  
RIATE CONTROLLING CORNERS.

REGISTERED  
PROFESSIONAL  
LAND SURVEYOR

*Richard J. Hintz*  
OREGON  
MAY 13, 1980  
RICHARD J. HINTZ  
497

RICHARD J. HINTZ  
1890 N. 14th ST.  
COOS BAY, OREGON