

Resurvey and Subdivision of NW 1/4 Section 22, T29S, R7W, W. M., Oregon

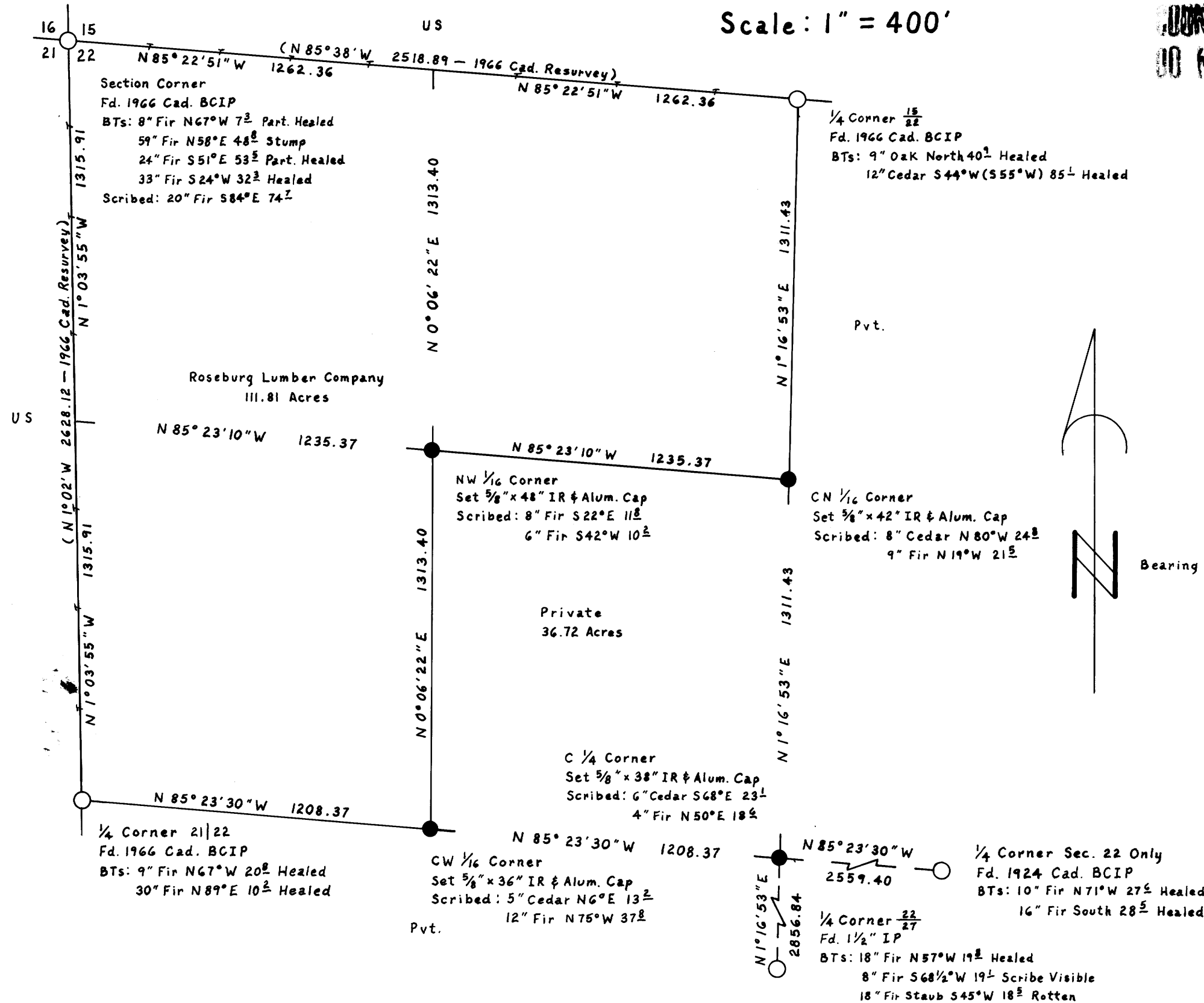
For Roseburg Lumber Company

October 2, 1984

Scale: 1" = 400'

**COUNTY SURVEYORS FILE DATA
DO NOT REMOVE FROM OFFICE**

BS
BS
M 97-54



Legend

- Monument Found
- Set 5/8" IR & Alum. Cap Marked "LS 498"
- Section or Property Line
- Line Referenced to Aluminum Tags
- () Record Data



Bearing Based on Solar Observation

REGISTERED
PROFESSIONAL
LAND SURVEYOR

Howard W. Johnstone

OREGON
MAY 13, 1960
HOWARD W. JOHNSTONE
498

I ran a closed traverse in Section 22 using a Nikon NTD4 six second total station. I achieved a precision of 1:44,312 and adjusted the traverse by the Crandall method. I set the corners by standard subdivision procedure based on the location of the existing monuments.

Howard W. Johnstone P.O. Box 1088 Roseburg, Oregon

M 97-54