

BS
58/289(4)
M 97-51

1/4 CORNER 3 & 4

FND: 1" IRON PIPE WITH G.L.O. BRASS CAP "1945"
42" FIR STUMP, S 63 1/2° E, 31.6' (closed face - 1945 B.T.)
21" FIR STUMP, N 45 1/2° W, 23.7' (closed face - 1945 B.T.)
SET: 7" FIR, N 70° E, 18.2' (scribed - 1/4 S3 BT)
7" FIR, N 60 1/2° W, 14.5' (scribed - 1/4 S4 BT)

1/4 CORNER 3 & 3

FND: 24" FIR STUMP, N 17° E, 10.5' (scribe visible - 1950 B.T.)
28" FIR STUMP, S 6 1/2° W, 12.5' (cut below scribe - original B.T.)
RESET: 1" IRON PIPE WITH G.L.O. BRASS CAP "1950"
(at slope distance from existing B.T.s)
(NOTE: 1/2" REBAR driven in center of B.T. STUMPS and
4" X 4" POST found EAST, 0.5' from corner point)

1/4 CORNER 2 & 3

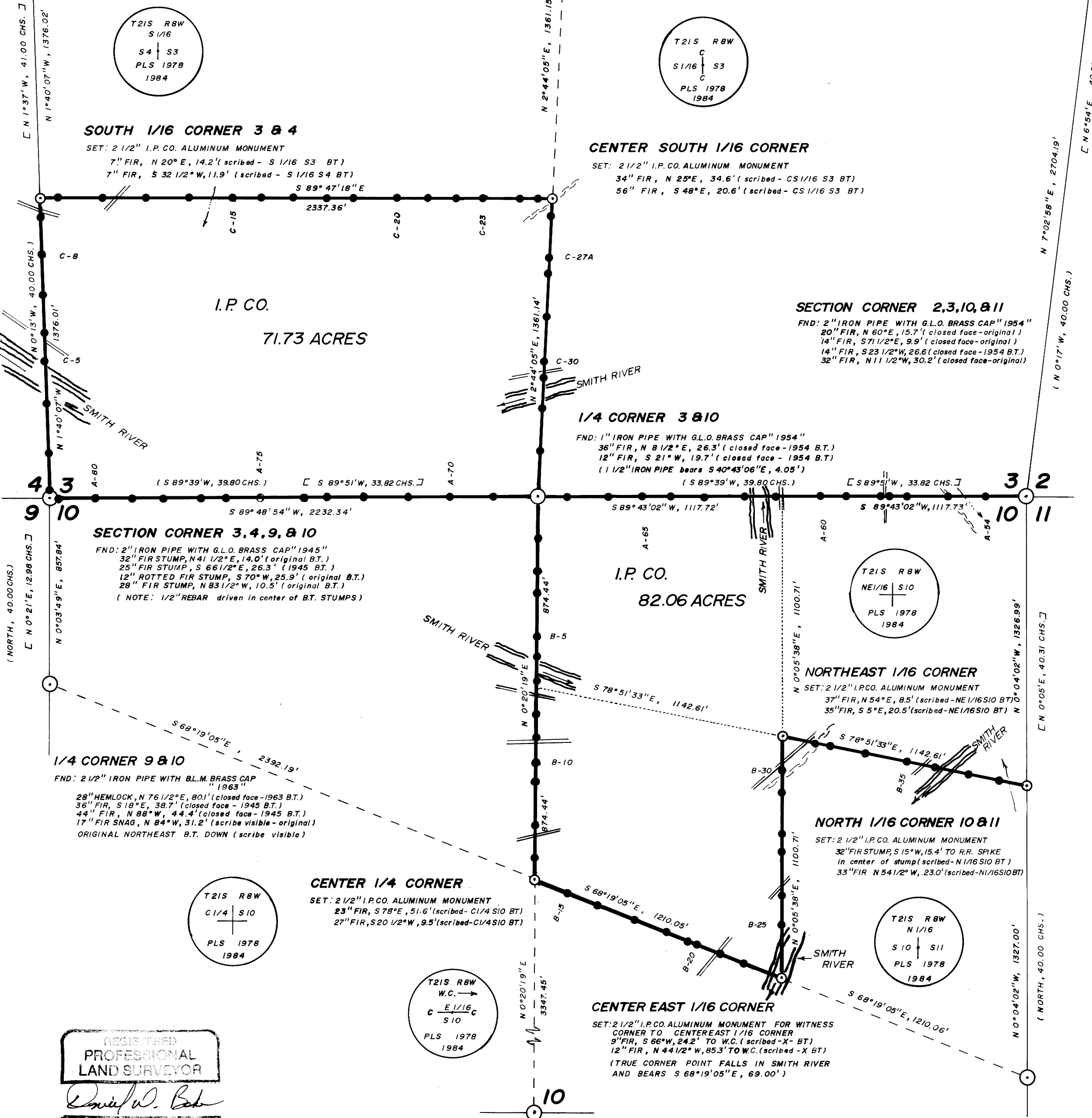
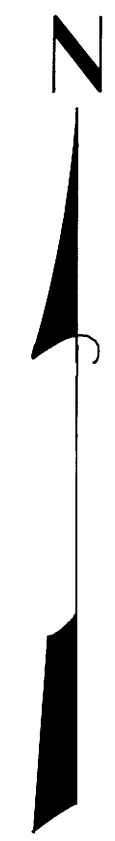
FND: 1" IRON PIPE WITH G.L.O. BRASS CAP "1954"
42" FIR, S 83° E, 101.8' (scribe visible - 1983 BLM B.T.)
15" FIR, N 24° W, 104.0' (scribe visible - 1983 BLM B.T.)

NARRATIVE

THIS SURVEY WAS MADE IN SEPTEMBER AND OCTOBER OF 1984 BY DANIEL W. BAKER OF PEEL BAKER LAND SURVEYING, INC., 1262 LAWRENCE STREET, EUGENE, OREGON. THE PURPOSE OF THIS SURVEY WAS TO LOCATE AND MARK BOUNDARY LINES OF PROPERTY OWNED BY INTERNATIONAL PAPER COMPANY IN SECTIONS 3 AND 10, T21S, R8W, W.M. THIS SURVEY WAS PERFORMED WITH KERN K15 AND K1M THEODOLITES AND KERN DM 502 AND 300 FOOT STEEL TAPE. RANDOM TRANSIT TRAVERSES WERE RUN BETWEEN FOUND CORNERS USED FOR CONTROL, WITH A MINIMUM ERROR OF CLOSURE OF 1/5000'. BEARINGS ARE BASED ON A SOLAR OBSERVATION. OFFSETS TO THE TRUE PROPERTY WERE CALCULATED AND USED TO DETERMINE THE POSITION OF THE TRUE LINE. THE TRUE PROPERTY LINE WAS MARKED IN THE FIELD BY BLAZING TREES (BLAZES PAINTED RED) ON BOTH SIDES OF TRUE LINE AND BY 1/2" X 60" REBAR SET AT RANDOM INTERVALS APPROXIMATELY ON THE TRUE LINE. EACH REBAR WAS REFERENCED BY SWING TIES TO NEARBY TREES WITH ALUMINUM TAGS SHOWING BEARING AND DISTANCE TO THE REBAR. A 4" X 8" YELLOW SIGN MARKED "PROPERTY LINE INTERNATIONAL PAPER CO. GARDINER OREGON" WAS ATTACHED TO EACH REBAR. EACH SIGN WAS STAMPED SHOWING THE TRAVERSE POINT NUMBER, SURVEYOR REGISTRATION NUMBER AND THE DISTANCE (TO THE NEAREST FOOT) AND DIRECTION TO THE NEAREST CORNER MONUMENT. A MAGNETIC LOCATOR WAS BURIED APPROXIMATELY ONE FOOT DEEP AND 1/2 FOOT DISTANT FROM (ON LINE) EACH REBAR. THE 1/4 CORNER BETWEEN SECTIONS 34 AND 3 WAS RESET FROM THE ORIGINAL SOUTHWEST B.T. AND THE NORTHEAST B.T. MARKED IN 1950. THE WEST 1/4 CORNER AND THE SOUTHWEST SECTION CORNER OF SECTION 3 WERE SET IN 1945 BY THE G.L.O. THE EAST 1/4 CORNER AND SOUTHEAST SECTION CORNER OF SECTION 3 AND THE NORTH, SOUTH AND EAST 1/4 CORNERS OF SECTION 10 WERE SET IN 1954 BY THE G.L.O. THE WEST 1/4 CORNER OF SECTION 10 WAS SET IN 1963 BY THE B.L.M. THE CENTER 1/4 CORNER OF SECTION 10 WAS SET AT THE POINT OF INTERSECTION OF THE NORTH-SOUTH AND EAST-WEST CENTERLINES OF THE NORTHEAST QUARTER. THE CENTER 1/16 CORNER OF SECTION 10 WAS SET AT MIDPOINT BETWEEN THE CENTER 1/4 AND THE EAST 1/4 CORNERS. THE NORTH 1/16 CORNER 10 & 11 WAS SET AT MIDPOINT BETWEEN THE NORTH-SOUTH AND EAST-WEST CENTERLINES. THE EAST 1/4 AND THE NORTHEAST SECTION CORNERS. THE CENTER 1/4 CORNER OF SECTION 3 WAS DETERMINED (NOT SET) AT THE POINT OF INTERSECTION OF THE NORTH-SOUTH AND EAST-WEST CENTERLINES. THE WEST 1/4 CORNER OF SECTION 3 WAS SET AT MIDPOINT BETWEEN THE CENTER 1/4 AND SOUTH 1/4 CORNERS. THE SOUTH 1/16 CORNER 3 & 4 WAS SET AT MIDPOINT BETWEEN THE NORTH-SOUTH AND EAST-WEST CENTERLINES OF SECTION 3 UNLESS OTHERWISE NOTED, ALL CORNERS SET IN THIS SURVEY WERE MONUMENTED WITH 2-1/2" X 3" ALUMINUM MONUMENTS MARKED ACCORDING TO THE "MANUAL" AND ALSO MARKED "PLS 1978".

LOCATION OF 1/2" X 60" REBAR

POINT NO.	DISTANCE	DIRECTION TO NEAREST CORNER
SECTION LINE 3 & 10		
NORTHEAST SECTION CORNER		
A-54	184'	EAST
A-55	358'	EAST
A-56	541'	EAST
A-57	626'	EAST
A-58	665'	EAST
A-59	882'	EAST
A-60	937'	EAST
A-61	1089'	WEST
A-62	946'	WEST
A-63	764'	WEST
A-64	608'	WEST
A-65	480'	WEST
A-66	327'	WEST
A-67	135'	WEST
1/4 CORNER 3 & 10		
A-69	200'	EAST
A-70	400'	EAST
A-71	590'	EAST
A-72	790'	EAST
A-73	958'	EAST
A-74	1066'	EAST
A-75	966'	WEST
A-76	810'	WEST
A-77	655'	WEST
A-78	522'	WEST
A-79	385'	WEST
A-80	210'	WEST
A-81	47'	WEST
NORTHWEST SECTION CORNER		
SECTION 10		
1/4 CORNER 3 & 10		
B-2	190'	NORTH
B-3	346'	NORTH
B-4	442'	NORTH
B-5	642'	NORTH
B-6	756'	NORTH
B-7	845'	NORTH
B-8	758'	SOUTH
B-9	649'	SOUTH
B-10	531'	SOUTH
B-11	447'	SOUTH
B-12	247'	SOUTH
B-13	97'	SOUTH
CENTER 1/4 CORNER		
B-15	165'	N 68° W
B-16	310'	N 68° W
B-17	496'	N 68° W
B-18	584'	S 68° E
B-19	458'	S 68° E
B-20	411'	S 68° E
B-21	293'	S 68° E
B-22	186'	S 68° E
W.C. TO CE 1/16	69'	S 68° E
CENTER EAST 1/16 CORNER		
B-25	236'	SOUTH
B-26	370'	SOUTH
B-27	530'	NORTH
B-28	448'	NORTH
B-29	260'	NORTH
B-30	159'	NORTH
NORTHEAST 1/16 CORNER		
B-32	153'	N 79° W
B-33	222'	N 79° W
B-34	393'	N 79° W
B-35	528'	S 79° E
B-36	424'	S 79° E
B-37	267'	S 79° E
B-38	127'	S 79° E
NORTH 1/16 CORNER 10 & 11		
SECTION 3		
SOUTHWEST SECTION CORNER		
C-2	32'	SOUTH
C-3	207'	SOUTH
C-4	426'	SOUTH
C-5	613'	SOUTH
C-6	620'	NORTH
C-7	447'	NORTH
C-8	259'	NORTH
C-9	88'	NORTH
SOUTH 1/16 CORNER 3 & 4		
C-11	87'	WEST
C-12	284'	WEST
C-13	484'	WEST
C-14	682'	WEST
C-15	882'	WEST
C-16	1015'	WEST
C-17	1162'	WEST
C-18	1028'	EAST
C-19	906'	EAST
C-20	705'	EAST
C-21	566'	EAST
C-22	436'	EAST
C-23	316'	EAST
C-24	143'	EAST
C-25	68'	EAST
CENTER SOUTH 1/16 CORNER		
C-27	85'	NORTH
C-27A	269'	NORTH
C-28	346'	NORTH
C-29	546'	NORTH
C-30	615'	SOUTH
C-30A	345'	SOUTH
C-31	403'	SOUTH
C-33	204'	SOUTH
1/4 CORNER 3 & 10		



REGISTERED
PROFESSIONAL
LAND SURVEYOR
Daniel W. Baker
DANIEL W. BAKER

SURVEY IN
SECTIONS 3 & 10, T21S, R8W, W.M.
DOUGLAS COUNTY, OREGON
FOR
INTERNATIONAL PAPER COMPANY
BY
PEEL BAKER LAND SURVEYING, INC.
OCTOBER 25, 1984

M 97-51
58/289(4)