

SURVEY FOR DESCRIPTION

LOCATED IN THE NE 1/4 SEC 13 T27S R6W WM 10 NOT REMOVE FROM OFFICE
 FOR PIETROS CORP.
 DATE SEPTEMBER 1984 SCALE 1"=20'

COUNTY SURVEYORS FILE DATA

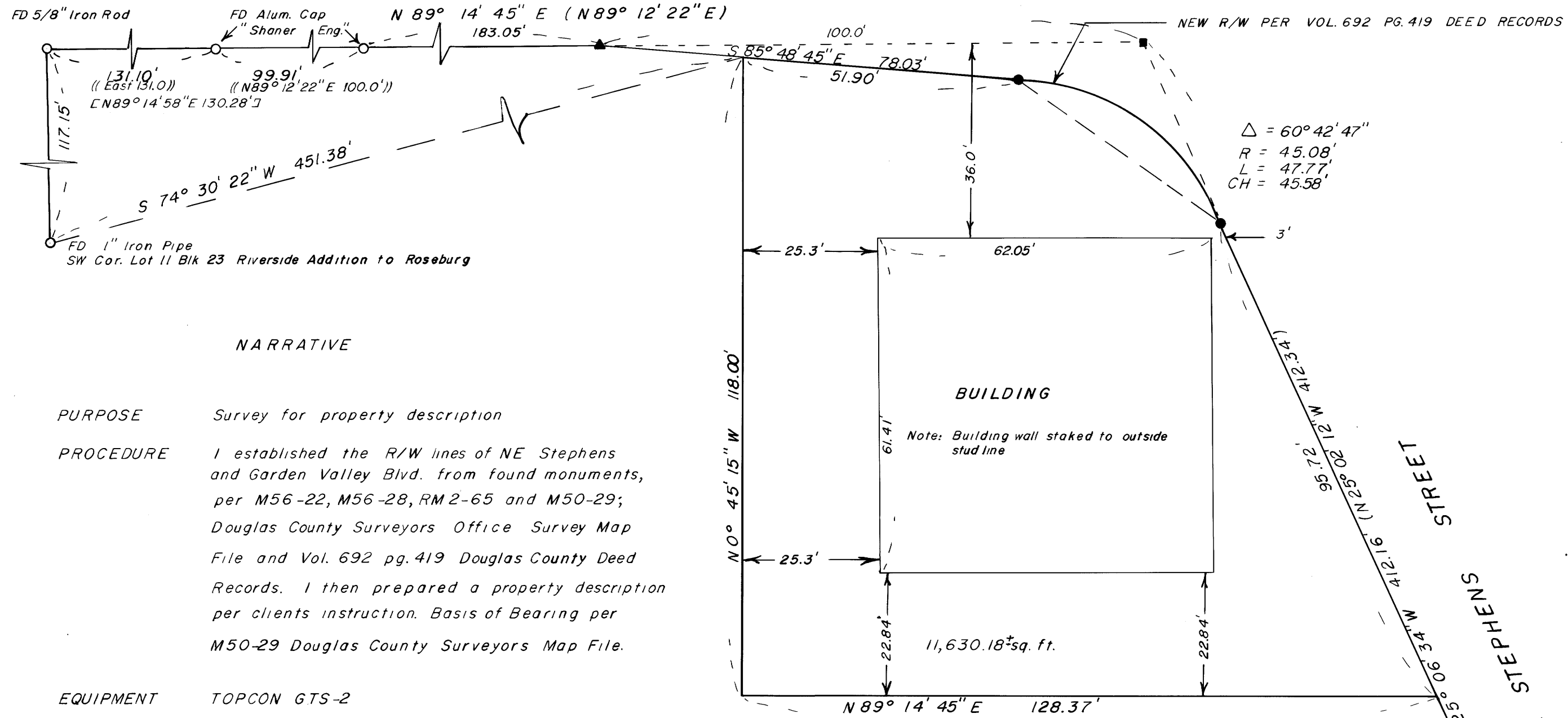
FILED
 RECEIVED

SEP 24 1984

COUNTY SURVEYOR
 DOUGLAS COUNTY, ORE.

GARDEN VALLEY BLVD.

WALNUT STREET



NARRATIVE

PURPOSE Survey for property description

PROCEDURE I established the R/W lines of NE Stephens and Garden Valley Blvd. from found monuments, per M56-22, M56-28, RM2-65 and M50-29; Douglas County Surveyors Office Survey Map File and Vol. 692 pg. 419 Douglas County Deed Records. I then prepared a property description per clients instruction. Basis of Bearing per M50-29 Douglas County Surveyors Map File.

EQUIPMENT TOPCON GTS-2

LEGEND

- ▲ Chisled 'X' in sidewalk
- Found as noted
- PK Nail Set
- Set a 5/8" X 24" iron rod with a plastic cap "A A Surveying Service Inc"
- (—) Data per M56-22, RM2-65
- (—) Data per M56-28
- [—] Data per M50-29 Basis of Bearing

REGISTERED
 PROFESSIONAL
 LAND SURVEYOR

EUGENE A. BLOOM
 MAY 13, 1960
 492

MAP FILE M92-41