

COUNTY SURVEYORS FILE DATA  
DO NOT REMOVE FROM OFFICE

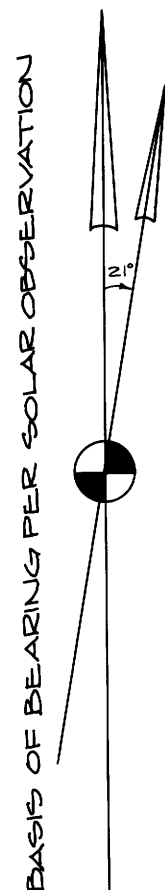
**RECORD OF SURVEY**  
COOKED WASSEN CADASTRAL SURVEY  
FOR THE U.S.D.A. FOREST SERVICE  
SIUSLAW NATIONAL FOREST  
SECTION 16, T21S, R10W, W.M.  
DOUGLAS COUNTY, OREGON  
AUGUST 1984

FILED *2*  
RECEIVED *18*

SEP 6 1984

COUNTY SURVEYOR  
DOUGLAS COUNTY, ORE.

M97-331



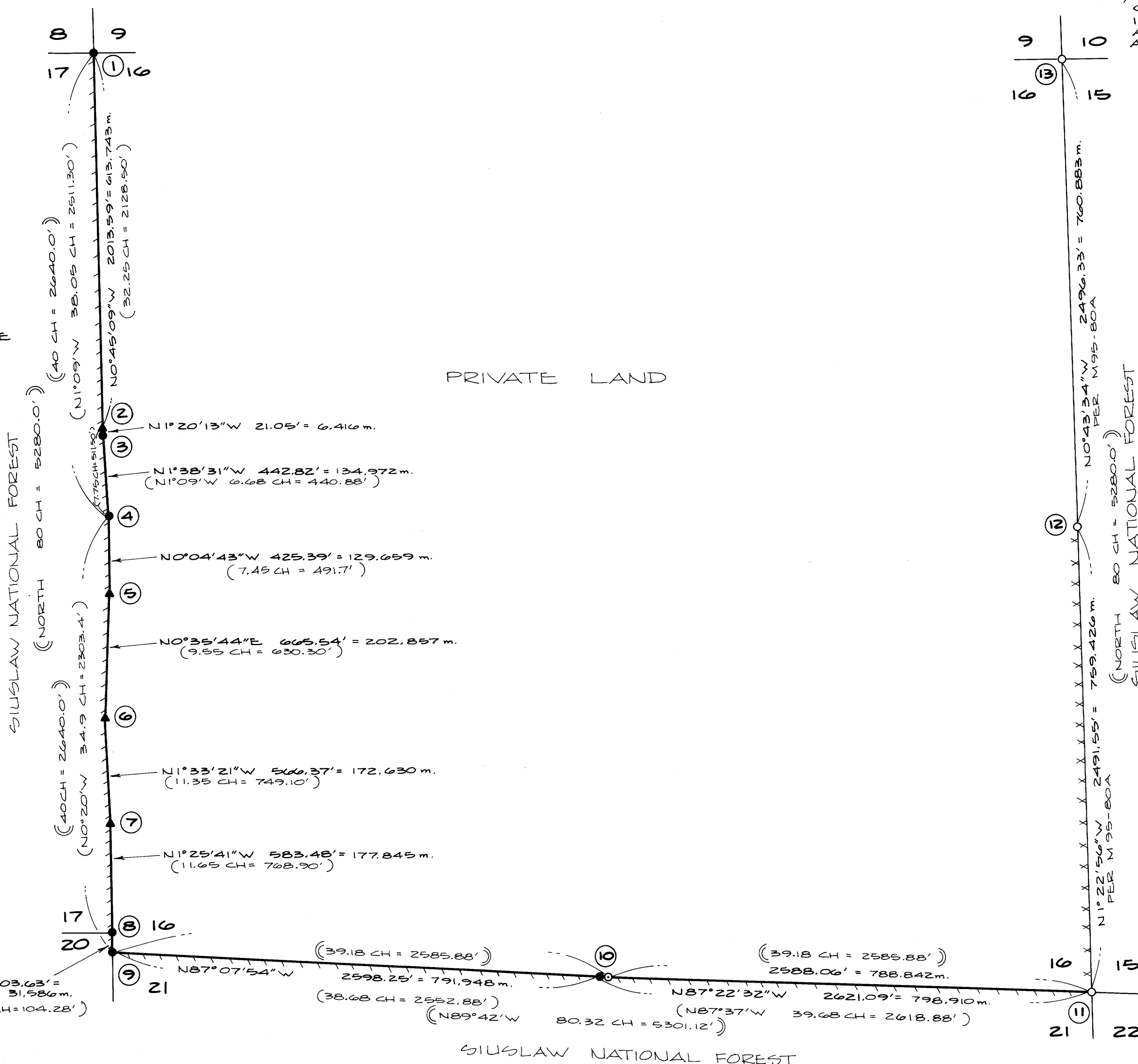
MAGNETIC DECLINATION = 21°E

**LEGEND:**

- - FOUND MONUMENT AS NOTED
- - CORNER REMONUMENTED AS NOTED
- - TRUE CORNER POSITION FROM WITNESS CORNER
- ▲ - FOUND LINE TREE - SET MONUMENT AS NOTED

**NOTES:**

1. BASIS OF BEARINGS AND BEARINGS CHECKS ARE FROM SOLAR OBSERVATIONS.
2. ( ) - INDICATES DATA OF RECORD PER G.L.O. RESURVEY IN 1919, CONTRACT NO. 36
3. ( ) - INDICATES DATA OF RECORD PER G.L.O. SURVEY IN 1879, CONTRACT NO. 342
4. |||| - INDICATES LINES POSTED THIS SURVEY WITH 6 FT. ORANGE FIBERGLASS POSTS
5. XXX - INDICATES LINE PREVIOUSLY POSTED



I, HERMAN A. PIESKE, REGISTERED LAND SURVEYOR IN THE STATE OF OREGON, HEREBY CERTIFY THAT THIS PLAT AND THE NOTES HEREON ARE A CORRECT REPRESENTATION OF A SURVEY I PERFORMED DURING JUNE 1983 - AUGUST 1984 AT THE REQUEST OF THE U.S.D.A. FOREST SERVICE IN ACCORDANCE WITH THE STATUTES OF THE STATE OF OREGON AND THE ARTICLES OF MY CONTRACT.

*Herman A. Pieske*  
HERMAN A. PIESKE  
P.L.S. 1651

**NARRATIVE:**

**PURPOSE:**

TO MONUMENT AND MARK THE BOUNDARIES BETWEEN THE U.S.D.A. FOREST SERVICE LANDS AND PRIVATE OWNERSHIP.

**HISTORY:**

A HISTORY OF PRIOR SURVEYS WHICH PERTAIN TO THIS SURVEY IS AS FOLLOWS:  
IN 1879, WM. THEIL, UNDER CONTRACT NO. 342, SURVEYED SECTION 16.  
IN 1919, FRED W. RODOLF, ELMER F. STRICKLER, GERALD A. SORRELS, FRED MENSCH AND CHARLES COLLIER, UNDER CONTRACT NO. 36, RESURVEYED THE WEST AND SOUTH LINES OF SECTION 16.  
IN 1977, DOUGLAS COUNTY SURVEYOR REMONUMENTED THE NE CORNER OF SECTION 16.

**PROCEDURE:**

THIS SURVEY WAS ACCOMPLISHED BY RANDOM TRAVERSE TYING INTO EXISTING CONTROL. ALL EXISTING CORNERS AND LINE TREES WERE TIED INTO A CLOSED TRAVERSE. FOUR OF THE EIGHT LINE TREES RECORDED IN THE 1879 G.L.O. SURVEY NOTES WERE FOUND AND USED AS A.P.'S ON THE WEST LINE OF SECTION 16. R.M.'S WERE SET AS REFERENCED TO THE LINE TREES. THE MAJORITY OF THE 1919 G.L.O. CORNERS WERE REMONUMENTED BECAUSE OF DETERIORATION. THE EAST 1/4 CORNER WAS FOUND AND IS NOTED IN THE SURVEY OF SECTION 15, AS RECORDED, UNDER MAP FILE M95-80A, LAKE COUNTY SURVEYORS OFFICE.

THE CORNERS REMONUMENTED WERE DONE ACCORDING TO THE 1973 BLM MANUAL OF SURVEYING INSTRUCTIONS.

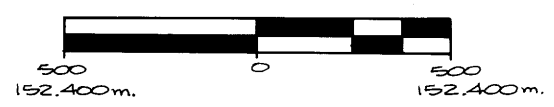
THE INSTRUMENTS USED ON THIS SURVEY WERE: TOPCON GT3-2, A STAFF COMPASS TO DETERMINE B.T. BEARINGS.

REFERENCE FIELD BOOKS: #1 - #20.

REGISTERED  
PROFESSIONAL  
LAND SURVEYOR

*Herman A. Pieske*

OREGON  
JULY 14, 1971  
HERMAN A. PIESKE  
1651



SCALE: 1" = 500'  
3.28083 FEET = ONE METER

PREPARED BY:  
AA SURVEYING SERVICE, INC., P.O. BOX 130, ROSEBURG, OREGON 97470

M97-331