



# RECORD OF SURVEY

## COOKED WASSER CADASTRAL SURVEY FOR THE U.S.D.A. FOREST SERVICE

### SIUSLAW NATIONAL FOREST

#### SECTION 16, T21S, R10W, W.M. DOUGLAS COUNTY, OREGON AUGUST 1984

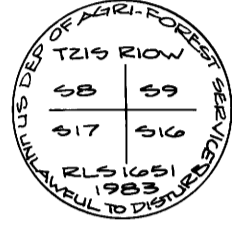
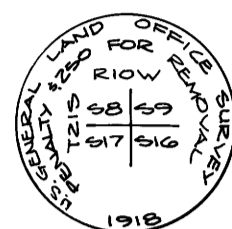
COUNTY SURVEYORS FILE DATA  
NOT REMOVE FROM OFFICE

FILED  
1984  
AUG 14  
DOUGLAS COUNTY, OREGON

M97-33B

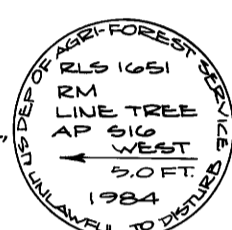
**① SECTION CORNER 8-9-16-17**

FOUND IRON PIPE, WITH BRASS CAP BROKEN OFF, AND STONE ALONGSIDE, MKD. AS SHOWN.  
FOUND B.T.'S:  
16" MAPLE BEARS N73°E 8.0 FT. (REG. N61°E 8.6 FT.) 1919 B.T.  
24" FIR BEARS S69°E 27.4 FT. (REG. S71°E 27.7 FT.) 1919 B.T.  
28" FIR BEARS S58°W 21.8 FT., SCRIBED "S17 BT"  
20" FIR BEARS N13°W 42.5 FT., SCRIBED "S8 BT"  
SET 2 1/2" x 30" ALUM. PIPE, 20" IN THE GROUND, WITH 3/4" ALUM. CAP MKD. AS SHOWN, WITH IRON PIPE AND STONE BURIED ALONGSIDE.



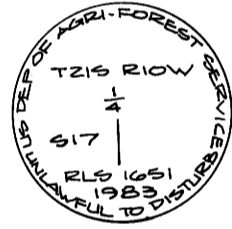
**② LINE TREE A.P. SECTION 16**

FOUND 36" D FIR (ORIG. 16") WITH NOTCHES ON NORTH AND SOUTH SIDES.  
SET REFERENCE MONUMENT: 2 1/2" x 30" ALUM. PIPE, 20" IN THE GROUND, WITH 3/4" ALUM. CAP MKD. AS SHOWN.



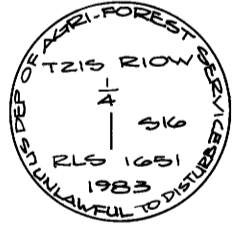
**③ 1/4 CORNER SECTION 17 ONLY**

FOUND 1919 GLO IRON PIPE AND BRASS CAP, BRASS CAP BROKEN OFF AND LAYING ALONGSIDE STUB OF PIPE.  
FOUND B.T.'S:  
18" D FIR BEARS N69°W 30.4 FT. (ORIG. B.T., REG. 29.7 FT.), WITH HEALED FACE  
14" D FIR SNAG BEARS S79°W 26.4 FT. (ORIG. B.T., REG. S81°W 26.4 FT.), NO MARKS REMAINING  
SET 2 1/2" x 30" ALUM. PIPE, 24" IN THE GROUND, WITH 3/4" ALUM. CAP MKD. AS SHOWN. SET ALONGSIDE REMAINS OF CORNER SET BY GLO. NEW B.T.'S SCRIBED:  
38" D FIR BEARS S3°W 29.1 FT., SCRIBED "1/4 S17 BT"



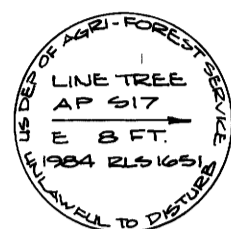
**④ 1/4 CORNER SECTION 16 ONLY**

FOUND 1" IRON PIPE WITH CAP BROKEN OFF (1919 SURVEY)  
FOUND B.T.'S:  
24" CEDAR BEARS N86°E 7.5 FT. (ORIG. 18", REG. 6.6 FT.), FRAGMENTARY MARKS VISIBLE ON PARTIALLY HEALED FACE. (REG. S.86°E.)  
42" D FIR BEARS S51°W 12.5 FT. (ORIG. 36"), WITH HEALED FACE  
SET 2 1/2" x 30" ALUM. PIPE, 24" IN THE GROUND, AT REMAINS OF BROKEN 1919 GLO CORNER, WITH 3/4" ALUM. CAP MKD AS SHOWN. BURIED 1" IRON PIPE ALONGSIDE.



**⑤ LINE TREE A.P. SECTION 17**

FOUND 72" D FIR (ORIG. 60") WITH 2 NOTCHES ON NORTH SIDE IN BARK. NONE ON SOUTH SIDE.  
SET REFERENCE MONUMENT: 2 1/2" x 30" ALUM. PIPE, 20" IN THE GROUND, WITH 3/4" ALUM. CAP MKD. AS SHOWN.



**⑥ LINE TREE A.P. SECTION 16**

FOUND 66" D FIR (ORIG. 60") WITH 1 HACK IN BARK ON NORTH SIDE OF TREE. ALSO 1 HACK VISIBLE ON SOUTH SIDE OF TREE.  
SET REFERENCE MONUMENT: 2 1/2" x 30" ALUM. PIPE, 20" IN THE GROUND, WITH 3/4" ALUM. CAP MKD. AS SHOWN.



**⑦ LINE TREE A.P. SECTION 17**

FOUND 72" D FIR (ORIG. 60") WITH 2 NOTCHES IN BARK ON NORTH SIDE OF TREE. 16" HEM. GROWING UP ON SOUTH FACE OF TREE. NO MARKS VISIBLE.  
SET REFERENCE MONUMENT: 2 1/2" x 30" ALUM. PIPE, 22" IN THE GROUND, WITH 3/4" ALUM. CAP MKD. AS SHOWN.



**⑧ SECTION CORNER 17-20**

FOUND 2" IRON PIPE WITH CAP BROKEN OFF. CONCRETE STEM IS ALL THAT REMAINS.  
FOUND B.T.'S:  
36" HEMLOCK BEARS N29°W 23.8 FT. (ORIG. B.T. 30"), HEALED FACE  
16" HEMLOCK BEARS S64°W 36.5 FT. (ORIG. B.T. 10", REG. S67°W 48.8 FT.) WITH HEALED FACE  
SET 2 1/2" x 30" ALUM. PIPE, 20" IN THE GROUND, WITH 3/4" ALUM. CAP MKD. AS SHOWN.



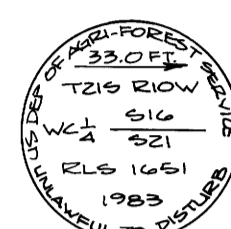
**⑨ SECTION CORNER 16-21**

FOUND 2" IRON PIPE WITH CONCRETE STEM. BRASS CAP MISSING.  
FOUND B.T.'S:  
10" MAPLE BEARS N23°E 16.5 FT. (ORIG. 7" B.T., REG. N25°E 15.4 FT.) WITH HEALED FACE  
14" FIR SNAG BEARS S73°E 27.7 FT. (ORIG. B.T.) (REG. 27.5 FT.) WITH HEALED FACE  
SET 2 1/2" x 30" ALUM. PIPE, 18" IN THE GROUND, WITH 3/4" ALUM. CAP MKD AS SHOWN.  
NEW B.T. SCRIBED:  
8" D FIR BEARS S18°E 3.2 FT. SCRIBED "T21S R10W S21 BT"  
TREE IS ON TOP OF ROCK BLUFF 8 FT. ABOVE CORNER



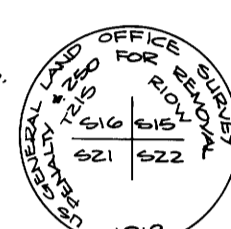
**⑩ WITNESS CORNER 1/4 CORNER SECTIONS 16-21**

FOUND 1" IRON PIPE FILLED WITH CONCRETE. NO CAP. FOUND CHARCOAL IN HOLE.  
FOUND B.T.'S:  
20" ALDER BEARS N46°W 25.1 FT. (ORIG. B.T., REG. N48°W)  
24" CEDAR BEARS S40°E 45.5 FT. (ORIG. B.T., REG. S41°E)  
SET 2 1/2" x 30" ALUM. PIPE, 22" IN THE GROUND, WITH 3/4" ALUM. CAP MKD. AS SHOWN.



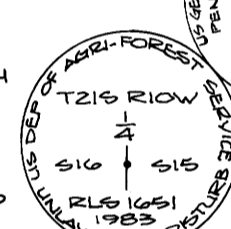
**⑪ SECTION CORNER 15-16-21-22**

FOUND BADLY RUSTED PIPE WITH 2 1/2" BRASS CAP MKD. AS SHOWN.  
FOUND 2 1/2" x 30" ALUM. PIPE WITH 3" ALUM. CAP MKD. AS SHOWN.  
FOUND B.T.'S:  
15" ALDER (GROWING OUT OF OLD STUMP) BEARS N50°W 57.6 FT. (ORIG. B.T.)  
55" HEMLOCK BEARS N73°E 23.3 FT., WITH VISIBLE SCAR AND SOME AXE MARKS  
33" ALDER BEARS S59°W 95.2 FT., BARK SCRIBED "T21S R10W S21 BT"  
52" CEDAR BEARS S12°E 56.0 FT., FACED AND SCRIBED "T21S R10W S22 BT"



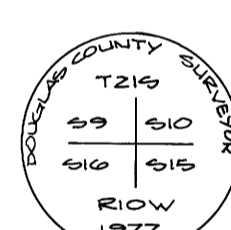
**⑫ 1/4 CORNER SECTIONS 15-16**

FOUND BADLY RUSTED 1" IRON PIPE FILLED WITH CONCRETE WITH 2 1/2" BRASS CAP MKD AS SHOWN.  
FD. 2 1/2" x 30" ALUM. PIPE, 24" IN THE GROUND, WITH 3" ALUM. CAP MKD. AS SHOWN. BURIED GLO MONUMENT NORTH OF PIPE.  
FD. B.T.'S SCRIBED:  
17" CEDAR BEARS S50°W 34.6 FT., FACED AND SCRIBED "1/4 S16 BT"  
30" CEDAR BEARS S80°E 3.7 FT., FACED AND SCRIBED "1/4 S15 BT"



**⑬ SECTION CORNER 9-10-15-16**

FOUND 1" IRON PIPE WITH 2 1/4" BRASS CAP MKD. AS SHOWN (TOP)  
FOUND 2" IRON PIPE (O.D.) WITH 2 1/2" BRASS CAP MKD. AS SHOWN (BOTTOM) BEARS SOUTH 0.18 FT. AND 0.2 FT. LOWER FROM 1" PIPE.  
FOUND B.T.'S:  
36" HEMLOCK BEARS N21°W 23.6 FT., GOOD SCAR  
38" HEMLOCK BEARS S75°E 12.6 FT., GOOD SCAR  
14" HEMLOCK BEARS S17°W 19.1 FT., SHOWS SCRIBING "T21S R10W S16 CS BT"



ALL NEW B.T.'S HAVE BRASS WASHER MKD. "RLS 1651" NAILED TO LOWER BLAZE, ATTENTION SIGNS ON BACK AND RED BANDS PAINTED ON.

REGISTERED  
PROFESSIONAL  
LAND SURVEYOR  
*Herman A. Pieske*  
OREGON  
JULY 14, 1975  
HERMAN A. PIESKE  
1651

M97-33B