

**SURVEY TO SET PROPERTY CORNERS IN LOT 60 MELROSE ORCHARDS  
LOCATED IN NW 1/4 SEC. 36 T26S R7W WM**

FOR DONALD NEFF BY AA SURVEYING SERVICE, INC. P.O. BOX 130 ROSEBURG, OR 97470  
SCALE 1"=100' DATE SEPTEMBER 1984

COUNTY SURVEYORS FILE DATA  
DO NOT REMOVE FROM OFFICE

FILED  
RECEIVED  
AUG 31 1984  
COUNTY SURVEYOR  
DOUGLAS COUNTY, ORE

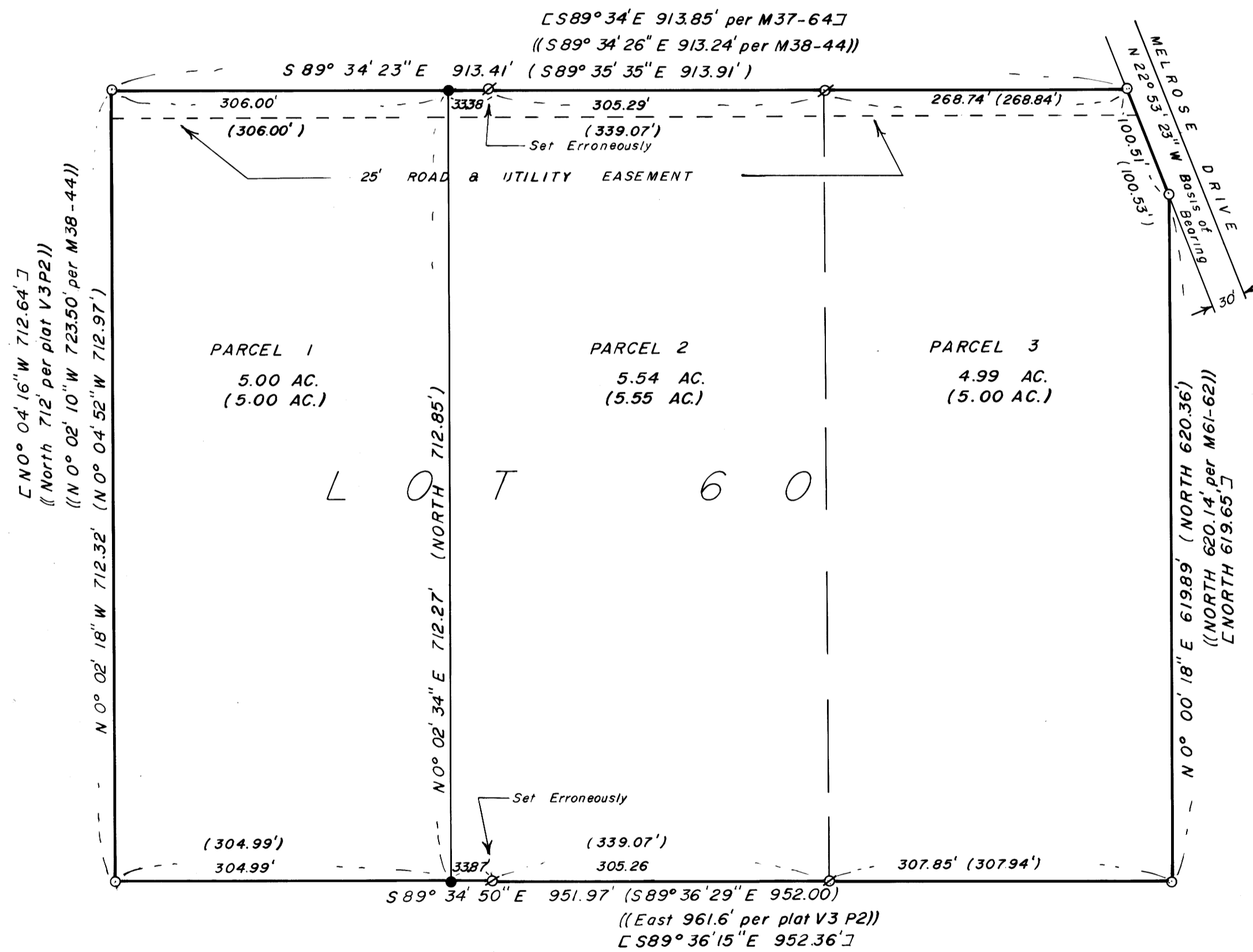
MAP FILE M 97-30

**NARRATIVE**

**PURPOSE:** TO CORRECTLY SET THE PROPERTY CORNERS COMMON TO PARCELS ONE AND TWO PER MINOR LAND PARTITION VOL. 6 PG. 76 DOUGLAS COUNTY DEED RECORDS INSTRUMENT NO. 80-08302 AND MAP FILE M83-79 DOUGLAS COUNTY SURVEYORS OFFICE

**PROCEDURE:** ALL FOUND MONUMENTS WERE TIED IN A CLOSED TRAVERSE. POSITIONS FOR MONUMENTS SET WERE CALCULATED ACCORDING TO DESCRIPTIONS RECORDED IN THE ABOVE SAID MINOR LAND PARTITION.

**EQUIPMENT:** LEITZ TM-20



REGISTERED  
PROFESSIONAL  
LAND SURVEYOR  
*Walter A. Bloom*  
EUGENE A. BLOOM  
292

**LEGEND**

- FD. 3/4" iron rod M37-64
- SET 5/8" X 30" iron rod w/plastic cap "AA SURVEYING SERVICE, INC"
- ⊗ FD 5/8" iron rod M83-79
- (-) DATA per M83-79 Basis of Bearing
- ((-)) DATA as shown
- [ ] DATA per M37-64

MAP FILE M 97-30