

COUNTY SURVEYORS FILE DATA
DO NOT REMOVE FROM OFFICE

SURVEY FOR U.S. FOREST SERVICE
IN SECTIONS 21 AND 28, T. 32 S., R. 3 W., W.M.
DOUGLAS COUNTY, OREGON

FILED
RECEIVED *ll*
AUG 27 1984
COUNTY SURVEYOR
DOUGLAS COUNTY, ORE.

BY: JAMES N. LANDRUM
P.O. BOX 1008, ROSEBURG, OREGON

MAY, 1984 SCALE 1" = 400'

Survey Narrative

Survey Location and Purpose

A dependent resurvey of Homestead Entry Survey No. 186, located in Sections 21 and 28 of T.32S., R.3W., W.M., was performed from April 1982 to April 1983 for the U.S. Forest Service, Umpqua National Forest, by James N. Landrum, R.L.S. The purpose of the survey was to retrace the H.E.S. boundary and post property lines between the U.S. Forest Service and private lands.

Survey History

Section 28, T.32S., R.3W., W.M., was originally surveyed by Fred Mensch, U.S. Cadastral Engineer, in 1913 under Special Instructions for Group No. 14. H.E.S. No. 186 was originally surveyed by Fredrick W. Rase, Forest Service Surveyor, in 1916 under Special Instructions dated February 3, 1916. The Douglas County Surveyors Office set brass caps at all H.E.S. No. 186 corners, except Nos. 10 and 17, in 1969 and 1975. Baughman Surveying Service performed retracements of Section 22 in August 1974 and Section 21 in July 1975.

Survey Procedure

A closed loop, random line traverse was run between found corner points tied by this survey. The basis of bearing is the west line of the southwest 1/4 of Section 22, T.32S., R.3W., W.M., as recorded by Baughman Surveying Service, Douglas County File No. M49-69. Angles were measured with a Zeiss TH3 theodolite. Distances were measured with a Mac-1E EDM.

Project personnel were James Landrum, O.R.L.S. No. 2024, assisted by Leonard Herzstein, Jim Hamilton, and Randy Lopez.

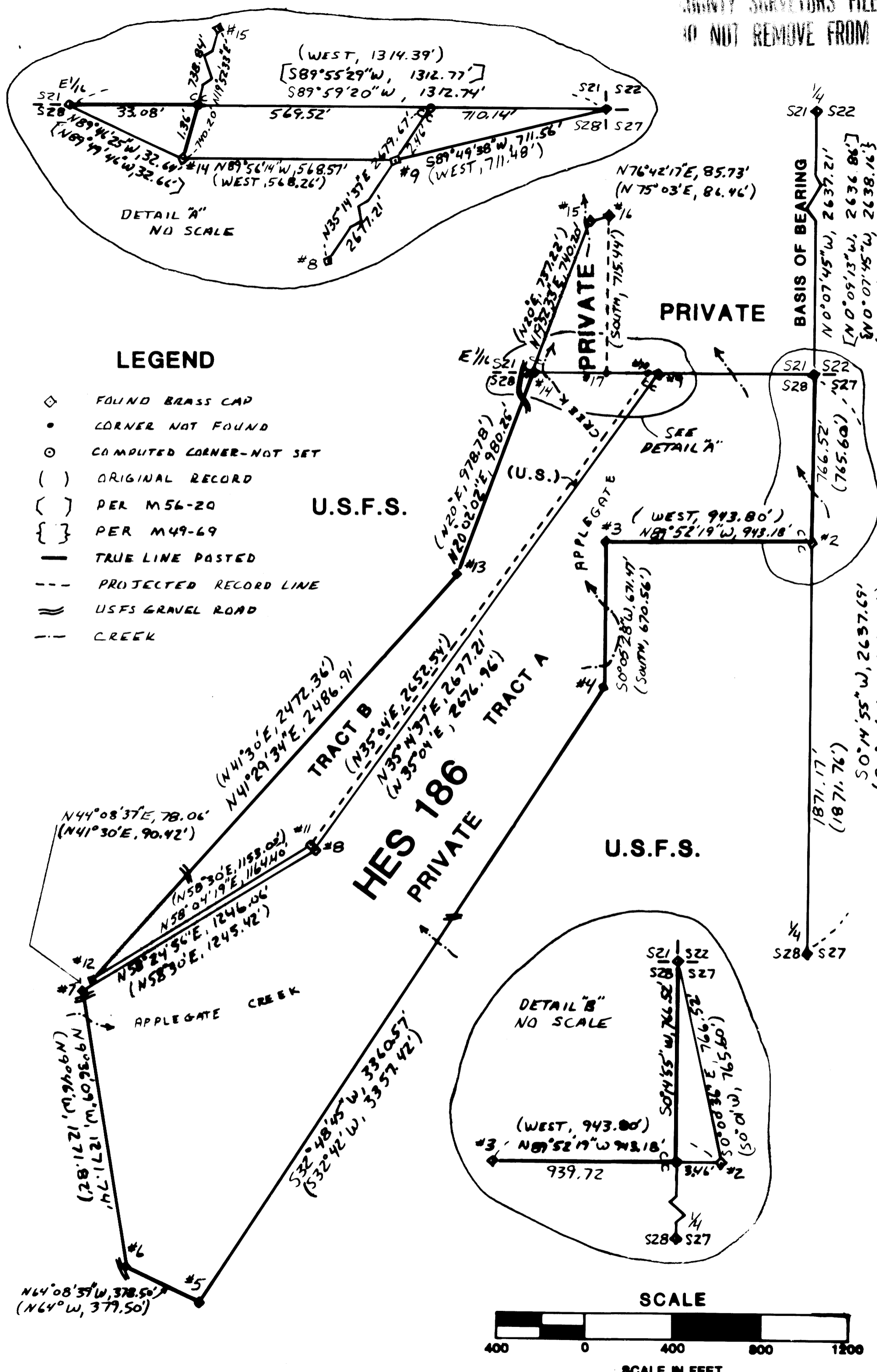
All found corner positions were accepted and true points for closing corners were computed at Corners No. 2, 9, and 14. True closing corner positions were not monumented and the Forest Service boundary was posted to the computed true positions.

Steel fence posts with U.S.F.S. 54-2 signs attached were set by offsets from random line traverse points using compass, clinometer, and 100-foot steel tape. The survey meets U.S.F.S. precision standards of 1:5,000 closure.

A road exemption lying between Tracts A and B was not posted.

U.S.F.S. 54-3 and 54-4 signs attached to all bearing trees. Bearing tree blazes and 6" band painted red.

Corners and accessories found as described in Douglas County records.



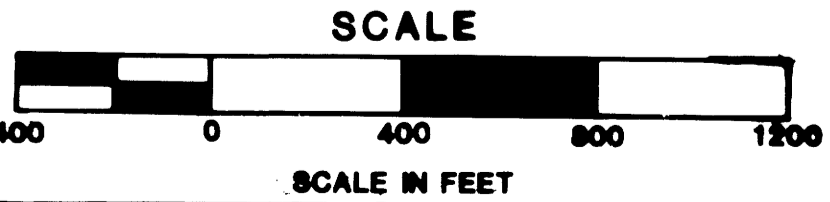
LEGEND

- ◇ FOUND BRASS CAP
- CORNER NOT FOUND
- COMPUTED CORNER-NOT SET
- () ORIGINAL RECORD
- { } PER M56-20
- { } PER M49-69
- TRUE LINE POSTED
- - - PROJECTED RECORD LINE
- ≡ USFS GRAVEL ROAD
- - - CREEK

U.S.F.S.

U.S.F.S.

U.S.F.S.



I, JAMES N. LANDRUM, a registered professional land surveyor in the State of Oregon, hereby certify that this plat and the notes hereon, or attached, are a correct representation of a survey performed during 1982 and 1983 for the U.S. Forest Service, in accordance with the statutes of the State of Oregon.

REGISTERED PROFESSIONAL LAND SURVEYOR
James N. Landrum
JAMES N. LANDRUM
P.O. BOX 1008
ROSEBURG, OREGON 97132

MAP FILE M27-27

MAP FILE M27-27