

COUNTY SURVEYORS FILE DATA  
DO NOT REMOVE FROM OFFICE

# SURVEY TO SET LOT CORNERS

IN LOTS NUMBER 12 AND 13 OF OAK KNOLLS ESTATES SUB.  
SITUATED IN THE NE 1/4 OF SECTION 30, T26S, R5W, W.M.

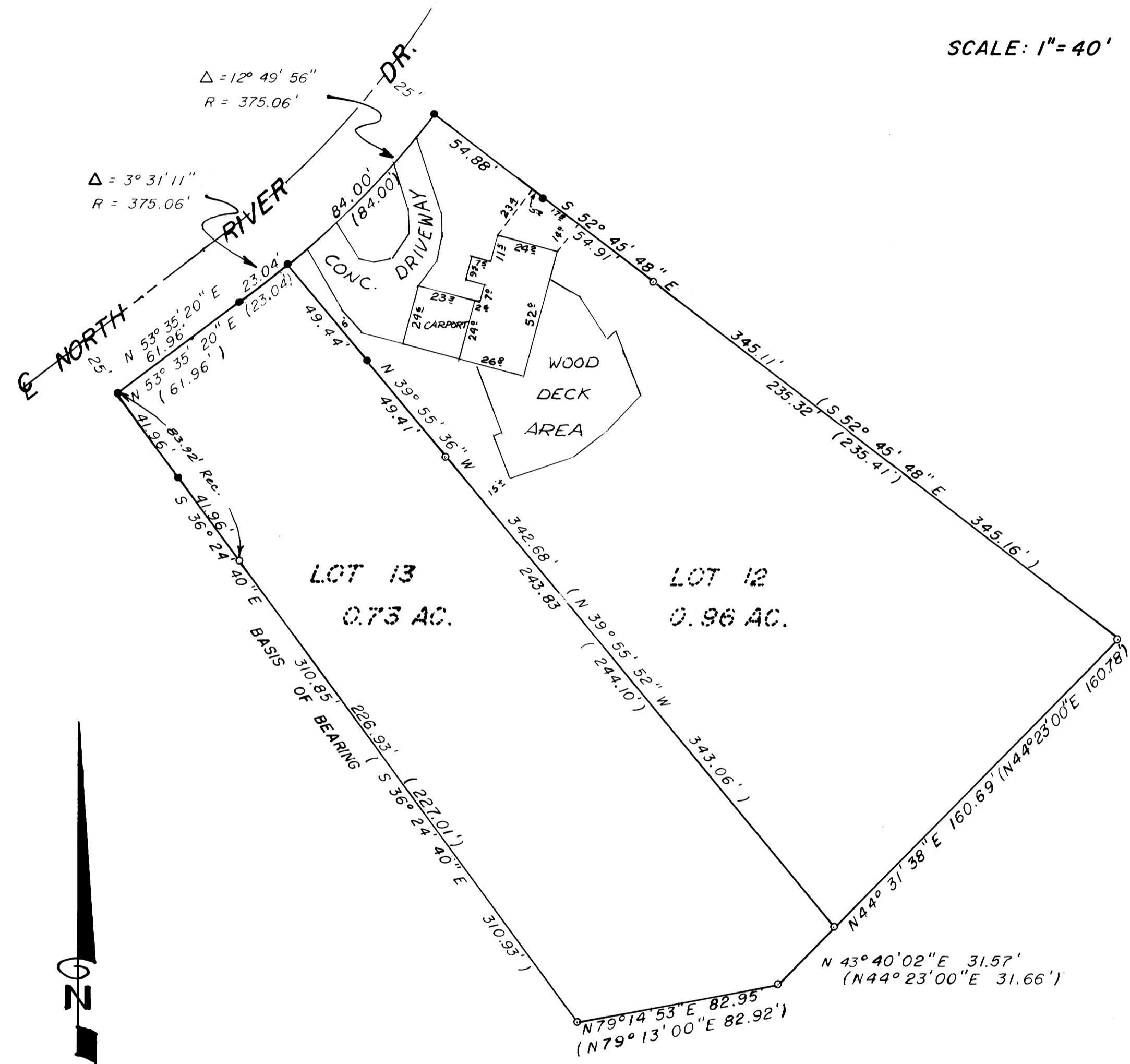
v  
BS  
M 97-17

SURVEYED FOR: RICK SOHN

BY: A A SURVEYING SERVICE INC.  
P.O. BOX 130  
ROSEBURG, ORE. 97470

SCALE: 1"=40'

JULY 1984



- LEGEND**
- - Found 5/8" iron rod
  - - Set 5/8" x 24" iron rod with plastic cap stamped "AA Surveying Service, Inc."
  - ( ) - Record as per plat

**NARRATIVE**

**PURPOSE:**

To locate or reset the monuments for Lot 12 and Lot 13, and set additional property line markers.

**PROCEDURE:**

I found the property corner monuments missing along North River Drive. I tied into the existing monuments shown on the annexed map and re-established the missing corners by projecting the lot lines to the R/W line of North River Drive. The Basis of Bearing is the southwesterly line of Lot 13.

**EQUIPMENT:**

Topcon GTS-2 theodolite EDM

REGISTERED  
PROFESSIONAL  
LAND SURVEYOR

*Eugene A. Bloom*

OREGON  
1837-1900  
EUGENE A. BLOOM  
192

M 97-17