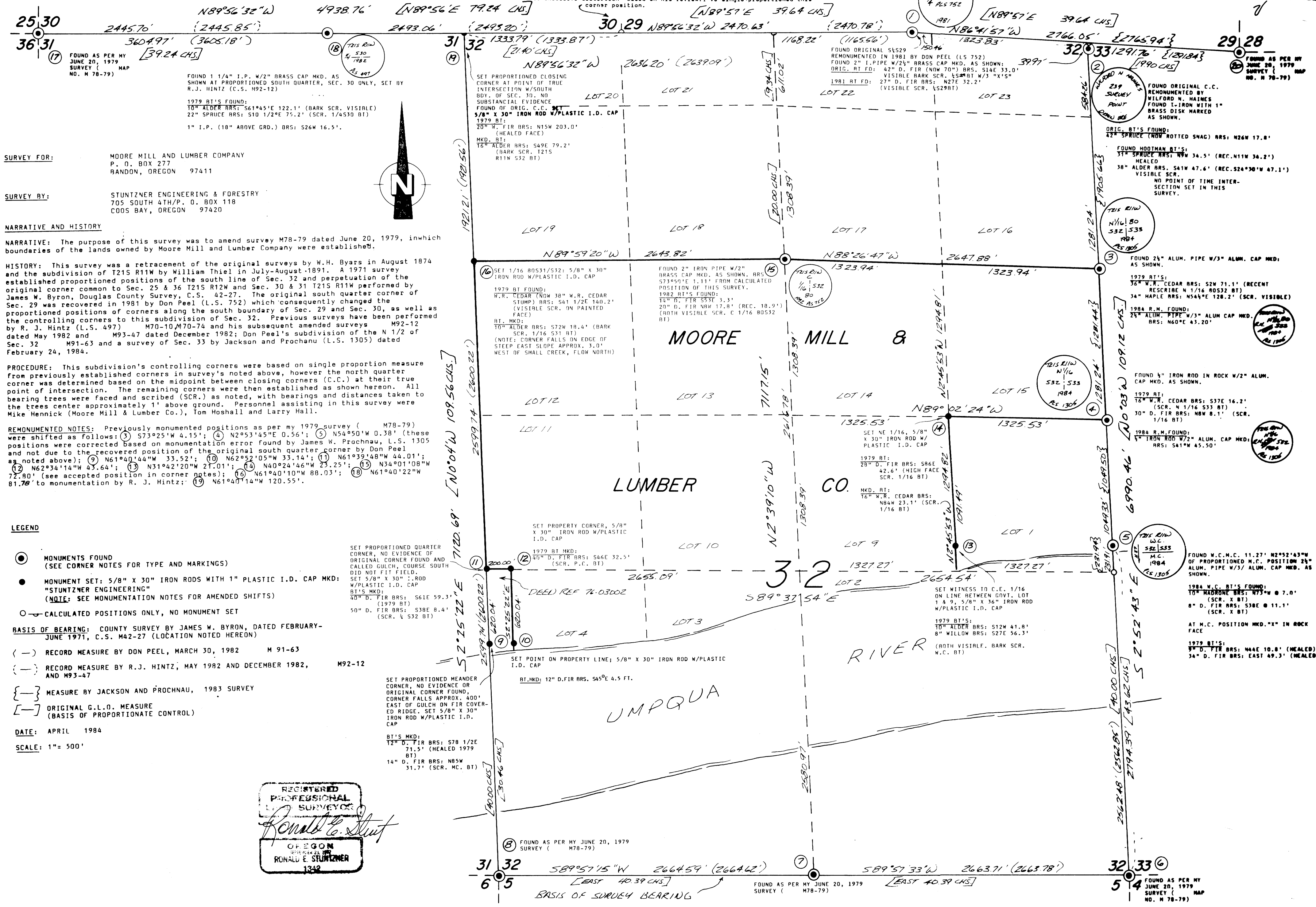


# AMENDED SURVEY LOCATED IN SECTION 32 T.21S. R.11W, W.M., DOUGLAS COUNTY, OREGON

FILED  
RECEIVED  
JUL 30 1984  
COUNTY SURVEYOR  
DOUGLAS COUNTY, ORE.

In reference to monumentation by Don Peel (L.S. 752), Survey No. M 91-63, he states  
"The section corner common to sections 29 & 30 was not reestablished by the three point  
method due to excessive distortion" based on his review. I've single proportioned this  
corner position.



**SURVEY FOR:** MOORE MILL AND LUMBER COMPANY  
P. O. BOX 277  
RANDON, OREGON 97411

**SURVEY BY:** STUNTZNER ENGINEERING & FORESTRY  
705 SOUTH 4TH/P. O. BOX 118  
COOS BAY, OREGON 97420

**NARRATIVE AND HISTORY**

**NARRATIVE:** The purpose of this survey was to amend survey M78-79 dated June 20, 1979, in which boundaries of the lands owned by Moore Mill and Lumber Company were established.

**HISTORY:** This survey was a retracement of the original surveys by W.H. Byars in August 1874 and the subdivision of T21S R11W by William Thiel in July-August 1891. A 1971 survey established proportioned positions of the south line of Sec. 32 and perpetuation of the original corner common to Sec. 25 & 36 T21S R12W and Sec. 30 & 31 T21S R11W performed by James W. Byron, Douglas County Survey, C.S. 42-27. The original south quarter corner of Sec. 29 was recovered in 1981 by Don Peel (L.S. 752) which consequently changed the proportioned positions of corners along the south boundary of Sec. 29 and Sec. 30, as well as the controlling corners to this subdivision of Sec. 32. Previous surveys have been performed by R. J. Hintz (L.S. 497) M70-10, M70-74 and his subsequent amended surveys M92-12 dated May 1982 and M93-47 dated December 1982; Don Peel's subdivision of the N 1/2 of Sec. 32 M91-63 and a survey of Sec. 33 by Jackson and Prochnau (L.S. 1305) dated February 24, 1984.

**PROCEDURE:** This subdivision's controlling corners were based on single proportion measure from previously established corners in survey's noted above, however the north quarter corner was determined based on the midpoint between closing corners (C.C.) at their true point of intersection. The remaining corners were then established as shown hereon. All point of intersection were faced and scribed (SCR.) as noted, with bearings and distances taken to the trees center approximately 1' above ground. Personnel assisting in this survey were Mike Hennick (Moore Mill & Lumber Co.), Tom Hoshall and Larry Hall.

**REMONUMENTED NOTES:** Previously monumented positions as per my 1979 survey (M78-79) were shifted as follows: (3) S73°25'W 4.15'; (4) N2°53'45"E 0.56'; (5) N54°50'W 0.38' (these positions were corrected based on monumentation error found by James W. Prochnau, L.S. 1305 and not due to the recovered position of the original south quarter corner by Don Peel as noted above); (9) N61°40'44"W 33.52'; (10) N62°52'05"W 33.14'; (11) N61°39'48"W 44.01'; (12) N62°34'14"W 43.64'; (13) N31°42'20"W 21.01'; (14) N40°24'46"W 23.25'; (15) N34°01'08"W 72.80' (see accepted position in corner notes); (16) N61°40'10"W 88.03'; (18) N61°40'22"W 81.78' to monumentation by R. J. Hintz; (19) N61°40'14"W 120.55'.

- LEGEND**
- MONUMENTS FOUND (SEE CORNER NOTES FOR TYPE AND MARKINGS)
  - MONUMENT SET: 5/8" X 30" IRON RODS WITH 1" PLASTIC I.D. CAP MKD: "STUNTZNER ENGINEERING" (NOTE: SEE MONUMENTATION NOTES FOR AMENDED SHIFTS)
  - CALCULATED POSITIONS ONLY, NO MONUMENT SET
- BASIS OF BEARING:** COUNTY SURVEY BY JAMES W. BYRON, DATED FEBRUARY-JUNE 1971, C.S. M42-27 (LOCATION NOTED HEREON)
- (—) RECORD MEASURE BY DON PEEL, MARCH 30, 1982 M 91-63
  - (—) RECORD MEASURE BY R.J. HINTZ, MAY 1982 AND DECEMBER 1982, AND M93-47 M92-12
  - { } MEASURE BY JACKSON AND PROCHNAU, 1983 SURVEY
  - [ ] ORIGINAL G.L.O. MEASURE (BASIS OF PROPORTIONATE CONTROL)
- DATE:** APRIL 1984  
**SCALE:** 1" = 500'

REGISTERED PROFESSIONAL SURVEYOR  
*Ronald E. Stuntzner*  
OREGON SURVEYORS  
RONALD E. STUNTZNER  
1982

MAP FILE M.92-16

MAP FILE M.92-16