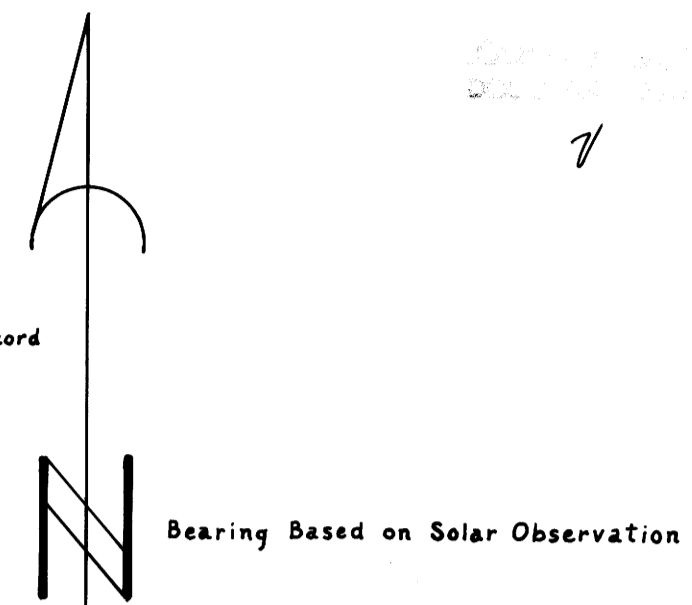
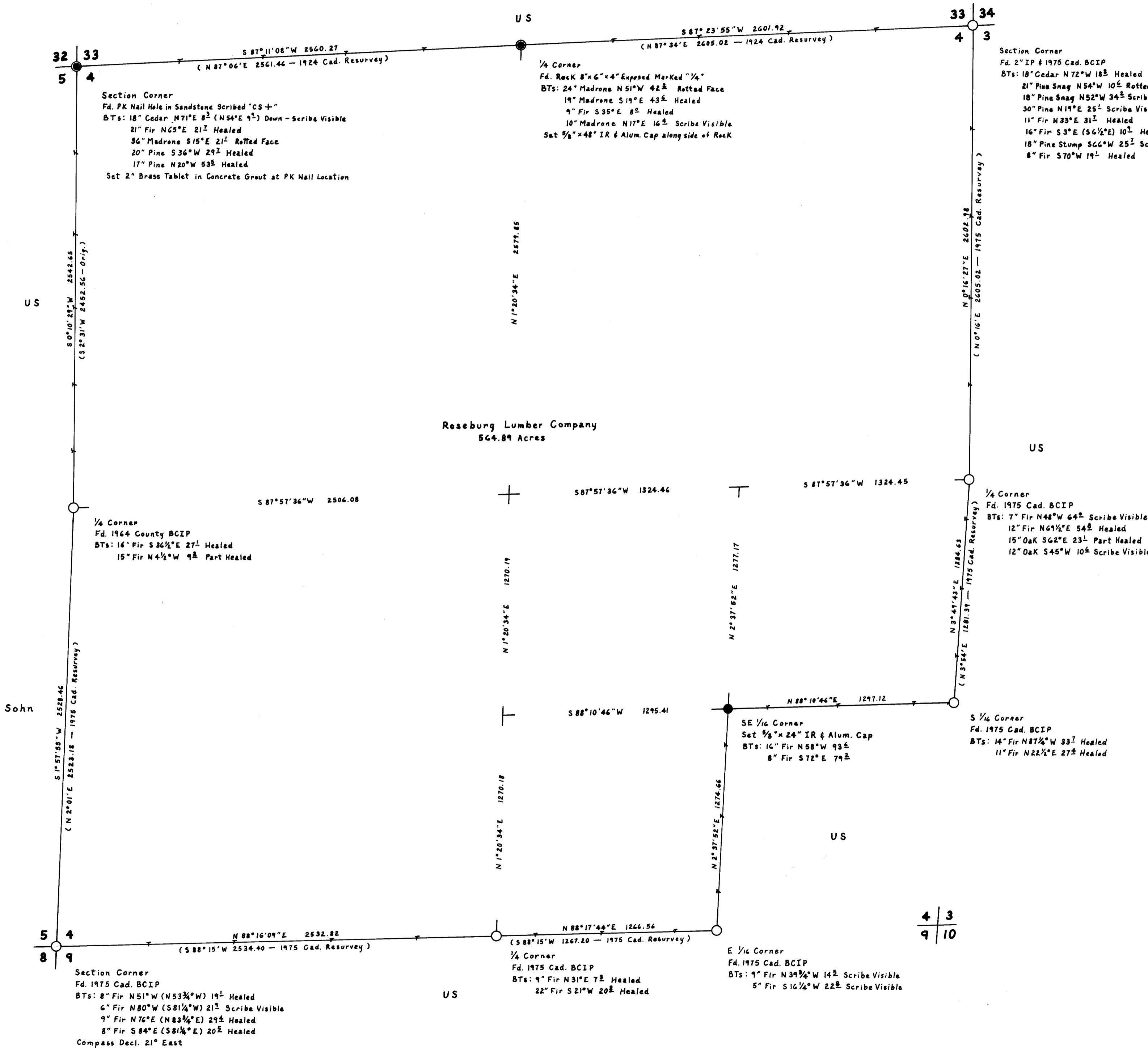


Resurvey and Subdivision of Section 4, T30S, R7W, W.M., Oregon

For Roseburg Lumber Company

June 29, 1984

Scale: 1" = 400'



Legend

- Monument Found
- Set 5/8" IR & Alum. Cap Marked "LS 498"
- Remonumented as Noted Marked "LS 498"
- Property Line
- Line Referenced to Alum. Tags
- () Record Data

I ran a closed traverse in Section 4 using a Jena I second theodolite and a Mac I E EDM. I achieved a precision of 1:16,470 and adjusted the traverse by the Crandall method. I set the corners by standard subdivision procedure based on the location of the existing monuments.
Howard W. Johnstone P.O. Box 1088 Roseburg, Oregon

REGISTERED
PROFESSIONAL
LAND SURVEYOR

Howard W. Johnstone

OREGON
MAY 13, 1980
HOWARD W. JOHNSTONE
498

4/3
9/10

M97-14