

SURVEY IN THE NW 1/4 SECTION 25,
T27S, R6W, W.M., DOUGLAS COUNTY,
OREGON, FOR THE CITY OF ROSELBURG.

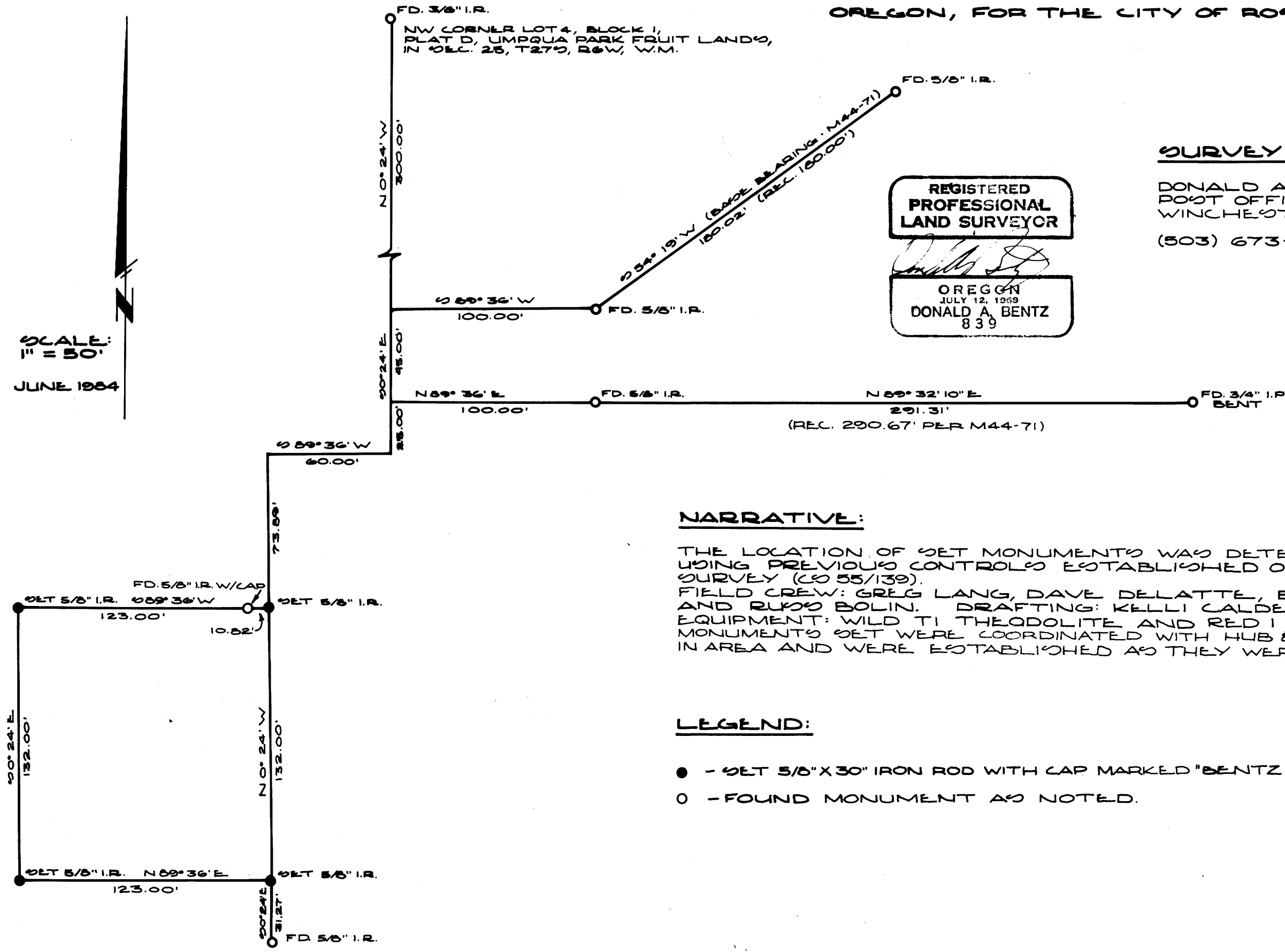
FILED
RECEIVED
JUL 10 1984
COUNTY SURVEYOR
DOUGLAS COUNTY, ORE.

SURVEY BY:
DONALD A. BENTZ, INC.
POST OFFICE BOX 901
WINCHESTER, OREGON 97495
(503) 673-0166

REGISTERED
PROFESSIONAL
LAND SURVEYOR

OREGON
JULY 12, 1958
DONALD A. BENTZ
839

SCALE:
1" = 50'
JUNE 1984



NARRATIVE:

THE LOCATION OF SET MONUMENTS WAS DETERMINED BY USING PREVIOUS CONTROLS ESTABLISHED ON A PRIOR SURVEY (CO 55/139).
FIELD CREW: GREG LANG, DAVE DELATTE, BOB DANOKIN, AND RUDY BOLIN. DRAFTING: KELLI CALDERWOOD.
EQUIPMENT: WILD T1 THEODOLITE AND RED 1 DISTANCE METER.
MONUMENTS SET WERE COORDINATED WITH HUB & TACKS (CONTROL) IN AREA AND WERE ESTABLISHED AS THEY WERE IN 1970.

LEGEND:

- - SET 5/8" X 30" IRON ROD WITH CAP MARKED "BENTZ SURVEY, INC."
- - FOUND MONUMENT AS NOTED.

MAP FILE M 97-12

MAP FILE M 97-12