

SURVEY FOR DEED DESCRIPTIONS IN A PORTION OF LOTS 1 AND 2, BLOCK 3, PLAT K, SUTHERLIN LAND AND WATER CO., IN THE S.E. 1/4, SECTION 13, T.25 S., R.5 W., U.M., DOUGLAS COUNTY, OREGON

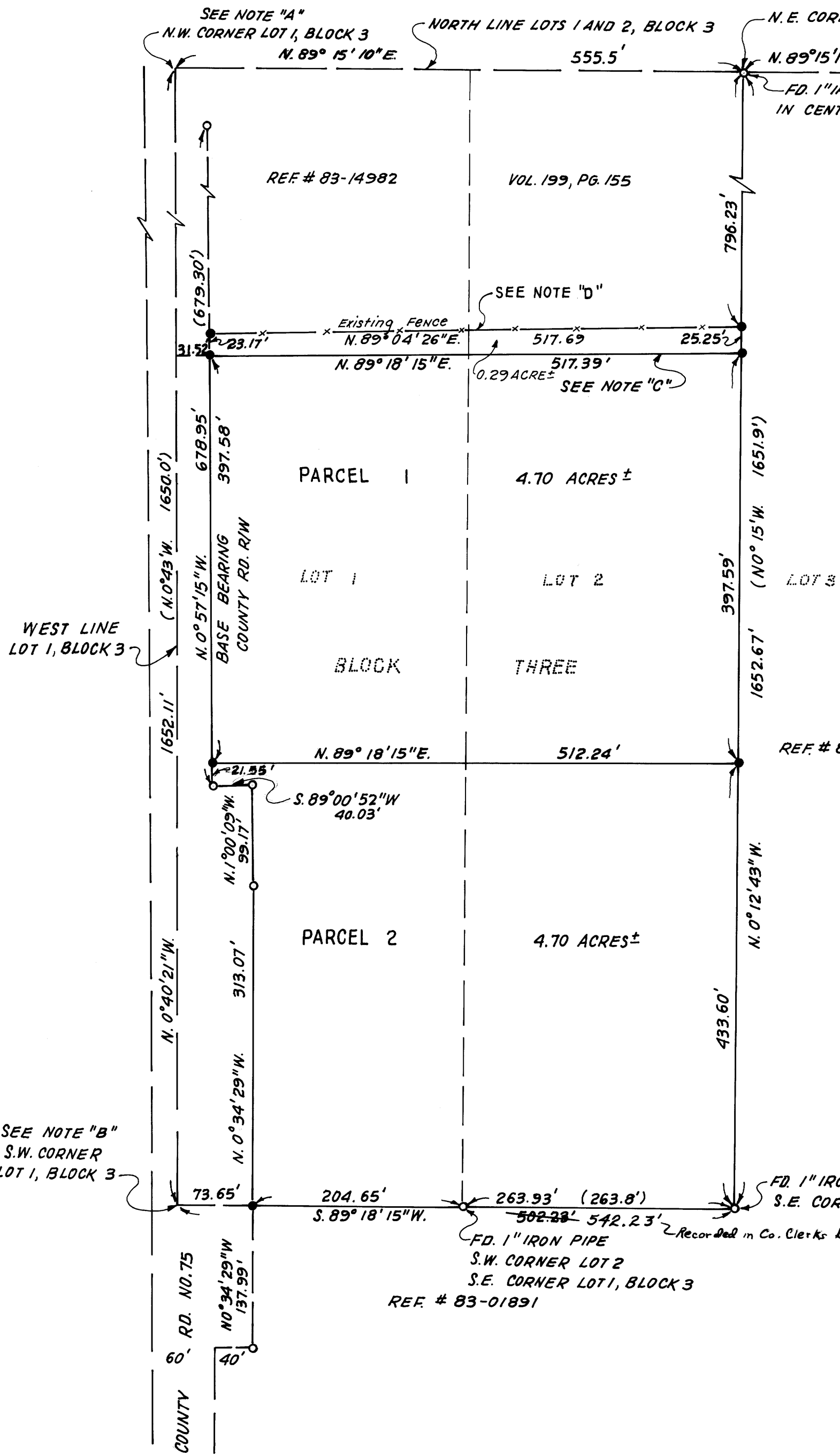
FOR: WILLIAM F. AND ROSALIE COFFEY
RTE. 1, BOX 6275
SUTHERLIN, OREGON, 97479
BY: ROBERT L. DOLAN
RTE. 1, BOX 1820
SUTHERLIN, OREGON, 97479

DATE: MAY, 1984
SCALE: 1" = 100'

COUNTY SURVEYORS FILE DATA
DO NOT REMOVE FROM OFFICE

Legend:
● = SET 5/8" X 30" IRON ROD W/CAP (LS 1076)
○ = FOUND 3/4" IRON ROD OR AS NOTED

BS
1/2



NARRATIVE: SURVEY TO MONUMENT CORNERS AND FOR DEED DESCRIPTIONS.

NOTE "A" N.W. CORNER LOT 1, BLOCK 3, COMPUTED AT RECORD DISTANCE FROM FOUND N.E. CORNER LOT 2 (PLAT K)

NOTE "B" S.W. CORNER LOT 1, BLOCK 3, COMPUTED AT RECORD DISTANCE FROM FOUND S.E. CORNER LOT 1, BLOCK 3 (PLAT K)
ALL OF ORIGINAL LOT 1 AND 2 COMPUTED TO DETERMINE THE SOUTH HALF OF LOTS 1 AND 2 AS PER DEED NO. 83-15613

NOTE "C" NORTH LINE OF THE SOUTH HALF OF ORIGINAL LOTS 1 AND 2.

NOTE "D" THIS LINE MONUMENTED FOR POSSIBLE PROPERTY LINE AGREEMENT TO ESTABLISH IT AS THE TRUE PROPERTY LINE.

Recorded in Co. Clerk's Bk. 884 Pg. 83 - 6/13/84
S.W. CORNER LOT 2
S.E. CORNER LOT 1, BLOCK 3
REF # 83-01891

REGISTERED
PROFESSIONAL
LAND SURVEYOR
ROBERT L. DOLAN
JULY 30, 1976

