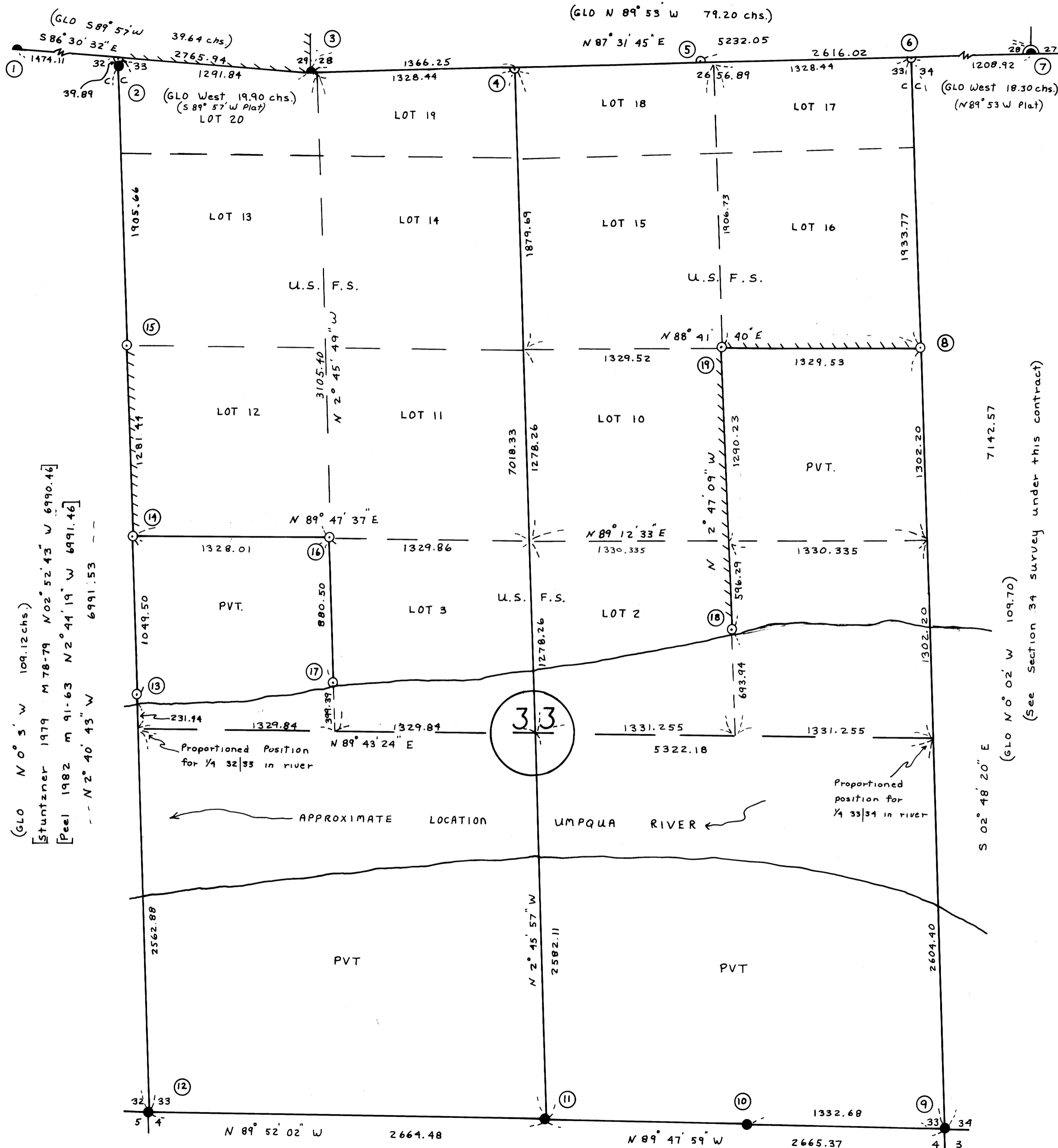
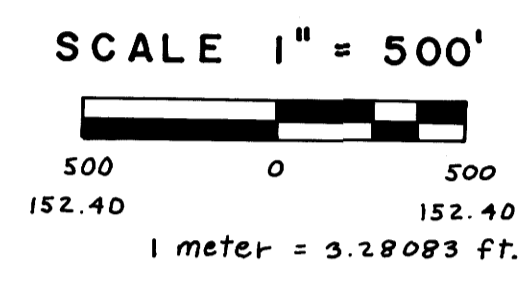
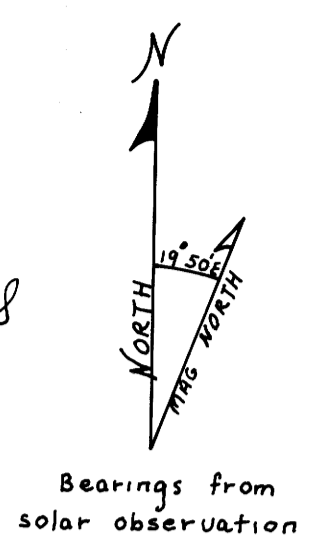


(See Section 28 survey under this contract)



SURVEY FOR
U.S. FOREST SERVICE
 SMITH-UMP CADASTRAL
 CONTRACT NO. 53-04T0-3-0935N
 SECTION 33, T21S, R11W, W. M.
 DOUGLAS COUNTY, OREGON



FEBRUARY 24, 1984

- LEGEND**
- Corner evidence found
 - ⊙ Corner evidence found from adjacent survey under this contract.
 - Corner set by survey
 - ▬▬▬ Property line posted with 6' fiberglass posts with F.S. decals 54-2a or 1/2"x5" rebar with F.S. signs 54-2.
 - [] Bearings and distances of record by other surveys.
 - () Bearings and distances of record from original GLO survey.

Narrative: This survey is a closed traverse by T-16 theodolite with DI-4 EDM and T-1 theodolite with Citation 460 EDM, made by Jackson & Prochnau, Inc., P.O. Box 177, Albany, Oregon 97321. The South boundary of the township, the meanders of the Umpqua River and subdivision of portions of the township along the river was originally done by W.H. Gyars in 1879. William Thiel subdivided portions of the township North of the river in 1891. The Southwest corner of Section 28, corner No. 3, as monumented by Stuntzner M 78-79, was accepted by our survey as the original section corner established in 1891. Acceptance is based on the 36" Cedar bearing tree and supporting topographic calls to the West. The Cedar is the correct age and size (12" per GLO notes) and was opened up in the 1950's. No scribing can be found due to heart rot. The position for the corner, as determined from the Cedar, falls 63 ft. East of a creek bearing Southwesterly, which fits with the original call of 1.00 chains. The calls further West fit very good. The position for the corner was accepted by Hintz M 70-10, and Hootman M 15-23. The closing corner 32|33 was monumented on line between corner 1 and corner 3. Corner Nos. 4, 5, 6 and 13 were set by single proportion measure following a thorough search of the respective areas. In order to subdivide the section, proportioned positions for the East and West 1/4 corners were computed. Both corners fall in the river and were not originally set. The N 1/16 32|33, No. 14 and 1/16 80 32|33, 15, were previously monumented by Stuntzner, M 78-79, in 1979. Stuntzner's positions per his survey, for the N 1/16 32|33 bears S 3° 05' 39" W 0.56 ft., and for the 1/16 80 32|33 brs N 73° 37' 06" 4.15 ft., from the proportioned positions monumented by our survey. Stuntzner removed his monuments during the course of our survey.

REGISTERED
 PROFESSIONAL
 LAND SURVEYOR

James W. Prochnau

OREGON
 SEPTEMBER 21, 1977
 JAMES W. PROCHNAU
 1305

I, James W. Prochnau, a registered Land Surveyor in the State of Oregon, hereby certify that this plat and the notes hereon, or attached, are a correct representation of a survey I performed during October 1983 through February 1984 for the U.S. Forest Service in accordance with the statutes of the State of Oregon and with the articles of my contract.

James W. Prochnau
 James W. Prochnau
 PLS 1305 Oregon

[Byron 1971 m 42-27 N 89° 57' 15" E 5329.39]
 (GLO West 80.00 chs.)

[Jackson & Prochnau 1978 CS 58/186 N 89° 57' 15" 2664.69]

(GLO N 0° 5' W 109.12 chs.)
 [Stuntzner 1979 M 78-79 N 02° 52' 43" W 6990.46]
 [Peel 1982 m 91-63 N 2° 44' 19" W 6991.46]
 N 2° 40' 43" W 6991.53

5/8/294
 M 96-64 A

5/8/294
 M 96-64 A