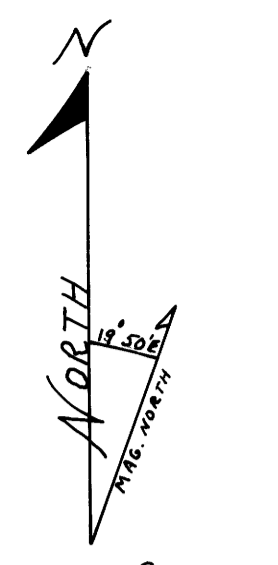


SURVEY FOR  
**U. S. FOREST SERVICE**  
SMITH - UMP CADASTRAL  
CONTRACT NO. 53-04TO-3-0935N  
SECTION 27, T21S, R11W, W. M.  
DOUGLAS COUNTY, OREGON



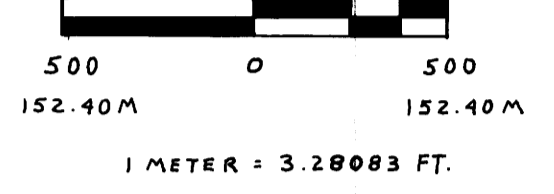
Bearings from  
Solar observation

**LEGEND**

- Corner evidence found
- ⊙ Corner evidence found from adjacent survey under this contract.
- Corner set by survey
- //// Property line posted with 6 ft. fiberglass posts with F.S. decals 54-2a or 1/2" x 5' rebar with F.S. signs 54-2.
- [ ] Bearings and distances of record by other surveys.
- ( ) Bearings and distances of record from original survey

SCALE 1" = 500'

FEBRUARY 24, 1984

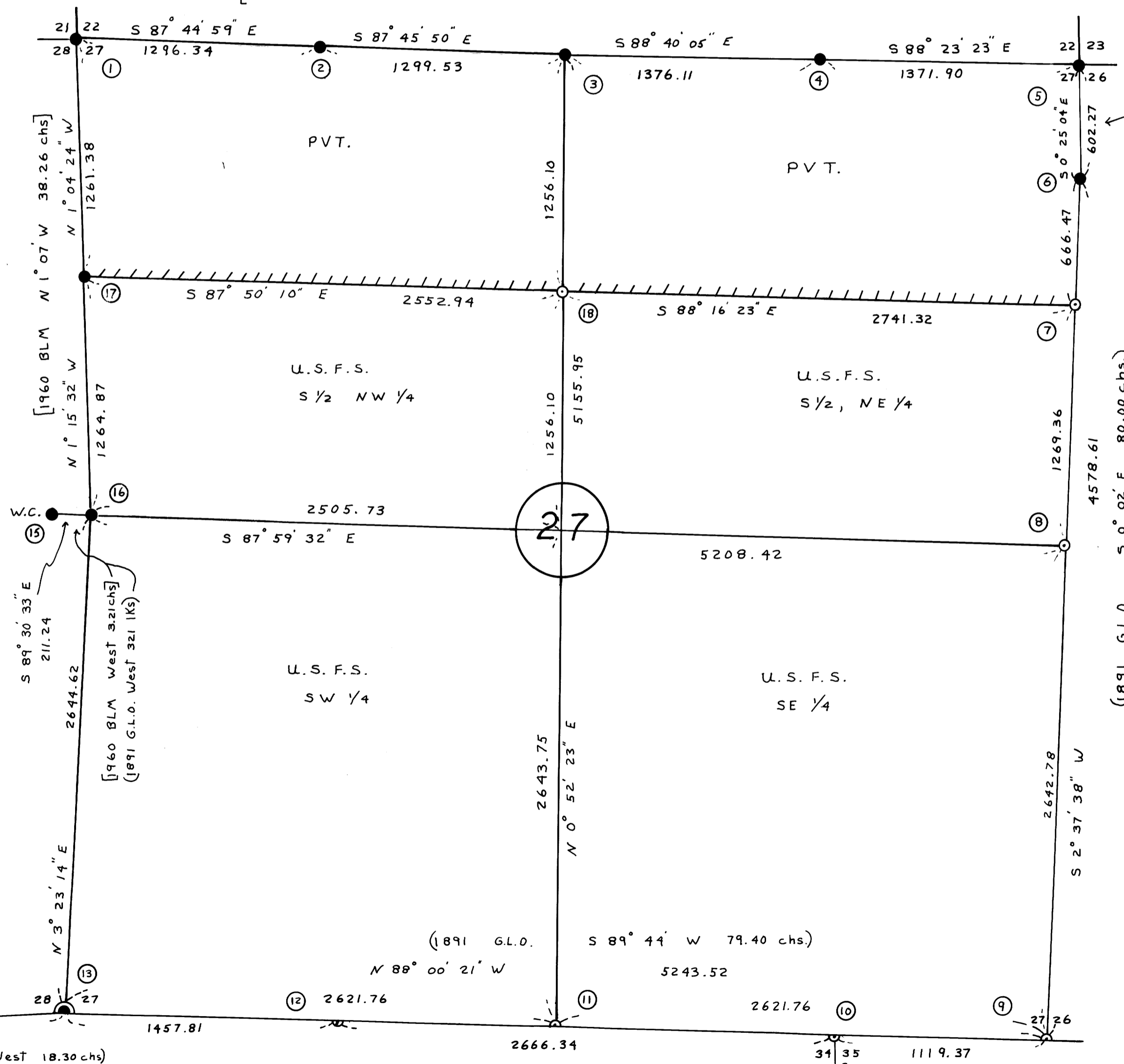


500 0 500  
152.40M 152.40M

1 METER = 3.28083 FT.

(1891 G.L.O. N 89° 56' W 79.90 chs.)

[1960 BLM N 87° 38' W 39.44 chs. N 88° 34' W 41.64 chs.]



[1960 BLM S 0° 01' E 9.21 chs.]  
(1891 G.L.O. 10.70 chs.)

**NARRATIVE:** This survey is a closed traverse by T-16 theodolite and DI-4 EDM, and T1-A theodolite and Citation 450 EDM, made by Jackson & Prochnau, Inc., P.O. Box 177, Albany, Oregon, 97321. The original subdivisions in this portion of the township were done by William Thiel in 1891. The Southeast corner of Section 27, corner ④ was set at the record latitude from the witness point, corner ⑥ and at record departure from the Southwest corner, ③, as recommended by the BLM. The N 1/16 27/26, corner ⑦ was set at the mid-point in latitude between the NE corner, ⑤, and the 1/4 27/26, corner ⑧, on line between ⑥ and ⑧. Corner numbers ⑧ ⑩ ⑪ and ⑫ were set by single proportion measure.

I, James W. Prochnau, a registered land surveyor in the State of Oregon, hereby certify that this plat and the notes hereon, or attached, are a correct representation of a survey I performed during October 1983 through February 1984 for the U.S. Forest Service in accordance with the statutes of the State of Oregon and with the articles of my contract.

*James W. Prochnau*  
James W. Prochnau  
PLS 1305, Oregon

REGISTERED  
PROFESSIONAL  
LAND SURVEYOR

*James W. Prochnau*  
OREGON  
SEPTEMBER 21, 1977  
JAMES W. PROCHNAU  
1305

BS  
/S

BS

58 / 294  
M96-61A

M96-61A  
58 / 294

(1891 G.L.O. West 18.30 chs)  
(N 89° 53' W Plat)

(See Section 34 survey under this contract)

(1891 G.L.O. West 16.95 chs.)  
(S 89° 44' W Plat)