

COUNTY RECORDERS FILE DATA  
 THE LAND RECORDS DIVISION OFFICE

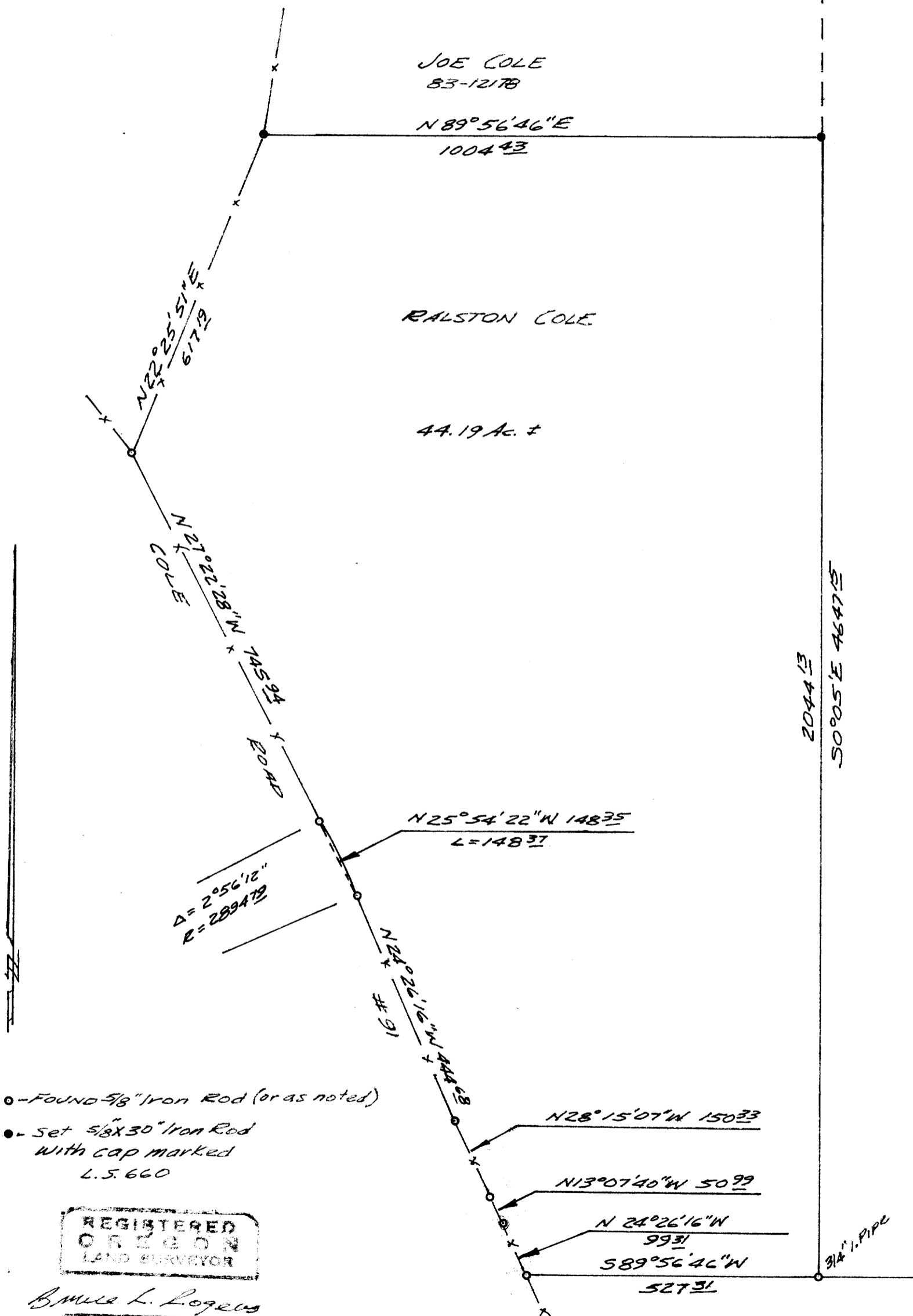
FILED BS  
 RECEIVED BS

MAY 30 1984

SURVEY TO SET PROPERTY CORNERS  
 IN SECTION 9, T. 25 S., R. 6 W. N.M.  
 SURVEYED FOR JOE COLE  
 BY BRUCE ROGERS — 2737 N.W. CALKINS — Astoria, OR 97140  
 APRIL, 1984 1"=200'

COUNTY SURVEYOR  
 DOUGLAS COUNTY, ORE.  
 Astoria, OR 97140 BS

1/4 COR. COP  
 Fd. 8x COP  
 COP. 7x  
 from M56-19  
 N 58° 23' 22" E  
 697.49



**NARRATIVE**  
 Purpose of this survey was to run the line between Ralston Cole & Joe Cole as described in Recorder's # 83-12178.  
 We tied the found monuments shown with theodolite, E.D.M. & Transit & chain traverse. The line was flagged and the new monuments set. All bearings & distances except the north and east lines are record from M56-19.

- - Found 5/8" Iron Rod (or as noted)
- - Set 5/8x30" Iron Rod with cap marked L.S. 660

REGISTERED  
 OREGON  
 LAND SURVEYOR  
 BRUCE L. ROGERS  
 JULY 10, 1974  
 BRUCE P. ROGERS  
 660

MAP FILE M 96-59

MAP FILE M 96-59