

COUNTY SURVEYORS FILE DATA  
DO NOT REMOVE FROM OFFICE

# SURVEY TO SET PROPERTY CORNERS

E 1/2 W 1/2 SECTION 15, T. 27 S. R. 7 W. W. M.

FOR: RICHARD KILDUFF

BY: A A SURVEYING SERVICE, INC.

P.O. BOX 130, ROSEBURG, OREGON 97470

MAY 1984 — SCALE: 1" = 500'

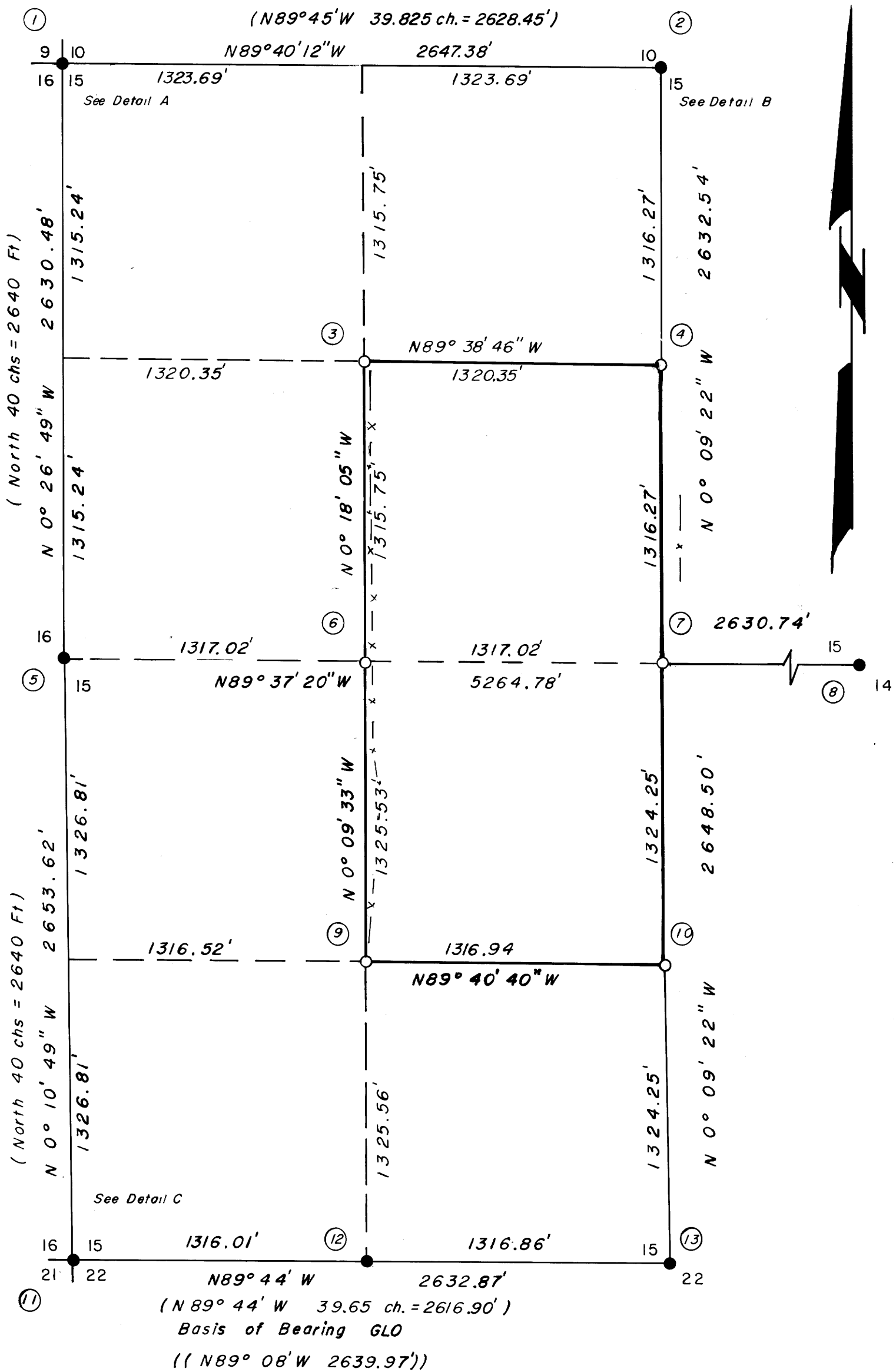
BS  
BS  
BS

M 96-55  
58/204 (w)

## LEGEND

- Found as Noted
- Set as Noted
- (—) Record Data Per G.L.O. Plat 1881
- (- - -) 1954 B. Irving Survey, M 9-36
- x—x—x Fence

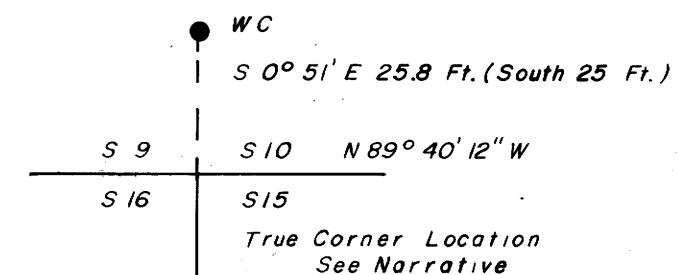
See Attached Narrative



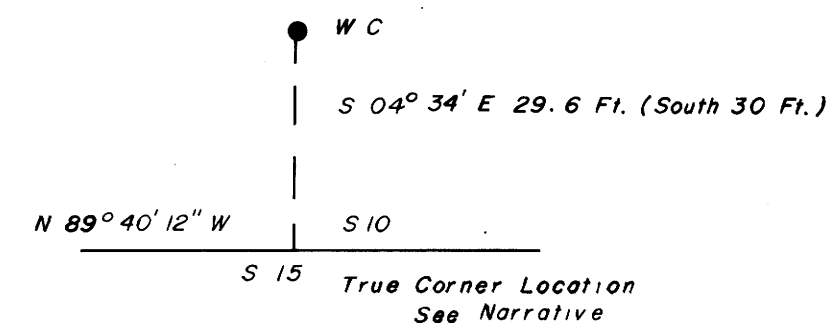
- ① W.C. to NW Corner Section 15  
Found a 1-1/2" iron pipe with 2-1/2" brass cap set by Douglas County Surveyor's Office 1969  
BT's Found  
24" W Oak N36°45'E, 32.6 Ft. (N41°30'E, 33.3 Ft.) partial scribe "WCO"  
22" D Fir stump N70°45'W 69.0 Ft. (N71°W 69.7 Ft.) partial healed blaze  
23" D Fir S52°15'E 140.0 Ft. (S53°E 140.8 Ft.) healed blaze  
T 27 S R 7 W  
W C  
9 10  
16 15  
25 FT SOUTH  
TO CORNER  
1969
- ② W.C. to N 1/4 Section 15  
Found 1-1/2" iron pipe with 2-1/2" brass cap set by Douglas County Surveyor's Office 1960  
BT's Found  
26" W Oak N22°45'E 10.2 Ft. (N20°E 10.0 Ft.) good scar  
33" W Oak S25°15'E 111.5 Ft. open face no visible scribe  
T 27 S R 7 W  
W 1/4 COR.  
S 15  
30 SOUTH  
TO 1/4 COR  
1960
- ③ NW 1/16 Section 15  
Set 1-1/2" X 30" iron pipe with 2-1/2" brass cap  
BT's Set  
12" Oak S48°W 68.4 Ft. Scribed NW 1/16 S15 BT  
10" D Fir N65°W 36.8 Ft. Scribed NW 1/16 S15 BT  
T 27 S R 7 W  
NW 1/16  
S 15  
RLS 1654  
1984
- ④ CN 1/16 Section 15  
Set 1-1/2" X 30" iron pipe with 2-1/2" brass cap  
BT's Set  
9" D Fir N26°W 15.9 Ft. Scribed CN 1/16 BT  
12" D Fir S62°E 33.2 Ft. Scribed CN 1/16 BT  
T 27 S R 7 W  
CN 1/16  
S 15  
RLS 1654  
1984
- ⑤ 1/4 Corner to Section 16 & 15  
Found 1-1/2" iron pipe with 2-1/2" brass cap  
BT's Found  
20" B Oak N23°30'W 373.5 Ft. (N23°W 372.4 Ft.) good scar  
32" B Oak N03°45'E 366.8 Ft. (N 0°15'E 471.2 Ft.) good scar  
24" W Oak N49°30'E 457.3 Ft. (N50°E 456.8 Ft.) good scar  
T 27 S  
1/4 S16 S15  
R 7 W  
1970
- ⑥ CW 1/16 Section 15  
Set 1-1/2" X 30" iron pipe with 2-1/2" brass cap  
BT's Set  
14" D Fir S04°W 27.9 Ft. Scribed CW 1/16 BT  
13" D Fir East 83.6 Ft. Scribed CW 1/16 BT  
T 27 S R 7 W  
CW 1/16 S15  
RLS 1654  
1984
- ⑦ W.C. to C 1/4 Section 15  
Set 1-1/2" X 30" iron pipe with 2-1/2" brass cap  
BT's Set  
14" D Fir S62°W 32.4 Ft. Scribed C 1/4 BT  
16" D Fir S63°E 15.5 Ft. Scribed C 1/4 BT  
W C C 1/4  
T 27 S R 7 W  
S 15  
N 40 FT  
RLS 1654  
1984
- ⑧ 1/4 Corner to Section 15 & 14  
Found 1-1/2" iron pipe with 2-1/2" brass cap  
BT's Found  
9" D Fir N68°30'E 21.9 Ft. healed blaze  
12" D Fir S45°W 18.0 Ft. healed blaze  
12" B Oak N78°W 7.3 Ft. rotted face  
18" Oak stump hole S25°E 58.1 Ft. stump turned and rotted  
T 27 S R 7 W  
1/4 S15 S14  
1960
- ⑨ SW 1/16 Section 15  
Set 1-1/2" X 30" iron pipe with 2-1/2" brass cap  
BT's Set  
14" D Fir S59°W 44.0 Ft. Scribed SW 1/16 BT  
19" B Oak N30°E 23.6 Ft. Scribed SW 1/16 BT  
T 27 S R 7 W  
SW 1/16  
S 15  
RLS 1654  
1984

- ⑩ CS 1/16 Section 15  
Set 1-1/2" X 30" iron pipe with 2-1/2" brass cap  
BT's Set  
10" D Fir N83°W 43.7 Ft. Scribed CS 1/16 BT  
8" Madrone S36°W 26.3 Ft. Bark scribed CS 1/16 BT  
T 27 S R 7 W  
CS 1/16  
S 15  
RLS 1654  
1984
- ⑪ W.C. to SW Corner Section 15  
Found 1-1/2" iron pipe with 2-1/2" brass cap set by Douglas County Surveyor 1954  
BT's Found  
14" W Oak N 45° E 115.4 Ft. visible scribe '7 W'  
8" W Oak N 5° 45' W 14.6 Ft. (N 4° W) healed blaze  
14" D Fir S 16° 30' W 20.2 Ft. (S 14° 30' W) healed blaze  
11" W Oak N 0° 30' E 79.7 Ft. healed blaze  
T 27 S R 7 W  
W C  
S 16 S 15  
S 21 S 22  
32' TO EAST  
1954
- ⑫ W 1/16 between Sections 15 & 22  
Found 5/8" iron rod set by B.B. Irving 1954  
BT Found  
16" W Oak N 60° E 165.2 Ft. (N 60° 30' E 195.8 Ft.) scribing visible  
T 27 S  
S 15
- ⑬ 1/4 Corner Sections 15 & 22  
Found 1-1/2" iron pipe with 2-1/2" brass cap set by Douglas County Surveyor 1954  
BT's Found  
10" Fir stump S 47° W 20.9 Ft. visible scribe  
14" Laurel N 3° W 29.8 Ft. visible scribe  
18" B Oak S 23° W 48.1 Ft. visible scribe  
T 27 S  
S 15  
R 7 W  
1954

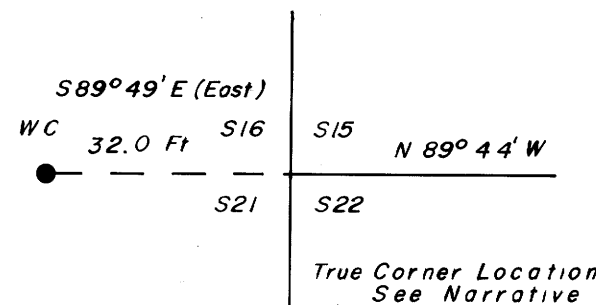
DETAIL "A" NO SCALE



DETAIL "B" NO SCALE



DETAIL "C" NO SCALE



REGISTERED  
PROFESSIONAL  
LAND SURVEYOR

Ronald A. Quimby  
OREGON  
JULY 14, 1978  
RONALD A. QUIMBY  
1654

M 96-55

FILED *BS*  
RECEIVED *BS*

MAY 16 1984

NARRATIVE OF SURVEY  
FOR: RICHARD KILDUFF  
BY: AA SURVEYING SERVICE, INC.  
P.O. BOX 130  
ROSEBURG, OREGON  
MAY 1984

COUNTY SURVEYOR  
DOUGLAS COUNTY, ORE.

LOCATION: Part of the E $\frac{1}{2}$ W $\frac{1}{2}$  Section 15 Township 27 South, Range 7  
West W.M. Douglas County, Oregon.

PURPOSE: To monument and mark boundary lines of that land described  
in Book 794, page 846, Douglas County Deed Records.

PROCEDURE: I found all existing corner evidence and monuments as shown on  
my map. Certain corners fall in the county road and have  
been perpetuated by the county surveyor's office with witness  
corners. The following is a description of the evidence which  
I used to determine the true position for these corners.

No. 1 NW Corner of Section 15

An Original 15" W. Oak, now 24" , N. 20° 11' E., 55.4 Ft.  
dist. (N.20°E., 55.4 Ft. Dist.) with visible scribe  
"W C O"

A 15" D. Fir, now 23", S. 61° 33' E., 125.5 Ft. dist.  
(S. 61° E., 125.5 Ft. dist.) with healed blaze (CS Ren. 81)

No. 2 1/4 Corner to Sections 10 and 15

An Original 16" W. Oak, now 26", N.02° 18' E., 38.9 Ft. dist.  
(N. 6° E., 38.9 Ft. dist.)with well healed blaze.

An Original 24" W. Oak, now 33", S. 32° 13' E., 84.5 Ft. dist.  
(S. 32° E., 84.5 Ft. dist.) with well healed blaze.

No. 11 SW Corner of Section 15

A 10" B. Oak, now 11" W. Oak, N. 21° 29' W., 85.8 Ft. dist.  
(N.17° 30' W., 85.8 Ft. dist.) with healed blaze.  
(CS Ren. 54)

A 1½" iron pipe with 2½" brass cap set by Douglas County  
Surveyor in 1954 N.89° 49' W., 32.0 Ft. dist. ( West,  
32.0 Ft. dist.) marked "County Surveyor's Office

T 27 S R 7 W  
W.C.

S16 | S15  
S21 | S22

32' to East  
1954

I used a random close traverse method to tie all existing  
corners and along the perimeter of the subject property.

M 96-55

NARRATIVE OF SURVEY  
FOR: RICHARD KILDUFF  
BY: AA SURVEYING SERVICE, INC.  
CONT.

FILED  
RECEIVED *BS*

MAY 16 1984

COUNTY SURVEYOR  
DOUGLAS COUNTY, ORE.

I subdivided Section 15 per the BLM 1973 Manual of Surveying Instruction. I monumented the corners of the subject property as shown, and flagged the lines.

EQUIPMENT: Topcon GTS-10

PERSONNEL: Ron Quimby, PLS  
Karen Reed  
Gene Bloom, PLS  
Dave Stringer, PLS  
Darrel Jones  
Dave Orlandi  
Ron Gilbert

