

COUNTY SURVEYORS FILE DATA  
DO NOT REMOVE FROM OFFICE

FILED *BS*  
RECEIVED *SL*  
APR 19 1984

COUNTY SURVEYOR  
DOUGLAS COUNTY, ORE. *BS*

**SURVEY OF  
SOUTH LINE & S 1/2 WEST LINE  
SECTION 32, T19S, R7W, W.M.  
LANE COUNTY, OREGON**

FOR  
**INTERNATIONAL PAPER CO.**  
BY  
**PEEL BAKER LAND SURVEYING**  
MARCH 1, 1984

**NARRATIVE**

THIS SURVEY WAS MADE IN FEBRUARY AND MARCH, 1984 BY DANIEL W. BAKER OF PEEL BAKER LAND SURVEYING INC., 1262 LAWRENCE ST., EUGENE, OREGON. THE PURPOSE OF THIS SURVEY WAS TO LOCATE AND MARK THE SOUTH LINE AND THE SOUTH HALF OF THE WEST LINE OF SECTION 32, T19S, R7W, W.M. FOR INTERNATIONAL PAPER COMPANY. A KERN K15 THEODOLITE AND DM 502 E.D.M. WERE USED TO PERFORM THIS SURVEY. A RANDOM TRANSIT TRAVERSE, WITH A MINIMUM ERROR OF CLOSURE OF 1/7900', WAS RUN BETWEEN FOUND CORNERS. BEARINGS WERE BASED ON A SOLAR OBSERVATION. OFFSETS FROM THE RANDOM TRAVERSE TO THE TRUE PROPERTY LINE WERE CALCULATED AND USED TO DETERMINE THE POSITION OF THE TRUE LINE. THE TRUE PROPERTY LINE WAS MARKED IN THE FIELD BY BLAZING (BLAZES PAINTED RED) ON BOTH SIDES OF TRUE LINE AND BY 1/2" X 60" REBAR SET AT RANDOM INTERVALS APPROXIMATELY ON TRUE LINE. EACH REBAR WAS REFERENCED BY SWING TIES TO NEARBY TREES MARKED WITH ALUMINUM TAGS SHOWING THE BEARING AND DISTANCE TO THE REBAR. A 4" X 8" YELLOW SIGN MARKED "PROPERTY LINE INTERNATIONAL PAPER CO. GARDINER, OREGON" IS ATTACHED TO EACH REBAR. EACH SIGN IS STAMPED SHOWING THE POINT NUMBER, SURVEYOR REGISTRATION NUMBER, AND THE DISTANCE (TO THE NEAREST FOOT) AND DIRECTION TO THE NEAREST CORNER MONUMENT. A MAGNETIC MARKER WAS BURIED APPROXIMATELY ONE FOOT DEEP AND 1/2 FOOT DISTANT FROM (ON LINE) EACH REBAR. NO CORNERS WERE SET DURING THIS SURVEY.

**1/4 CORNER 31 & 32**

FOUND: 1" IRON PIPE WITH G.L.O. BRASS CAP "1949"  
39" FIR, N60E, 19.2'  
50" FIR, S59W, 21.4'

**LOCATION OF 1/2" X 60" REBAR**

POINT NUMBER DISTANCE DIRECTION TO NEAREST CORNER

**STD. COR. 32 & 33**

BC-7	113'	EAST
BC-8	262'	EAST
BC-9	64'	WEST
CLOSING COR. 4 & 5		
BC-11	44'	EAST
BC-12	103'	EAST
BC-13	303'	EAST
BC-15	468'	EAST
BC-16	568'	EAST
BC-17	711'	EAST
BC-18	874'	EAST
BC-19	922'	EAST
BC-20	991'	WEST
BC-21	871'	WEST
BC-22	785'	WEST
BC-23	743'	WEST
BC-24	579'	WEST
BC-25	444'	WEST
BC-26	357'	WEST
BC-27	321'	WEST
BC-28	119'	WEST

**1/4 COR. SEC. 32 ONLY**

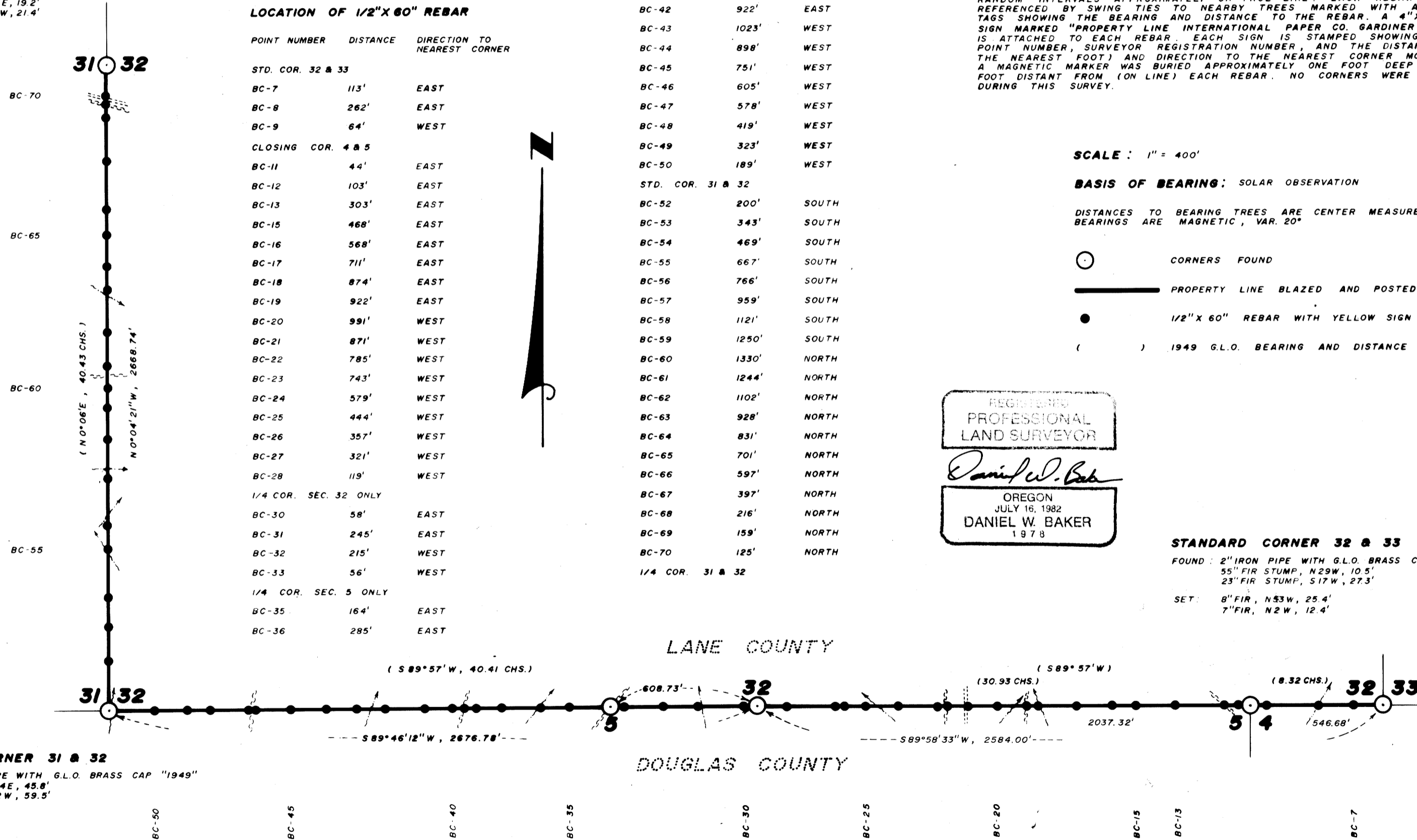
BC-30	58'	EAST
BC-31	245'	EAST
BC-32	215'	WEST
BC-33	56'	WEST

**1/4 COR. SEC. 5 ONLY**

BC-35	164'	EAST
BC-36	285'	EAST

POINT NUMBER DISTANCE DIRECTION TO NEAREST CORNER

BC-37	443'	EAST
BC-38	550'	EAST
BC-39	600'	EAST
BC-40	647'	EAST
BC-41	762'	EAST
BC-42	922'	EAST
BC-43	1023'	WEST
BC-44	898'	WEST
BC-45	751'	WEST
BC-46	605'	WEST
BC-47	578'	WEST
BC-48	419'	WEST
BC-49	323'	WEST
BC-50	189'	WEST
STD. COR. 31 & 32		
BC-52	200'	SOUTH
BC-53	343'	SOUTH
BC-54	469'	SOUTH
BC-55	667'	SOUTH
BC-56	766'	SOUTH
BC-57	959'	SOUTH
BC-58	1121'	SOUTH
BC-59	1250'	SOUTH
BC-60	1330'	NORTH
BC-61	1244'	NORTH
BC-62	1102'	NORTH
BC-63	928'	NORTH
BC-64	831'	NORTH
BC-65	701'	NORTH
BC-66	597'	NORTH
BC-67	397'	NORTH
BC-68	216'	NORTH
BC-69	159'	NORTH
BC-70	125'	NORTH
1/4 COR. 31 & 32		



**STANDARD CORNER 31 & 32**

FOUND: 2" IRON PIPE WITH G.L.O. BRASS CAP "1949"  
44" FIR, N84E, 45.8'  
29" FIR, N12W, 59.5'

**1/4 CORNER SEC. 5 ONLY**

FOUND: 2-1/2" IRON PIPE WITH B.L.M. BRASS CAP "1977"  
22" FIR, S72W, 20.8'  
17" FIR, S5E, 23.6'  
NOTE: THIS MONUMENT FALLS 0.26 FT. NORTH OF TRUE LINE

**1/4 CORNER SEC. 32 ONLY**

FOUND: 1" IRON PIPE WITH G.L.O. BRASS CAP "1949"  
39" FIR, N33W, 70' (ORIG. B.T.)  
67" FIR, S6E, 34.2' (ORIG. B.T.)  
37" FIR, N61E, 69.3' (1949 B.T.)

**CLOSING CORNER 4 & 5**

FOUND: 2-1/2" IRON PIPE WITH B.L.M. BRASS CAP "1977"  
9" FIR, S73W, 5.8' (RECORD-S62W, 10 LKS.)  
10" FIR, S25E, 9.3' (RECORD-S31-1/2E, 15 LKS.)  
NOTE: 1" IRON ROD BEARS NORTH, 1.44 FT.  
NOTE: THIS MONUMENT FALLS 0.34 FT. NORTH OF TRUE LINE

SCALE: 1" = 400'

BASIS OF BEARING: SOLAR OBSERVATION

DISTANCES TO BEARING TREES ARE CENTER MEASURE AND BEARINGS ARE MAGNETIC, VAR. 20°

- CORNERS FOUND
- PROPERTY LINE BLAZED AND POSTED
- 1/2" X 60" REBAR WITH YELLOW SIGN
- ( ) 1949 G.L.O. BEARING AND DISTANCE

REGISTERED  
PROFESSIONAL  
LAND SURVEYOR  
*Daniel W. Baker*  
OREGON  
JULY 16, 1982  
DANIEL W. BAKER  
1978

**STANDARD CORNER 32 & 33**

FOUND: 2" IRON PIPE WITH G.L.O. BRASS CAP "1949"  
55" FIR STUMP, N29W, 10.5'  
23" FIR STUMP, S17W, 27.3'  
SET: 8" FIR, N53W, 25.4'  
7" FIR, N2W, 12.4'

CS File 58-1289  
Map File M96-41

CS File 58-1289  
Map File M96-41