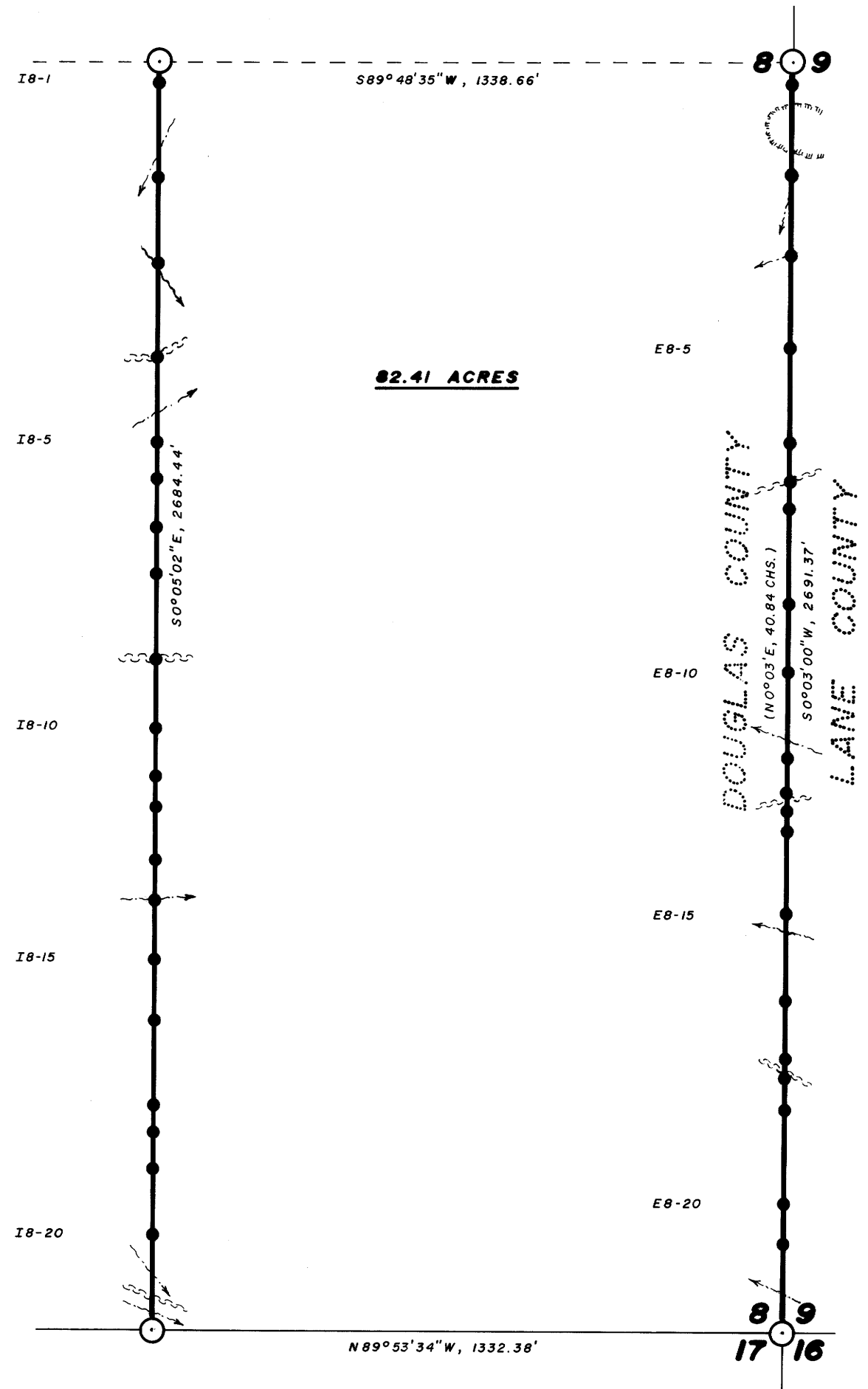


COUNTY SURVEYORS FILE DATA
DO NOT REMOVE FROM OFFICE

**SURVEY IN SE 1/4
SECTION 8, T19S, R8W, W.M.
DOUGLAS COUNTY, OREGON**
FOR
INTERNATIONAL PAPER COMPANY
BY
**PEEL BAKER LAND SURVEYING INC.
JANUARY 27, 1984**



LOCATION OF 1/2" X 60" REBAR

POINT NO.	DISTANCE	DIRECTION TO NEAREST CORNER
1/4 CORNER 8 & 9		
E8-2	45'	NORTH
E8-3	237'	NORTH
E8-4	407'	NORTH
E8-5	603'	NORTH
E8-6	803'	NORTH
E8-7	885'	NORTH
E8-8	943'	NORTH
E8-9	1142'	NORTH
E8-10	1288'	NORTH
E8-11	1219'	SOUTH
E8-12	1144'	SOUTH
E8-13	1105'	SOUTH
E8-14	1062'	SOUTH
E8-15	889'	SOUTH
E8-16	705'	SOUTH
E8-17	581'	SOUTH
E8-18	541'	SOUTH
E8-19	472'	SOUTH
E8-20	275'	SOUTH
E8-21	190'	SOUTH
SECTION CORNER 8,9,16,17		

CENTER - EAST 1/16 SECTION 8

I8-1	40'	NORTH
I8-2	239'	NORTH
I8-3	421'	NORTH
I8-4	621'	NORTH
I8-5	802'	NORTH
I8-6	881'	NORTH
I8-7	982'	NORTH
I8-8	1078'	NORTH
I8-9	1261'	NORTH
I8-10	1278'	SOUTH
I8-11	1176'	SOUTH
I8-12	1109'	SOUTH
I8-13	997'	SOUTH
I8-14	912'	SOUTH
I8-15	785'	SOUTH
I8-16	657'	SOUTH
I8-17	479'	SOUTH
I8-18	420'	SOUTH
I8-19	342'	SOUTH
I8-20	198'	SOUTH

EAST 1/16 SECTIONS 8 & 17

NARRATIVE

THIS SURVEY WAS MADE IN JANUARY, 1984 BY DANIEL W. BAKER OF PEEL BAKER LAND SURVEYING INC., 1262 LAWRENCE ST., EUGENE, OREGON. THE PURPOSE OF THIS SURVEY WAS TO LOCATE AND MARK THE SOUTH 1/2 OF THE EAST LINE AND THE NORTH-SOUTH CENTERLINE OF THE SOUTHEAST QUARTER OF SECTION 8, T19S, R8W, W.M., FOR INTERNATIONAL PAPER COMPANY. A KERN K15 THEODOLITE AND DM502 E.D.M. WERE USED TO PERFORM THIS SURVEY. A RANDOM TRANSIT TRAVERSE, WITH A MINIMUM ERROR OF CLOSURE OF 1/11,000, WAS RUN BETWEEN FOUND CORNERS. BEARINGS WERE BASED ON THE 1952 G.L.O. RESURVEY OF THE SOUTH 1/2 OF THE EAST LINE OF SECTION 8, T19S, R8W, W.M. OFFSETS FROM THE RANDOM TRAVERSE TO THE TRUE PROPERTY LINE WERE CALCULATED AND USED TO DETERMINE THE POSITION OF THE TRUE LINE. THE TRUE PROPERTY LINE WAS MARKED IN THE FIELD BY BLAZING TREES (BLAZES PAINTED RED) ON BOTH SIDES OF TRUE LINE AND BY 1/2" X 60" REBAR SET AT RANDOM INTERVALS APPROXIMATELY ON TRUE LINE. EACH REBAR WAS REFERENCED BY SWING TIES TO NEARBY TREES MARKED WITH ALUMINUM TAGS SHOWING THE BEARING AND DISTANCE TO THE REBAR. A 4" X 8" YELLOW SIGN MARKED "PROPERTY LINE INTERNATIONAL PAPER CO. GARDINER, OREGON" IS ATTACHED TO EACH REBAR. EACH SIGN IS STAMPED SHOWING THE POINT NUMBER, SURVEYOR REGISTRATION NUMBER, AND THE DISTANCE (TO NEAREST FOOT) NORTH OR SOUTH TO THE NEAREST CORNER MONUMENT. A MAGNETIC MARKER WAS BURIED APPROXIMATELY ONE FOOT DEEP AND 1/2 FOOT NORTH OF EACH REBAR. NO CORNERS WERE SET DURING THIS SURVEY.

SCALE: 1" = 300'

BASIS OF BEARING: 1952 G.L.O. RESURVEY, SOUTH 1/2 EAST LINE SECTION 8, T19S, R8W, W.M.

DISTANCES TO BEARING TREES ARE CENTER MEASURE

- CORNERS FOUND
- PROPERTY LINE BLAZED AND POSTED
- 1/2" X 60" REBAR WITH YELLOW SIGN
- () 1952 G.L.O. BEARING AND DISTANCE

CORNER DATA

SECTION CORNER 8,9,16,17

FOUND: 2" IRON PIPE WITH G.L.O. BRASS CAP "1952"
 12" FIR, N45E, 43.7' (1952 B.T.)
 60" FIR, N64E, 49.5' (ORIGINAL B.T.)
 48" FIR, S27E, 75.5' (ORIGINAL B.T.)
 20" FIR, S21E, 20.5' (1952 B.T.)
 16" FIR, S22W, 38.3' (1952 B.T.)
 42" FIR, S46W, 16.3' (ORIGINAL B.T.)
 16" FIR, N69W, 40.2' (1952 B.T.)
 52" FIR, N52W, 19.2' (ORIGINAL B.T.)

1/4 CORNER 8 & 9

FOUND: 1" IRON PIPE WITH G.L.O. BRASS CAP "1952"
 20" FIR, N56E, 25.2' (1952 B.T.)
 14" FIR, S70W, 6.6' (1952 B.T.)

C-E 1/16 CORNER SECTION 8

FOUND: 3/4" REBAR - SEE LANE CO. C.S. NO. 21553
 6" FIR, N87E, 19.9' (FACED BUT NOT SCRIBED)
 49" FIR, S18W, 30.3' (FACED BUT NOT SCRIBED)

EAST 1/16 CORNER SECTIONS 8 & 17

FOUND: 3/4" REBAR - SEE DOUGLAS CO. C.S. NO. M57-31
 43" FIR, S29E, 31.1' (RECORD, 31.6')
 87" FIR, S61-3/4W, 85.7' (RECORD, 90.3')

REGISTERED
PROFESSIONAL
LAND SURVEYOR

Daniel W. Baker

OREGON
JULY 19, 1982
DANIEL W. BAKER
1973

MAP FILE M 96-4
J. B. Baker No. 58/289(N)

J
AS
J
J. B. Baker No. 58/289(N)
M 96-4